

mrafee



*'The Christmas Sale'*

# Conditions

1. The highest approved bidder shall be the purchaser. The Auctioneer reserves the right to refuse any bid, and should any dispute arise between two or more bidders, the lot or lots in dispute shall be put up again, or not, and resold at the discretion of the Auctioneer, or the auctioneer may declare the purchaser. The Auctioneer reserves the right to bid on behalf of the vendor up to and including any reserve price placed on any lot and to alter, divide, group or withdraw any lot or lots either before or at any time during the sale.
2. The Auctioneer shall regulate the bidding and no bid shall be retracted.
3. Every purchaser shall give his name and place of abode, in default of which the Auctioneers shall have the power to resell at once, or afterwards as they may think fit.
4. Each bidder shall be supposed to have seen and to be thoroughly acquainted with the contents and conditions of the lot or lots on which he may bid, and no allowance whatsoever will be made for any faults, imperfections or errors of any description. The measurements and quantities described in the Catalogue are believed to be correct and must be taken as such. The purchaser being held to have satisfied himself as to measurements and quantities and other specifications in the Catalogue before bidding, neither will the Auctioneers or the Vendors be responsible for any lot or parts of any lot after the fall of the hammer, from which time all lots purchased are at the risk of the Purchaser.
5. The Auctioneers or the Vendors do not guarantee the measurements catalogued, or the correct description, genuineness or authenticity of any lot.
6. Each purchaser shall pay the whole amount of his purchase money (Auctioneer's Commission payable by purchaser) for all lots bought by him before any lot or lots can be removed and the whole amount due from each purchaser must be absolutely paid on each day of the sale and if not paid within such time, all moneys deposited in any part payment shall be absolutely forfeited and the Auctioneers will be at liberty to resell the lot or lots or any parts thereof remaining un-removed, by Public Sale or otherwise, without giving previous notice to the purchaser and any difference or deficiencies which may arise from, such re-sale, together with all expenses attending the same shall be made good by the purchaser.
7. The lots are sold with all faults and errors of description. No allowance can be made in any case, nor will the Vendors be answerable for any deficiencies in quantities or

measurements when the purchaser, his agent, carrier or man employed by him has removed any part of his lot or lots from the premises. All lots purchased must be removed absolutely in the time specified and if not so removed may be resold by the Vendors.

8. The Purchaser shall be answerable for all damages occasioned by any injury or other lots, by the removal of lots purchased by them, or to the premises and to repair or pay damages to the owners of same before the removal of their lots from the premises. In the event of any persons interested in the premises, claiming the whole or any part of a lot before its removal there from or if in the Auctioneer's opinion, the removal of any lot will endanger or permanently damage any building, the Auctioneer may, by written notice to the purchaser of such lot delivered to him or his Agent, or sent by post to his abode or place of business last known to the Auctioneers, rescind the sale of any such lot. The purchaser shall then be repaid his purchase money but shall not have or make any other claim.
9. Such lot or lots as are not cleared away agreeably to the condition of this sale, will not only be forfeited and may be dealt with under last condition, but the purchaser shall pay every expense attending the removal of any such lot or lots, and the costs of making good any damage occasioned by such removal. No lots shall be removed until the day following the last day of sale.
10. If any dispute or difference arises about any lot, or any other subject, the same shall be settled by the Auctioneers, with the approval of the Vendors, whose determination shall be final and binding on all parties concerned.
11. The Auctioneers nor the Vendors do not accept any liability for personal injuries of any description sustained or caused by any reason whatsoever by any person while on the premises or otherwise.
12. Purchasers will pay 15% Auctioneers Commission (minimum fee £1) + VAT on the commission.



*'The Christmas Sale'*

**Thursday 9th December @ 6.30pm**



An interesting selection of over 100 Paintings from artists past and present, Antique Furniture & Furnishings, Collectibles, 100 lots of Silver & Jewellery, Bronzes, Clocks including 3 Longcase Clocks, Viennas, etc . .

The entire catalogue is available to view on [easyliveauctions](https://www.easyliveauction.com/mcafeeauctions/)

<https://www.easyliveauction.com/mcafeeauctions/>

A virtual tour and a short video is also available to view on [www.mcafeeauctions.com](http://www.mcafeeauctions.com)

Viewing Tuesday 7th & Wednesday 8th 11.00 - 1.00, 2.00 - 5.00 & 6.30 - 8.00pm, by appointment, so telephone 028 2766 7669 to book your slot.

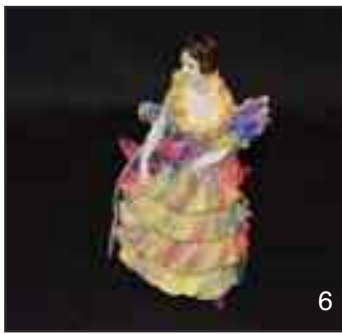
[easyliveAuction.com](http://easyliveAuction.com)



Telephone Number During Viewing & Sale  
**(028) 2766 7669 / 07860474956**



- 1 A Good Collection of Belleek
- 2 A Geobel Figurine of a 'Wren' and a Sundry Lot of Ceramics
- 3 A Geobel Figurine of a 'Shepherd Boy'
- 4 A Geobel Figurine of a 'Boy with Turnips'
- 5 A Four Shelf Open Display Unit
- 6 A Very Rare Early Royal Doulton Figurine 'Pamela', 1931 - 1937
- 7 A Very Rare Early Royal Doulton Figurine 'Reflections', 1938 - 1940
- 8 A Very Rare Early Royal Doulton Figurine 'The Bride', 1933 - 1949
- 9 An Unusual Lidded 'Fish Box' and a Collection of Small Dishes
- 10 A Fine Pair of Imari Japanese Chargers
- 11 An Oil Painting 'West of Ireland' - Verner Finlay
- 12 An Oil Painting 'Sailing Boat' - Michele
- 13 A Magnificent Watercolour 'Dutch Interior with Mother and Child', - Bertha Valkenburg
- 14 An Oil Painting 'Glenarm Bay' - David Peters
- 15 A Mahogany Bar Back Chair
- 16 A Royal Crown Derby Paperweight 'Pig'
- 17 A Royal Crown Derby Paperweight 'Pig'
- 18 A Royal Crown Derby Paperweight 'Cat'
- 19 A Mahogany Slimline Chest of Seven Drawers, complete with Dressing Slide
- 20 A Nice Sized Pair of Bronzed Stags, 15" Tall Approx
- 21 A Sketch Drawing 'Cottage at Dedham' Geoffrey Wilding
- 22 A Watercolour 'Shawsbridge' - William Ellis
- 23 A Large Oil Painting 'Birds and Seascape' - J Gilliland
- 24 A Nice Pair of Framed Portraits - W G Mackenzie
- 25 A Very Nice Early Gilt Wood Framed Overmantle
- 26 An Oil Painting 'Marshland Mill' - Wilfred Haughton
- 27 A Small Slim Wall Mirror and a Picture 'Cottage Hydrangeas'
- 28 A Nice Wall Mirror
- 29 A Vintage Figurine of 'Basil Brush'
- 30 A Nice Hexagonal Belleek Plate
- 31 A Wooden Mallet, Three Nice Seals and Two Magnifying Glasses
- 32 A Folding Decorative Fan
- 33 A Superb Royal Worcester Cabinet Plate, Hand Painted with Flowers signed E Phillips
- 34 A Japanese Footed Bowl and an Early Two Handled Lidded Bowl
- 35 An Antique Japanese Carved Ivory Figure of Monkeys on a Wooden Base
- 36 A Mahogany Framed Bevelled Glass Wall Mirror
- 37 An Inlaid Mahogany Side Cabinet/ Lamp Table
- 38 An Unusual Circular Dial Wall Clock
- 39 A Shield Back Mahogany Hall Chair
- 40 A Very Nice Inlaid Mahogany Brass Mounted Hexagonal Cellarette
- 41 An Oil Painting 'Still Life' - Leigh
- 42 An Early Oil Painting 'Bog Meadows' - W G Mackenzie
- 43 A Royal Navy Ships Plaque 'Sea Scout'
- 44 A Masonic Heraldic Painted Lodge Panel on Copper Bearing the Arms of Most Excellent Brother William Pick 18th degree freemasonary
- 45 A Very Nice Oak Cased Longcase Clock, Brass Dial
- 46 A Good Denby Tea and Dinner Set
- 47 A Bronze Figurine 'Boxing Hares', 6 1/2" Tall
- 48 A Pair of Mahogany Three Drawer Bedside Cabinets
- 49 A Superb Large Royal Dux Figure of a Boy and Two Oxen
- 50 An Oil Painting 'Watching them Off' - Markey Robinson
- 51 An Oil Painting 'Awaiting their Return' - Markey Robinson
- 52 A Watercolour 'Just Back' - Martin Hasson
- 53 A Watercolour 'Fishermen' - Martin Hasson
- 54 An Oil Painting 'Catching Tiddlers' - R Cochrane
- 55 A Watercolour 'Boathouse, Coleraine' - Gareth Giffen
- 56 A Large Oil Painting 'Morning in the Mournes' - William Cunningham
- 57 An Oil Painting 'North Antrim Coast' - Danny Todd
- 58 Two Felted Plaques with Miniature Insets
- 59 A Nice Framed Print 'Carnlough' - H Wilson
- 60 A Very Fine Inlaid Mahogany Mirror Backed Writing Desk, Gilted Gallery
- 61 A Very Nice Edwardian Inlaid Mahogany Open Armchair, Tapestry Back and Seat
- 62 An Inlaid Victorian Burr Walnut Music Cabinet
- 63 A Royal Doulton Figurine 'Lady Pamela'
- 64 A Royal Doulton Figurine 'Fiona'
- 65 A Very Good Large Royal Albert 'Lady Hamilton Tea and Dinner Set, TV Plates and Other Pieces
- 66 A Royal Crown Derby Paperweight 'Cat'
- 67 A Royal Crown Derby Paperweight 'Squirrel'
- 68 A Royal Crown Derby Paperweight 'Robin Nesting'
- 69 A Royal Crown Derby Paperweight 'Green Budgerigar'
- 70 A Nice Sized Pair of Bronze Figurines 'Boxing Hares', 11" tall
- 71 A Nice Handcrafted Pottery Pig by Anita Harris
- 72 A Figurine Based Table Lamp and Shade
- 73 An Aynsley Orchard Gold Circular Plate and Six Other Nice Assorted Plates



6



19



25



37



40



44



45



47



50



52



53



54



56



57



60



61



62



65



68



70



71



74

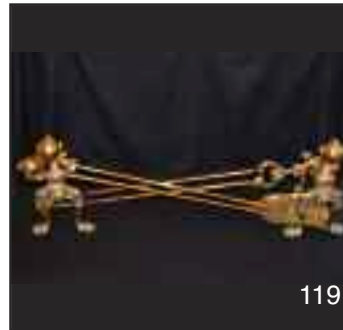


75



76

- 74 A Nice Inlaid Mahogany Two Door Side Cabinet
- 75 A Very Nice Victorian Mahogany Shaped Front Turnover Leaf Card Table
- 76 A Colclough Bone China Tea Set
- 77 A Very Nice Fine Porcelain Twenty Piece Dessert Set including Two Comports
- 78 A Shaped Side Mahogany Centre Table
- 79 A Small Mahogany Corner Cupboard
- 80 A Large Tuscan Bone China 'Seafern' Tea Set
- 81 A Victorian Mahogany Towel Rail
- 82 A Nice Set of Eleven Waterford Crystal Wine Glasses and one other Wine Glass
- 83 A German Figurine of an Alsatian Dog
- 84 Two Beswick Figurines of Dogs
- 85 A Mahogany Lamp Table
- 86 A Nice Victorian Mother of Pearl Inlaid Rosewood Writing Box
- 87 A Victorian Mahogany Sutherland Table
- 88 An Unusual Pair of Staffordshire 'Cats'
- 89 A Mahogany Nest of Three Tables
- 90 A Very Nice Edwardian Mahogany Ladies Writing Desk
- 91 A Lot of Five Royal Doulton Figurines, with Dogs and Cats
- 92 An Elizabethan Bone China 'Swiss Cottage' Tea Set
- 93 A Royal Doulton Figurine 'A Stitch in Time'
- 94 A Capodimonte Figurine 'Lady with Goats'
- 95 A Very Nice Regency Rosewood Drop Side Table, Centre Pedestal and Claw Feet
- 96 A Lot of Three Small Royal Doulton Figurines 'Special Friend', 'The Balloon Seller' and 'Sleepyhead'
- 97 A Victorian Mahogany Panel Door Bedside Cabinet
- 98 A Royal Doulton Figurine 'Jennifer'
- 99 A Royal Doulton Figurine 'Easter Day'
- 100 An Oil Painting 'Winter scene' - Markey Robinson
- 101 An Oil Painting 'Blowing a Gale' - Markey Robinson
- 102 A Watercolour 'North Antrim Coast' - F Harging
- 103 A Border Fine Art Figurine 'Charolais Family' Group
- 104 A Nice Hand Painted Clarice Cliff 'Bizarre' Circular Plate
- 105 A Very Nice Shaped Front Kingwood Hall Table, Gilted Mounts
- 106 A Nice Bronze Figurine 'Lady with Harp' 6" tall approx
- 107 A Tall Bronze Figurine 'Gent' 30" approximately approx
- 108 A Brass Based Table Lamp and Shade
- 109 A Gilt Framed Oval Mirror and a Smaller Pair of Gilt Framed Wall Mirrors
- 110 A Very Large Matched Royal Doulton & Royal Cauldron Tea and Dinner Set
- 111 An Oval Mahogany Breakfast Table, Carved Centre Pedestal
- 112 A Set of Four Mahogany Framed Upholstered Dining Room Chairs
- 113 A Good Rectangular Floor Rug
- 114 A Royal Doulton 'Lady Hamilton' Tea Set
- 115 A Set of Bone Handled Knives and a Cased Set of Pastry Forks
- 116 A Crystal Flower Vase and Two Crystal Presentation Vases
- 117 A Mahogany Shaped Front Side Table, Two Drawers
- 118 A Mahogany Framed Upholstered Stool
- 119 A Very Good Set of Heavy Brass Fire Irons and Dogs
- 120 A Sketch Drawing 'Female Face Studies' - Conor
- 121 An Oil Painting 'Looking over Strangford' - Fran Fitt
- 122 A Gilt Framed Oval Picture 'Young Lady'
- 123 A Nice Inlaid Mahogany Astragal Glazed Corner Cupboard
- 124 A Collection of Model Cars and Vans
- 125 A Very Nice Noritake 'Raleigh' Tea and Dinner Set, 50 Pieces
- 126 A Very Nice Pair of Gilt Framed Prints
- 127 A Watercolour 'Winter scene' - Alymer Armstrong
- 128 A Watercolour 'Fairhead' - Sam McLarnon
- 129 An Inlaid Mahogany Upholstered Open Armchair
- 130 A Large Globe of the World on Stand
- 131 A Substantial Brass Ships Navigation Compass, B Booke and Son Ltd, Hull
- 132 A 'Golf' Ball Desk Tidy
- 133 An Inlaid Mahogany Occasional Table
- 134 A Very Nice Watercolour 'Birds in Flight' - R W Milliken
- 135 An Oil Painting 'Over Valentines' - W J Watson
- 136 A Nice Set of Six Bound Volumes 'Treasury of Children's Classics'
- 137 A Two Handled Italian Pottery Flower Vase
- 138 A Nice Set of Mahogany Bookshelves
- 139 A Border Fine Art Figurine 'Belgian Blue Bull'
- 140 A Border Fine Art Figurine 'Charolais Bull'
- 141 A Good Mahogany Valet Stand
- 142 A Nice Fur Stole
- 143 A Hardwood Carved Mask
- 144 A Small Watercolour 'Daffodils' - Sheila Duff and a Framed Charles McAuley Print 'Harvest Day'
- 145 A Very Nice Onyx and Brass Corinthian Pillar Oil Lamp, Cut Glass Bowl
- 146 A Large and a Pair of Smaller Handkerchief Bowls



- 147 A Shaped Front Mahogany Double Pedestal Writing Desk, Leather Inset
- 148 An Oil Painting 'The Cavaliers' - Noel Shaw
- 149 A Gilt Framed Picture 'In the Meadows' after JF Herring
- 150 A Watercolour 'Above Downhill' - Bobbie Anderson
- 151 An Oil Painting 'Slemish Mountain' - R Cochrane
- 152 An Oil Painting 'North Antrim Coast' - Danny Todd
- 153 A Superb Large Watercolour 'Table D'Hote at a Dog's Home' - Ethel C Steer
- 154 A Watercolour 'Village Scene' - Signed
- 155 An Oil Painting 'Mussenden'
- 156 A Good Rectangular Floor Rug
- 157 A Good Lot of Linen
- 158 A Nice Inlaid Walnut Upholstered Open Armchair
- 159 An Inlaid Mahogany Astragal glazed Corner Cupboard
- 160 An Unusual Chinese Cloisonne and Bronze Lidded Two Handled Censor
- 161 A Vintage Smoking Pa-Pa Bear
- 162 A Gilt Framed Print 'The 4th Green Trevoise Golf Club, Cornwall'
- 163 A Watercolour 'Seascape' - Signed
- 164 A Watercolour 'Lough Gill, Sligo' - G W Morrison
- 164a A Watercolour 'Sheephaven' - G W Morrison
- 165 A Taxidermy of a Full Size Tiger and its cub
- 166 Two Nice Carltonware 'Rouge Royale' Bowls
- 167 A Pair of Mahogany Framed Upholstered Armchairs
- 168 A Nice Coloured Glass Flower Vase
- 169 A Pair of Waterford Crystal Condiments and a Galway Crystal Mantle Clock
- 170 An Oil Painting 'Close Shave' - Roy Gaston
- 171 A Watercolour 'Still Life' - Danny Todd
- 172 A Hummel Figurine 'Chimney Sweep'
- 173 An Unusual Gilted Metal Figurine Mantle Clock
- 174 A Good Lot of Linen
- 175 An Austrian Figurine Group 'Boy with Goat at Well'
- 176 A Pair of Ruby Glass Jugs
- 177 A Pair of Ruby Glass Jugs and Two Smaller Ruby Jugs
- 178 A Very Nice Circular Gilt Framed Wall Mirror
- 179 A Nice Hardwood Nest of Small Tables
- 180 A Nice Sized Fine Inlaid Mahogany Mirror Backed Display Cabinet
- 181 A Four Piece Silver Plated Tea Service on a Very Nice Shaped Side Two Handled Tray
- 182 A Six Piece Noritake Dressing Table Set
- 183 A Circular Mahogany Upholstered Footstool
- 184 An Unusual Carved Mahogany Plantstand
- 185 A Very Fine Mahogany Framed Stick Barometer, I Baltt, Brighton
- 186 An Oil Painting 'Lake Scene' - M J M Turner
- 187 An Oil Painting 'The Ballerina' - Noel Shaw
- 188 An Oil Painting 'Low Tide Portballintrae' - Noel Shaw
- 189 A Waterford Crystal Desk Clock and a Crystal Hand Bell
- 190 A Very Fine Inlaid Mahogany Glazed Corner Cupboard
- 191 A Nice Collection of Silver Plate Ware
- 192 An Oil Painting 'Terriers' - G Armfield
- 193 A Small Shaped Front Chest of Four Drawers
- 194 A Copperised Based Table Lamp and Shade and Another
- 195 A Metal Stick Stand in the form of an Umbrella
- 196 A Hunting Stick and Four Walking Canes
- 197 A Carved Hardwood Walking Cane
- 198 A Matched Pair of Limited Edition Woodcuts, 'Larne' and 'Inver Parish Church' - R G Sellar
- 199 A Pair of Gilt Framed Still Life Pictures
- 200 A Water Mill Near 'Ruislip' - Patrick Nasmyth
- 201 An Oil Painting 'In a Classic Garden' - Samuel Baldwin
- 202 A Sketch Drawing 'Cottage on the Hill' - M C Wilks
- 203 A Tapestry Topped Long John Style Coffee Table
- 204 A Watercolour 'Crooked Row, Glenoe' - Ray McDowell
- 205 An Unusual Oriental Figurine of a Cat - signed
- 206 A Pair of Inlaid Mahogany Chairs, Tapestry Seats
- 207 A Small Pokerwork Mahogany Wall Bracket
- 208 A Good Rectangular Floor Rug
- 209 A Small Mahogany Drop Leaf Table, Leather Inset
- 210 A Very Nice Mahogany Rectangular Topped Occasional Table
- 211 A Good Gilted Metal and Mesh Firescreen
- 212 A Capodimonte Figurine, a Pendelfin Figurine etc
- 213 A Cavan Crystal Footed Bowl and its Presentation Box
- 214 A Tyrone Crystal Footed Bowl and its Presentation Box
- 215 A Tyrone Crystal Dog
- 216 A Set of Six Crystal Wine Glasses
- 217 A Waterford Crystal 'John Rocha' Ships Decanter
- 218 A Crystal Jug and Six Crystal Tumblers
- 219 A Waterford Crystal Lidded Biscuit Barrell and a Waterford Crystal Fruit Bowl
- 220 A Watercolour 'Milking Time' - John Carey
- 221 A Nice Pair of Gilt Framed Crystoleums
- 222 A Large Oil Painting 'The Ballerina' - Tanya Smith
- 223 An Oil Painting 'Waterfall' - Dennis Thornton
- 224 A Lot of Old Stanley and Record Planes





164



170



173



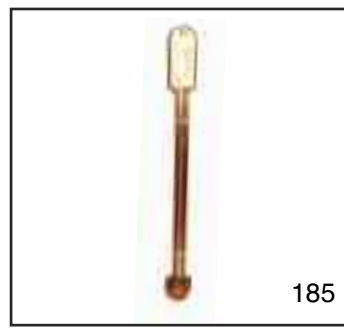
242



179



183



185



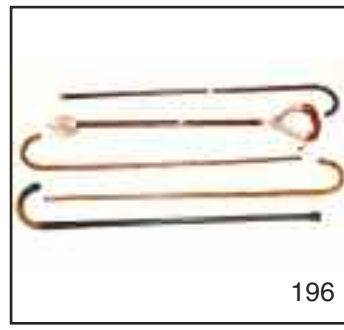
188



190



192



196



200



205



208



210



215



216



230



236



238



240



245

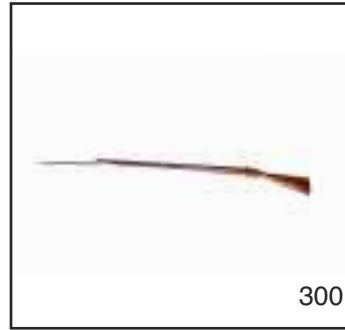


250



251

- 225 A Lidded Laundry Basket
- 226 A Heavy Gilt Framed Heavy Picture
- 227 A Heavy Gilt Framed Heavy Picture
- 228 A Large Embossed Brass Coal Box
- 229 A Silver Plated and Crystal Vinaigrette,  
Jelly Moulds etc
- 230 A Very Nice Mahogany Framed Upholstered  
Two Seater Settee
- 230a A Good Pair of Large Concrete Eagles, 36" Tall
- 231 A Small Tapestry Topped Occasional Chair
- 232 An Arch Topped Wall Mirror
- 233 A Mahogany Framed Tub Chair
- 234 A Lot of Three Crested Belleek Ribbon Plates
- 235 A Majolica Style Footed Dish
- 236 A Nice Belleek Patterned Dish
- 237 An Early Belleek Period Neptune Tea Tray
- 238 A Border Fine Art Figurine 'Simental Bull'
- 239 A Border Fine Art Figurine 'Aberdeen Angus Bull'
- 240 A Royal Standard and a Paragon China Tea Set
- 241 A Nice Victorian Mahogany Two Door Small Cabinet
- 242 A Good lot of 'Rupert' Annuals
- 243 A Silver Plated Tea Pot and a Set of Condiments
- 244 A Nice Belleek Jug, Vases etc
- 245 A Very Nice Victorian Mahogany Occasional Table  
on Centre Footed Pedestal
- 246 A Small Framed Royal Worcester Wall Plaque,  
signed, and a Small Oval Print
- 247 A Lidded Porcelain Urn
- 248 An Early Hand Painted Wall Plate
- 249 An English Pottery Biscuit Barrell
- 250 A Bottle of Bushmills 'Distillery Exclusive'
- 251 A Limited Edition Bottle of Bushmills 'Millenium Malt'
- 252 A Bottle of 'Port Cast' Malt Bushmills Whiskey
- 253 A Doulton Burslem Jug
- 254 An Aynsley Orchard Gold Circular Bowl
- 255 A Very Nice Royal Worcester Lidded Pot Pourri
- 256 A Royal Crown Derby Hand Painted Vase
- 257 A Geobel Figurine of a 'Pheasant'
- 258 A Nice Pair of Contential Porcelain Figurines
- 259 An Antique Japanese Bronze Vase
- 260 A Superb Royal Doulton Figurine of an English  
Setter with a Pheasant (a/f)
- 261 A Beswick Figurine of a Duck
- 262 A Moorcroft Vase, 6 1/2" tall
- 263 A Moorcroft Vase, 3 3/4" tall
- 264 A Moorcroft Vase, 3 3/4" tall
- 265 A Moorcroft Vase, 5" tall
- 266 A Moorcroft Vase, 7" tall
- 267 A Moorcroft Vase, 5" tall
- 268 A Lot of Four Pin Cushions, in the Form of Old Boots
- 269 A Good Lot of Nine plus One Crystal  
Drinking Glasses
- 270 A Tall Royal Worcester Jug, Hand Painted with  
Flowers
- 271 A Royal Worcester Flat Back Jug, Hand Painted  
with Flowers
- 272 A Lot of Four Handcrafted Pottery Small Bowls
- 273 A Mahogany Wine Table.
- 274 A Good Globe of the World on Stand
- 275 A Very Nice Gilted Metal and Enamelled Mantle Clock
- 276 A Royal Crown Derby Figurine 'Sheep'
- 277 A Royal Crown Derby Figurine 'Bear'
- 278 A Limited Edition Royal Crown Derby Figurine  
'Royal Windsor Corgi and its Certificate
- 279 A Limited Edition Royal Crown Derby Figurine  
'The Royal Corgi'
- 280 A Nice Shaped Four Drawer Chest of Drawers  
with Dressing Slide
- 281 A Good Lot of Copper Pans etc
- 282 A Circular Mahogany Plantstand
- 283 A Nice Wood Turned Based Table Lamp and Shade
- 284 A Good Edwardian Brass Coal Scuttle and Shovel
- 285 A Nice Upholstered Small Settee
- 286 A Mahogany Framed Dressing Table Stool
- 287 An Inlaid Mahogany Single Chair
- 288 An Inlaid Mahogany Sutherland Table
- 289 A Porcelain and Gilted Metal Two Handled Dish  
and a Vase Lid
- 290 A Good Rectangular Floor Rug
- 291 An Inlaid Mahogany Upholstered Single Chair
- 292 A Watercolour 'The Barn Owls' - Chris Stevens
- 293 A 'Bradleys of Halesowen' Handmade Canvas  
and Leather Fishing Bag
- 294 A 'Bradleys of Halesowen' Handmade Canvas  
and Leather Sandringham Game Bag
- 295 A 'Bradleys of Halesowen' Handmade Canvas  
and Leather Greenslip
- 296 A 'Bradleys of Halesowen' Handmade Canvas and  
Leather Gun Case
- 297 A Good 'Gun Mark' Leather Ammunition Belt
- 298 A Lot of Three Bird Decoys
- 299 A Good Wilco Fishing Net
- 300 An Enfield Tower, Three Band Muscat Bayonet and  
Steel Ram Rod
- 301 A Nice Sporting Rifle
- 302 A Nice Sporting Rifle
- 303 A Nice Sporting Rifle
- 304 A Nice Sporting Rifle



- 305 A Leather and Brass Bound Wooden Gun Box -  
John Rigby & Co, Dublin and London (original Rigby  
label and Redbaize)
- 306 A 19th Century Heavy Metal Carriage Strong Box
- 307 Two Old Ammunition Boxes
- 308 A 1907 Bayonet Lee Enfield Rifle
- 309 A WWI Bayonet
- 310 A 15mm Pin Fire Double Barrelled Pistol
- 311 A WWI German Butcher Bayonet
- 312 A Jaffa Fur Jacket
- 313 A Brands & Norman Fur Jacket
- 314 A Gents Sheepskin Coat
- 315 An Oil Painting 'Castlerock' - Danny Todd
- 316 A Watercolour 'The Revellers' - Bobbie Anderson
- 317 A Mahogany Framed Upholstered Single Chair
- 318 A Sketch Drawing 'Dealing Men' - G A Gourley
- 319 An Inlaid Mahogany Nest of Three Tables
- 320 An Inlaid Mahogany Two Door Display Cabinet
- 321 An Oriental Figurine of a Cat, signed
- 322 An Onyx Based Table Lamp and Shade and Another
- 323 A Mahogany Shield Back Upholstered Single Chair
- 324 A Nice Victorian Silver Plated Spirit Kettle
- 325 A Very Nice Oil Painting 'Carol Singers' -  
William Hoffman
- 326 A Glass Bowl with Silver Rim, Birmingham 1913
- 327 A Nice Pair of Oval Wall Plaques
- 328 A Lot of Six Tyrone Crystal Hock Glasses
- 329 A Lot of Six Waterford Crystal Footed Sundae Dishes
- 330 A Crystal Jug, Crystal Tumbler and a Set of  
Three Waterford Crystal Sundae Dishes
- 331 Two Nice Lidded Sauce Boats and their Ladles and  
Three Pieces of Royal Cauldron Victoria Ware'
- 332 A Slimline Mahogany Two Tier Table
- 333 A Mahogany Coffee Table and a Small Folding Table
- 334 An Upholstered Bedroom Chair
- 335 A Bronze Lidded Chinese Two Handled Censor
- 336 An Oil Painting 'Lively Youngster' - Noel Shaw
- 337 An Oil Painting 'A Fine Horse' - Noel Shaw
- 338 A Lot of Three Framed Black and White Prints  
'Hay Making', 'On the Promenade' and  
'The Pensioner'
- 339 A Limited Edition Print 'Chaffinch and Nest' -  
E W Milliken
- 340 A Nice Gilt Framed Picture 'The Parish Clerk'
- 341 A Nice Oval Framed Oil Painting 'River Scene' signed
- 342 An Oval Framed Wall Mirror
- 343 A Pair of Pottery Baskets
- 344 A Mahogany Hall Table, Carved Back, Centre Drawer
- 345 A Nice Austrian Figurine 'The Goose Girl'
- 346 A Lot of Two Framed Tapestries
- 347 A Pair of Bevelled Glass Framed Wall Mirrors
- 348 A Rare Volume 'Round the Coast of Northern Ireland  
by Rev Canon Hugh Forde MA 1st Edition,  
Belfast 1928
- 349 A Six Piece Noritake Dressing Table Set
- 350 A Five Piece Painted Bedroom Suite
- 351 A Six Piece Dressing Table Set
- 352 A Gilted Metal Base Table Lamp and Shade and  
Another
- 353 A Circular Convex Wall Mirror
- 354 A Mahogany Standard Lamp and Shade
- 355 A Rare Limited Edition 'Snowy Owl' Figurine and  
Associated Accessories, all handmade by the  
Indians and including a framed Map
- 356 A Watercolour 'Mussendun' - F Hardy
- 357 An Oil Painting 'Harbour Scene' - signed
- 358 A Gilt Framed Oval Bevelled Glass Wall Mirror
- 359 A Pair of Nicely Framed Classical Prints
- 360 A Nice Set of Three Display Suitcases
- 361 A Good Lot of Twelve Crystal Wine Glasses
- 362 Two Nice Fashion Prints
- 363 A Watercolour 'The Giant's Causeway' - B Mullan
- 364 An Oil Painting 'Rough Seas' - Danny Todd
- 365 A Nice Tempus Fugit Triple Weight  
Granddaughter Clock
- 366 A Watercolour 'Lurigedan, Antrim Coast' -  
W Lawrence
- 367 A Royal Doulton Figurine 'Autumn Breezes'
- 368 A Royal Doulton Figurine 'Bess'
- 369 A Crystal Vase, Decanter, Glasses etc
- 370 A New Double Weight Vienna Wall Clock by  
Master Craftsman N D Warnock
- 371 A Highly Carved Standard Lamp and Shade
- 372 An Oil Painting 'The Coast Road, Near Fairhead' -  
R Cochrane
- 373 An Oil Painting 'Mussendun Temple' - R Cochrane
- 374 A Nice Edwardian Inlaid Mahogany Chair
- 375 A Mahogany Twin Pedestal Occasional Table
- 376 A Gilt Framed Bevelled Glass Wall Mirror
- 377 An Oil Painting 'Robin' - E Jones
- 378 An Oil Painting 'Central Park' - T Crosby
- 379 An Oil Painting 'Whiterock, Portrush' - E J Byrne
- 380 A Fine Oil Painting 'Rathlin on a Misty Morning' -  
Wilfred Naughton 1974
- 381 A Nice Oval Bevelled Glass Wall Mirror
- 382 A Pair of Nicely Framed Pictures
- 383 A Sundry Lot of a Masons Ironstone Two  
Handled Planter, Jug etc
- 384 An Interesting Lot of Copper, Scales etc



390



392



395



397



399



401



404



410A



411



418



419



421



422



423



424



425



429



430



433



434



436



445



447



448

- 385 An Old Blue and White Platter and Other Blue and White Plates
- 386 A Sundry Lot of Ceramics
- 387 A Lot of Mainly Plant Pots
- 388 A Nice Pair of Gilt Framed Oil Paintings 'Landscapes'
- 389 A Nice Pair of Gilt Framed Botanical Prints
- 390 An Oil Painting 'Morning Exercise' - W J Watson
- 391 An Oil Painting 'Country Lane' - J McNulty
- 392 An Oil Painting 'Robin' - Con Campbell
- 393 An Oil Painting 'Beyond Berryhead' - Elizabeth Bovill
- 394 An Oil Painting 'Cottage on the Hill' - J P Rooney
- 395 An Oil Painting 'Waiting for His Return' - J P Rooney
- 396 An Oil Painting 'Winter Scene' - William Cunningham
- 397 A Watercolour 'Lake Scene' - A Warrington
- 398 A Set of Three Inlaid Wooden Picture Frames
- 399 An Oil Painting 'River Scene' - Tom McGoldrick
- 400 A Watercolour 'Woodland Scene'
- 401 An Early Old Framed Map of Ireland
- 402 A Fine Oil Painting 'Ballintoy' - David Bond Walker RUA
- 403 An Oil Painting 'Nightlife'
- 404 A Nice Gilt Framed Pier Mirror
- 405 A Large Circular Mahogany Framed Bevelled Glass Wall Mirror
- 405a An Oil Painting 'Evening Walk' - Liam Reilly
- 406 A Good Lot of Six Crystal Tumblers
- 407 A Good Lot of Eight Tyrone Crystal Hock Glasses
- 408 A Lot of Seven Crystal Sundae Dishes
- 409 A Ships Style Decanter and Six Crystal Tumblers
- 410 A Lot of Six Drinking Glasses and Five Other Wine Glasses
- 410a An Oil Painting 'l'artiste' - Jonathan Knuttel
- 411 An Oil Painting 'Collie Dog' - Con Campbell
- 412 An Oil Painting 'The Blue Horse' - Con Campbell
- 413 An Oil Painting 'Red Rum' - Con Campbell
- 414 An Oil Painting 'The Dancer' - Lorna Millar
- 415 A Victorian Mahogany Occasional Table
- 416 A Good Crystal Water Jug, Crystal Vase and a Crystal Jug (a/f)
- 417 A Nice Pair of Oriental Figures
- 418 A Very Nice Mahogany Cased Double Weight Vienna Wall Clock
- 419 A Large Mahogany Cased Bracket Clock, Silver Dial
- 420 A New Pine Triple Weight Longcase Clock by Master Craftsman N D Warnock
- 421 A Nice Mahogany Occasional Drop Leaf Table, Ball and Claw Feet
- 422 A Nice Mahogany Child's High Chair
- 423 An Oak Monks Bench
- 424 An Unusual Set of Eight Geobel Gnome Figurines
- 425 A Very Nice Japanned and Decorated Longcase Clock, Brass and Silvered Dial
- 426 A Watercolour 'Village Scene' - R Cresswell Boak
- 427 An Oil Painting 'Heading Out' - T A Strain
- 428 An Oil Painting 'The Blacksmith' - Roy Wallace
- 429 An Oil Painting 'Slemish' - D Fahy
- 430 A Mahogany Cased Longcase Clock, Painted Arch Dial
- 431 An Oil Painting 'Towards the Mournes' - David Peters
- 432 A Watercolour 'North Antrim Coast' - Jack Wilkinson
- 433 An Oil Painting 'Roy Gaston at Cushendun' - Noel Shaw
- 434 A Nice Framed Picture 'The Doffers' - Hugh Clawson
- 435 An Inlaid Mahogany Mirror Backed Display Cabinet
- 436 A Moorcroft Vase, 5" tall
- 437 A Moorcroft Vase, 4" tall
- 438 A Moorcroft Vase, 8" tall
- 439 A Moorcroft Vase, 4" tall
- 440 A Waterford Crystal Jug and Sugar, Two Waterford Crystal Condiments and Two Glass Dishes
- 441 A Nicely Decorated and Gilted Oriental Breakfast Set
- 442 A Lot of Six Crystal Wine Glasses
- 443 A Crystal Candleholder and a Large Collection of Assorted Crystal
- 444 A Good Lot of Silver Plate Ware
- 445 A Large Bronze 'Horse and Foal', 12" tall
- 446 A Large Oil Painting 'Looking Towards Rathlin from Whitepark Bay' - Tom McGoldrick
- 447 A Large Oil Painting 'Mending Nets' - Hamilton Sloan
- 448 A Very Good Mahogany Cased Double Weight Vienna Wall Clock
- 449 A Superb Edwardian Mahogany Standard Lamp
- 450 A Limited Edition Print 'Dawn Chorus' - Catherine Callaghan
- 451 An Oil Painting 'Horse and Foal' - Con Campbell
- 452 A Nice Mahogany Canterbury
- 453 A Good Mahogany Towel Rail
- 454 An Oil Painting 'Barn Owls' - Chris Stephen
- 455 An Early Watercolour 'The Strand, Castlerock' - George Farrell
- 456 A Watercolour 'The Old Town Hall' - Leonard Lewis
- 457 A Watercolour 'Fresh Pastures' - F Bottomley
- 458 A Tuscan Bone China Coffee Set
- 459 A Royal Albert 'Heirloom' Twenty One Piece Tea Set
- 460 A Nice Mahogany Two Door Small Sideboard
- 461 A Very Large Smokey Quartz Geode
- 462 A Watercolour 'The Buttermilk Bridge, Dungiven' - Aylmer Armstrong
- 463 A Watercolour 'Cushendun Bridge' - Sam McLarnon
- 464 A Watercolour 'Castlerock' - R G Sellar



451



452



453



454



457



459



460



461



462



463



464A



468



469



471



476



482



494



495



496



497



499



500



502



503

- 464a An Oil Painting 'Grace' - Alan Beers
- 465 An Oil Painting 'Boating Near Dunluce' - JP Rooney
- 466 A Lot of Six Belleek Christmas Plates
- 467 A Circular 'Golfers' Table
- 468 A Gilt Framed Upholstered Armchair
- 469 A Very Good Large Fall Front Coal Scuttle
- 470 A Superb Victorian Oil Painting signed Langois
- 471 A Fine Watercolour 'River Valley' - T W Morley
- 472 A Lot of Five Belleek Christmas Plates
- 473 An Oil Painting 'Still Life' - Ann Michael
- 474 An Oil Painting 'The Old Bridge' - Fred Watson
- 475 An Oil Painting 'Shawlies, Fairhead' -  
Desmond Munroe
- 476 An Oil Painting 'Bagging Turf' - Desmond Munroe
- 477 A Very Nice Carved Barometer
- 478 A Very Nice Mahogany Wall Bracket
- 479 An Inlaid Mahogany Drop Leaf Coffee Table
- 480 A Very Good Old Bleach Linen Sheet Set
- 481 A Brass Companion Set on Stand
- 482 A Small Upholstered Stool
- 483 A Mother of Pearl Inlaid Sewing Box
- 484 A Tapestry Topped Sewing Box
- 485 A Mahogany Folding Cakestand
- 486 A Pair of Heavy Gilt Framed Pictures
- 487 A Nao Figurine 'Girl with Wheelbarrow
- 488 Two Nao Figurine 'Girl with Flowers' and 'Girl  
with Bird'
- 489 A Pair of Victorian Oil Paintings 'Landscapes'
- 490 A Framed Pencil Drawing- Monogrammed L.S.L  
(believed to be an original Lowry)
- 491 A Victorian Silver Crown 1892
- 492 A Victorian Silver Crown 1896
- 493 A Victorian Silver Crown 1889
- 494 A Victorian Silver Crown 1897
- 495 A Victorian Silver Crown 1890
- 496 An Early Old Compass
- 497 A Silver Pendant Watch and a Gilted Metal  
Long Chain
- 498 A Gold Plated Gents Pocket Watch
- 499 A Britanniarum Rex Fidel Defenser Enamelled  
Coin Pendant
- 500 A Cased Presentation Key Presented to Rt Hon  
Augustine Birrell BC MB, 3rd Oct 1907 of the opening  
of Municipal Technical College (see paperwork)
- 501 A 17th Century King William III Prince of Orange  
and Queen Mary II Coronation Medal in Brass 1689
- 502 A Small Silver Ladle Edinburgh 1823 and A Pair  
of Sugar Nips, London 1892
- 503 Two Lots of Two Silver Teaspoons
- 504 A Small Silver Dish
- 505 A Four Piece Silver Tea Service, Sheffield 1932
- 506 A Silver Toddy Ladle with Coin Inset
- 507 A Small Silver Jug,
- 508 A Silver Snuff Box, London 1899, Bearing ER Royal  
Cypher for Edward VII, Cypher was added much later
- 509 A Silver Dishes, Birmingham 1898 and Sheffield 1901
- 510 A Large Silver Cream Jug, London 1828
- 511 A Silver Cream Jug, Birmingham 1916
- 512 A Small Silver Jewel Box
- 513 A Silver Topped Condiment Birmingham 1902 and  
a Silver Topped Salt
- 514 A Pair of Silver Three Handled Condiments,  
Birmingham 1907
- 515 A Rare Silver Bowl, London 1903 and its Stand
- 516 A Silver Topped Sugar Shaker, London 1910
- 517 A Silver Circular Dish
- 518 Two Silver Dishes, Birmingham 1897 and  
Birmingham 1909
- 519 A Silver Sauceboat, Sheffield 1938
- 520 An Early Silver Two Handled Lidded Bowl,  
Dublin 1905
- 521 A Silver Cigaretter Case, Birmingham 1913
- 522 A Large Silver Snuff Box, and Match Striker,  
Birmingham 1827, John Bettridge
- 523 Two Silver Condiments, Sheffield 1909
- 524 A Pair of Silver Vases, Sheffield 1903
- 525 A Pair of Silver Candlesticks, Birmingham 1909
- 526 A Pair of Three Handled Silver Condiments,  
Birmingham 1907
- 527 A Silver Inkwell, Birmingham 1907
- 528 A Victorian Silver Helmet Shaped Cream Jug,  
London 1894
- 529 A Silver Whiskey Noggin Jug, Birmingham 1976
- 530 A Very Good Large Irish Silver Ladle, Dublin 1831
- 531 A Superb Pair of Irish Silver Bright Cut Serving  
Spoons, Maker James Salter of Cork  
Hallmarked Dublin 1799
- 532 A Silver Jug, Chester 1916
- 533 A Pair of Silver Two Handled Bud Vases,  
Birmingham 1910
- 534 A Silver Photoframe by R Carr, Sheffield 2001
- 535 A Very Nice Pair of Silver Candlesticks,  
Birmingham 1962
- 536 A Very Large Solid Silver Candlstick,  
Birmingham 1937
- 537 A Superb Cast Silver 'King Fisher' on a Turned  
Wood Base Under Glass Dome, London 1982,  
Maker Piers Hart
- 538 A Victorian Silver Vinaigrette, Francis Clark,  
Birmingham 1878, Francis Clark





- 539 A Large Georgian Irish Silver Teapot, Dublin 1808, Robert Breading
- 540 A Superb Solid Silver Salver Presented to William Govan by the Directors of John Kelly Coal Boats, London 1949, Maker Israel Freeman
- 541 A Nice Pair of Silver and Mother of Pearl Dishes, Chester 1916
- 542 A Cased Set of Six Silver Anointing Spoons for coronation of Edward VII, Sheffield 1901
- 543 A Pair of Silver Bright Cut Tablespoons, London 1804
- 544 Two Silver Hairbrushes, Birmingham 1907 and Silver Clothes Brush
- 545 A Superb Beaten Silver Cigarette Case with an Enamel Portrait of a Girl, Birmingham 1909, Henry Williamson
- 546 A Silver Dish on Four Feet, Sheffield 1911
- 547 An Unusual Silver Plated Beaten Footed Bowl
- 548 A Solid Silver Plaque 'Lions' on a Mahogany Frame
- 549 Two Silver Spoons and a Collection of Other Silver Spoons
- 550 A Gents Sekonda Wrist Watch
- 551 An 1896 Crown
- 552 A 1902 Crown
- 553 A 9ct Gold Diamond Ring
- 554 A Victorian Brooch 'Mother'
- 555 An 18ct Yellow Gold Diamond Twist Three Stone Ring
- 556 An 18ct Gold Ruby and Diamond Ring
- 557 A 9ct Gold Bracelet
- 558 A Silver Pendant and Chain
- 559 An 18ct Gold Sapphire and Diamond Ring, Birmingham 1915
- 560 A Very Nice Platinum Sapphire Diamond and Cluster Ring
- 561 An Edwardian 9ct Rose Gold Ruby and Pearl Ring, Birmingham 1905
- 562 A Nice Pair of Gold and Opal Earrings
- 563 A 9ct Gold and Diamond Pendant and Chain
- 564 A 9ct Gold Cameo Ring
- 565 A Very Nice Platinum Aqua and Diamond Ring
- 566 A 9ct Gold Diamond and Ruby Brooch
- 567 A 9ct Gold Cross and Chain
- 568 A 9ct Gold and Decorated Pendant
- 569 An 18ct Gold and Diamond 'Bow' Ring
- 570 An Very Nice 18ct Yellow Gold Tanzanite Cluster Ring
- 571 A Superb 9ct Gold Large Diamond Cluster Ring
- 572 A Victorian 9ct Rose Gold Ruby and Diamond Ring
- 573 A Nice 9ct Gold Ruby and Diamond Cluster Ring
- 574 A 9ct Gold 6 Brilliant Diamond Ring
- 575 A Superb 18ct Gold and Diamond (4ct) Bracelet
- 576 A 9ct Gold Ladies Watch, Rolled Gold Bracelet
- 577 A Large 9ct Gold Cameo Brooch
- 578 An 18ct White Gold Diamond Cluster Ring
- 579 A Long 9ct Gold Chain
- 580 A Very Nice Platinum Yellow Sapphire Ring
- 581 A Superb 18ct Gold Large Three Diamond Ring
- 582 A Large Silver Fob
- 583 A 9ct Gold and Emerald Ring
- 584 A 9ct Gold Three Stone Garnet Ring
- 585 A Victorian Silver Horse Shoe Ring, Birmingham 1882
- 586 An 18ct Gold Emerald and Diamond Cluster Ring
- 587 An 18ct Gold Diamond Dress Ring
- 588 A 9ct Gold and Garnet Ring
- 589 A 9ct Gold Pendant and Chain
- 590 An 18ct Gold Emerald and Diamond Cluster Ring
- 591 A Nice Pair of 9ct Gold Cufflinks
- 592 An 18ct Gold and Platinum Five Diamond Ring
- 593 A 9ct Gold and Sapphire Ring
- 594 A 9ct Gold Garnet and Cubic Zirconia Ring
- 595 A Very Nice 18ct Gold and Diamond Bracelet
- 596 A Pair of Heavy Silver Cufflinks
- 597 A Very Heavy 9ct Gold Charm Bracelet
- 598 An 18ct Gold Seven Stone Princess Cut Ring
- 599 A Nice 9ct Gold Necklace
- 600 A Very Nice 14ct Gold and Diamond Bracelet
- 601 A 9ct Gold and Diamond Bracelet
- 602 An 18ct Gold and Diamond Cluster Ring
- 603 A 15ct Gold Cross Pendant on a 9ct Gold Chain
- 604 A Nice Victorian Silver Bangle
- 605 A Fine 9ct Gold Bracelet
- 606 A 9ct Gold Masonic Ring
- 607 A 9ct Gold Cubic Zirconia Ring
- 608 A 9ct Gold Masonic Ring
- 609 A 9ct Gold Citrine Dress Ring
- 610 A Very Nice 9ct Gold and Diamond Ring
- 611 A Nice Gold Plated Necklace
- 612 A Nice Gold Plated Necklace
- 613 A Ladies and a Gents Wrist Watch
- 614 A Silver Chain and a Silver Locket
- 615 A Ladies Citizen Quartz Wrist Watch and Other Pieces of Jewellery
- 616 A Box of Costume Jewellery
- 617 A Box of Costume Jewellery



550



555



560



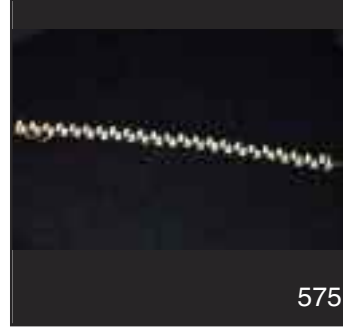
565



570



571



575



577



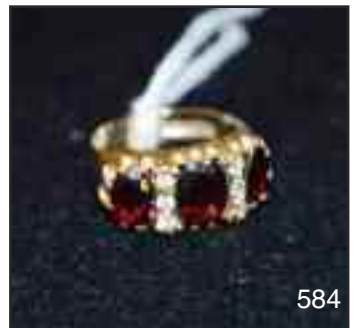
579



580



581



584



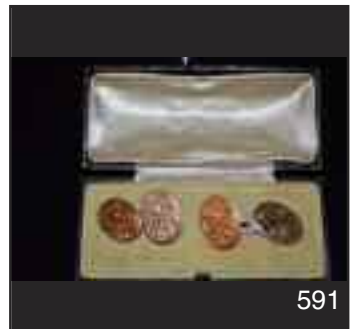
586



587



590



591



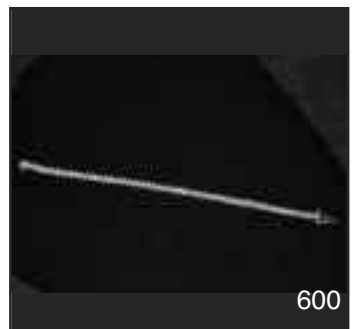
594



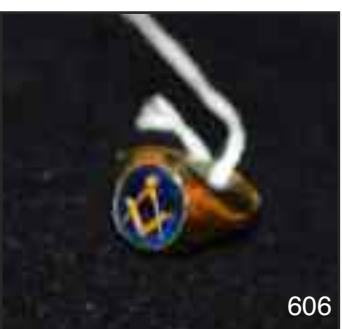
597



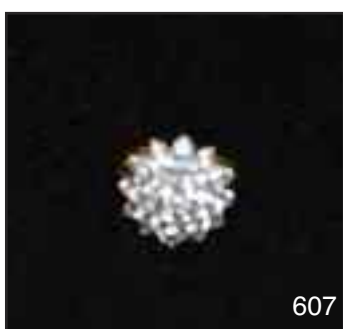
598



600



606



607



608



610

# mafee



51 Main Street, Ballymoney, BT53 6AN, Tel: (028) 2766 7669