

mrafee

Ballymoney



Thursday 21st March @ 6:30pm

Conditions

1. The highest approved bidder shall be the purchaser. The Auctioneer reserves the right to refuse any bid, and should any dispute arise between two or more bidders, the lot or lots in dispute shall be put up again, or not, and resold at the discretion of the Auctioneer, or the auctioneer may declare the purchaser. The Auctioneer reserves the right to bid on behalf of the vendor up to and including any reserve price placed on any lot and to alter, divide, group or withdraw any lot or lots either before or at any time during the sale.
2. The Auctioneer shall regulate the bidding and no bid shall be retracted.
3. Every purchaser shall give his name and place of abode, in default of which the Auctioneers shall have the power to resell at once, or afterwards as they may think fit.
4. Each bidder shall be supposed to have seen and to be thoroughly acquainted with the contents and conditions of the lot or lots on which he may bid, and no allowance whatsoever will be made for any faults, imperfections or errors of any description. The measurements and quantities described in the Catalogue are believed to be correct and must be taken as such. The purchaser being held to have satisfied himself as to measurements and quantities and other specifications in the Catalogue before bidding, neither will the Auctioneers or the Vendors be responsible for any lot or parts of any lot after the fall of the hammer, from which time all lots purchased are at the risk of the Purchaser.
5. The Auctioneers or the Vendors do not guarantee the measurements catalogued, or the correct description, genuineness or authenticity of any lot.
6. Each purchaser shall pay the whole amount of his purchase money (Auctioneer's Commission payable by purchaser) for all lots bought by him before any lot or lots can be removed and the whole amount due from each purchaser must be absolutely paid on each day of the sale and if not paid within such time, all moneys deposited in any part payment shall be absolutely forfeited and the Auctioneers will be at liberty to resell the lot or lots or any parts thereof remaining un-removed, by Public Sale or otherwise, without giving previous notice to the purchaser and any difference or deficiencies which may arise from, such re-sale, together with all expenses attending the same shall be made good by the purchaser.
7. The lots are sold with all faults and errors of description. No allowance can be made in any case, nor will the Vendors be answerable for any deficiencies in quantities or

measurements when the purchaser, his agent, carrier or man employed by him has removed any part of his lot or lots from the premises. All lots purchased must be removed absolutely in the time specified and if not so removed may be resold by the Vendors.

8. The Purchaser shall be answerable for all damages occasioned by any injury or other lots, by the removal of lots purchased by them, or to the premises and to repair or pay damages to the owners of same before the removal of their lots from the premises. In the event of any persons interested in the premises, claiming the whole or any part of a lot before its removal there from or if in the Auctioneer's opinion, the removal of any lot will endanger or permanently damage any building, the Auctioneer may, by written notice to the purchaser of such lot delivered to him or his Agent, or sent by post to his abode or place of business last known to the Auctioneers, rescind the sale of any such lot. The purchaser shall then be repaid his purchase money but shall not have or make any other claim.
9. Such lot or lots as are not cleared away agreeably to the condition of this sale, will not only be forfeited and may be dealt with under last condition, but the purchaser shall pay every expense attending the removal of any such lot or lots, and the costs of making good any damage occasioned by such removal. No lots shall be removed until the day following the last day of sale.
10. If any dispute or difference arises about any lot, or any other subject, the same shall be settled by the Auctioneers, with the approval of the Vendors, whose determination shall be final and binding on all parties concerned.
11. The Auctioneers nor the Vendors do not accept any liability for personal injuries of any description sustained or caused by any reason whatsoever by any person while on the premises or otherwise.
12. Purchasers will pay 15% Auctioneers Commission (minimum fee £1) + VAT on the commission.



Ballymoney

Fine Furnishings

The Auction Rooms, Main Street

Thursday 21st March @ 6.30pm



An Interesting Sale of Antique Furniture and Furnishings, Paintings inc works by McAuley, Gaston, Morrison, Carey, Markey, Shaw, McLarnon, Rooney etc, clocks, collectibles, a private collection of oil lamps, mirrors, crystal.

Coins including 10 Gold Sovereigns, Jewellery including lots of Gold and Silver chains, Gold Watch, Gold and Silver Rings etc, Large Collection of Cliftonville and other Football Team Badges, Lots of Solid Silver, Rocking Horse, Writing Boxes, Tea and Dinner Sets, WWI Sword.

The entire catalogue is available to view on [easyliveauctions](https://www.easyliveauctions.com/mcafeeauctions/)

<https://www.easyliveauction.com/mcafeeauctions/>

A virtual tour and a short video is also available to view on www.mcafeeauctions.com

Viewing Tuesday and Wednesday 19th & 20th March
3.00 - 5.00 and 6.30 - 8.00pm and the day of sale
Thursday 3.00 - 5.00pm.

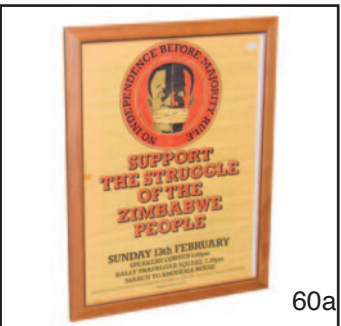
easyliveAuction.com



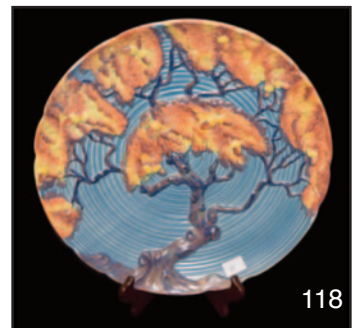
Telephone Number During Viewing & Sale
(028) 2766 7669 / 07860474956



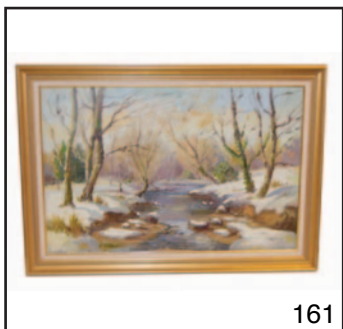
- 1 A Nice Shaped Side Gilt Framed Wall Mirror
- 2 A 'Capricorn' Signed Print
- 3 A Pair of Staffordshire Dogs
- 4 Two Radford Plates
- 5 A Pair of Inlaid Mahogany Framed Nursing Chairs
- 6 An Old Bed Warmer, Turned Handle
- 7 An Unusual Mirror Backed Wall Bracket
- 8 An Unusual Mirror Backed Wall Bracket
- 9 A Large Figurine 'Sitting Lady'
- 10 A Nice Sized Roll Top Writing Desk
- 11 An Oval Coffee Table, End Drawer
- 12 A Watercolour 'The Half Door' - Rodger Waring
- 13 An Early Boxed 'Singer' Button Holer
- 14 A Capodimonte Style Figurine of an Old Man
- 15 A Nice Bronzed Table Lamp with Lustre Shade
- 16 A Shaped Front Mahogany Two Drawer Hall Table
- 17 A Nice Gilt Framed Bevelled Glass Wall Mirror
- 18 A Nice Framed Print 'Landscape'
- 19 A Masons Ironstone Jug, Two Lustre Jugs and Another
- 20 A New Cast Iron Round 'Analon' Casserole Dish
- 21 A Nice Pair of Framed Prints 'Lavender Field' and 'Lavender Horizon'
- 22 A Watercolour 'Whiterocks' - Ursula Spry
- 23 Two Bags of Golf Balls
- 24 A Sundry Lot of a Cheeseboard, Knives etc
- 25 A Nice Set of Four Still Life Oil Paintings - H R Lilley
- 26 A Good Box of Cameras and a Takuma Lens
- 27 A Good Painted Shoe Last
- 28 A Ceramic Table Lamp Base and Three Vases
- 29 A Circular Convex Wall Mirror
- 30 A Very Good Collection of Pamphlets, Posters, Cards etc
- 31 A Four Fold Firescreen
- 32 An Oil Painting 'Fisherman's Cottage' - R Cochrane
- 33 A Pair of Oil Paintings 'Landscapes'
- 34 Two Part Teaset etc
- 35 A Japanese Plant Pot
- 36 A Blue Flower Japanese Plant Pot
- 37 Two Bags of Golf Balls
- 38 A Three Piece Sadler Tea Service
- 39 A Nice Royal Stafford Teaset
- 40 A Pair of Oil Lamps and Stands on Mahogany Brackets
- 41 A Crystal Glass Candle Holder and Other Pieces of Crystal
- 42 A Very Nice Punch Bowl, Cups and Ladle
- 43 A Walnut Corner Table, Centre Drawer
- 44 A Pair of Royal Doulton Dogs
- 45 A Small Mahogany Corner Cupboard
- 46 A Collection of Easter Eggs and Decorations
- 47 A Good Metal Lidded Trunk
- 48 Two Crystal and Silver Plated Claret Jugs
- 49 An Oil Painting 'Slemish' - David Overend
- 50 An Oil Painting 'The Causeway' - Mark McMeekin
- 51 A Lot of Old Irons and a Shoe Last
- 52 A Set of Green Shop Scales and Three Weights
- 53 Two Good Circular Planters, One a/f
- 54 A Nicely Framed Print and Another 'Driving a Bargain'
- 55 A Very Nice Pair of Brass Buckets
- 56 A Nicely Framed Print 'Please Listen'
- 57 A Good Lot of Six Stamp Albums
- 58 Two Stamp Albums
- 59 A Watercolour 'Seagulls' - Ralph Keling
- 60 A Watercolour 'Out Walking' - Ralph Keling
- 60a An Early 'Zimbabwe People' Framed Poster
- 61 An Upholstered Armchair
- 62 Two Early Volumes 'The Natural History of Birds'
- 63 A Very Nice Cottage Lamp Ruby Bowl and Shade
- 64 Two Pieces of Royal Albert 'Old Country Rose' Ware and a Similar Boot
- 65 Two Framed Engravings 'The Run of the Season' and 'Three Offers' - Alfred William Scott
- 66 A Nice Victorian Mahogany Two Drawer Side Table
- 67 A Three Piece Portmeirion Coffee Service
- 68 A Very Nice Oval Etched Glass Wall Mirror
- 69 A Very Nice Pair of Gilted Metal and Crystal Wall Brackets



- 70 A Slimline Chest of Seven Drawers
- 71 An Oil Painting 'La Grenouillere'
- 72 An Oil Painting 'Cornstacks'
- 73 A Very Nice Edwardian Inlaid Mahogany Armchair
- 74 An Oil Painting 'Slemish' - David Overend
- 75 A Nice Gilt Framed Print 'Ballintoy' - Sam McLarnon
- 76 A Royal Doulton Figurine 'The Balloon Man'
- 77 A Royal Doulton Figurine 'The Old Balloon Seller'
- 78 A Nice Gilted and Decorated Five Branch Candelabra
- 79 Three Pretty Victorian Cups and Saucers
- 80 A Very Nice and Unusual Marble Top and Gilt Mounted Occasional Table
- 81 A Blue Bowl Cottage Lamp
- 82 A Large Ceramic 'Stork' Planter
- 83 A Ruby Glass Jug and Another
- 84 A Very Nice Shaped Framed Hall Table, One Long Drawer
- 85 A Very Tall Large Lidded Vase
- 86 A Nice Mahogany Nest of Three Tables
- 87 Two Vintage Ladies Evening Bags
- 88 An Upholstered Small Stool
- 89 A Very Nice Oval Inlaid Mahogany Two Handled Tray
- 90 A Victorian Walnut Oval Shaped Pembroke Table
- 91 A Nice Pair of Bronzed Based Table Lamps with Lustre Shades
- 92 A Large Bronzed Standard Lamp with Lustre Shade, to Match Above
- 93 A Very Nice Inlaid Writing Box
- 94 A Brass Based Oil Lamp with Painted Bowl
- 95 A Nice Sized Inlaid Mahogany Shaped Front Sideboard
- 96 An Unusual Pair of Hand Painted and Decorated Bird Vases
- 97 A Victorian Mahogany Square Top Table, Centre Drawer
- 98 A Brass Standard lamp and Shade
- 99 A Lot of Three Staffordshire Dogs
- 100 A Corinthian Pillar Electrified Oil Lamp, Ruby Bowl and Shade
- 101 A Large Framed Tapestry
- 102 A Good Large Framed Tapestry
- 103 A Large Glass Paperweight
- 104 An Old Foley 'Chinese Rose' Circular Plate
- 105 A Gilted Side Table, Faux Marble Top and Porcelain Panels
- 106 A Doulton Jug, Handpainted Vase and Victorian Mug
- 107 A Very Nice Inlaid Mahogany Fall Front Coal Scuttle
- 108 Two Small Staffordshire Figurines
- 109 A Good Mahogany Turned and Carved Pedestal
- 110 An Oil Painting 'Strolling on the Beach' - Hugh McIlfratrick
- 111 A Brass Oil Lamp Hand Painted Bowl and Orange Shade
- 112 A Royal Doulton Figurine 'First Steps'
- 113 A Figurine of a German Shepherd a/f
- 114 A Very Nice Victorian Walnut Drop Leaf Small Table
- 115 A Very Fine Brass Two Handled Coal Box
- 116 A Good Tapestry Top Square Stool
- 117 A Very Fine Edwardian Inlaid Mahogany Table
- 118 A Carltonware Charger
- 119 A Small Mahogany Sutherland Table
- 120 A Brass Inlaid Turn Over Leaf Rosewood Tea Table
- 121 A Large Watercolour 'Lough Anure, Co.Donegal' - G W Morrison
- 122 A Victorian Mahogany Dressing Mirror on Stand
- 123 A Ceramic Lidded Basket and a Dresden Vase
- 124 A Regency Fine Art Figurine 'The Shepherd'
- 125 A Very Nice Shaped Front Marble Topped Chest
- 126 A Very Good Pair of Victorian Hall Chairs
- 127 A Brass Pillar Oil Lamp, Ruby Bowl and a Coloured Shade
- 128 A Nice Shaped Front Two Drawer Hall Table
- 129 A Limited Edition Lithograph 'Yellow Bouquet'
- 130 A Very Nice Oil Painting 'A Good Days Shoot' - Roy Gaston
- 131 A Nice Circular Occasional table, Centre Drawer
- 132 A Very Fine Inlaid Miniature Chest of Three Drawers
- 133 A Very Fine Mother of Pearl Jewellery box, Fitted Interior
- 134 A Very Good Floor Rug
- 135 A Crystal and Silver Mounted Ships Decanter
- 136 A Very Nice Brass 'Le Marchand de Plaiser' Figurine on Marble Base
- 137 A Waterford Crystal Mantle Clock



- 138 A Very Nice Bronzed Figurine - L M Lafuente
- 139 Two Small Royal Doulton Figurines 'Janet' and 'Tinkle Bell'
- 140 A Gilted Metal Based Centre Table, with Onyx Top
- 141 A Tall Corinthian Pillar Oil Lamp, Hand Painted Bowl and Etched Shade
- 142 A 'La-Reine' Lidded Decorated Vase
- 143 A Small Circular Tapestry Top Stool
- 144 A Shaped Front Occasional Table
- 145 A Very Nice Inlaid Shaped Side Occasional Table, Gilt Mounts
- 146 A Brass Pillar Oil Lamp Ruby Bowl and Shade
- 147 Six Small Waterford Crystal Tumblers
- 148 Six Waterford Wine Glasses
- 149 A Green Decanter and Three Green Bottles
- 150 A Very Good Mahogany Two Door linen Press, Drawers Below
- 151 A Royal Doulton Figurine 'Autumn Breezes'
- 152 A Royal Doulton Figurine 'Southern Belle'
- 153 A Royal Doulton Figurine 'Flowers of Love'
- 154 A Nice Circular Mahogany Stool
- 155 A Mahogany Framed Firescreen Hand Crafted Panel
- 156 A Pair of Staffordshire Dogs
- 157 A Very Nice Edwardian Mahogany Piano / Dressing Table Stool
- 158 A Circular Lidded Decorated Bowl
- 159 An Oval Mahogany Occasional Georgian Table
- 160 An Oil Painting 'Sea and Landscape' - Charles McAuley
- 161 A Large Oil Painting 'Winter Trees River Dunn' - R Cochrane
- 162 A Nice Gilted Upholstered Stool
- 163 A Nice Pair of Baluster Shaped Table Lamps and Shades
- 164 A Large Figurine of a 'Seated Lady'
- 165 An Early Victorian Mahogany Side Table
- 166 A Large Circular Fish Bowl on a Hardwood Stand
- 167 Three Pieces of Masons Ironstone Ware
- 168 A Nice Sized Victorian Drop Leaf Small Table
- 169 A Nice Early Upholstered Hardwood Framed Stool
- 170 A Nice Shaped Front Mahogany Console Table
- 171 A Very Good Gingerbread Clock
- 172 A Royal Doulton Figurine 'Babie' and Another Figurine
- 173 A Paragon Bone China Teaset
- 174 A Royal Albert 'Old Country Rose' Teaset
- 175 Three Old Glass Mineral Bottles
- 176 Two Old Earthenware Beer Bottles, 'H O' Kane Ballymoney'
- 177 A Framed Oil Painting 'Summertime, Castlerock' - William Cunningham
- 178 A Nice Bevelled Glass Gilt Mounted Wall Mirror
- 179 A Button Backed Upholstered Armchair a/f
- 180 A Very Fine Mother of Pearl Inlaid Writing Box
- 181 A Mahogany Wingbacked Upholstered Chair
- 182 A Very Fine Brass Telescope on Stand in its Original Box, P Carpenter, Regent Street, London
- 183 A Nice Pair of Victorian Mahogany Ballon Back Chairs
- 184 A Single Bar Back Victorian Chair
- 185 A Square Top Mahogany Breakfast Table on Centre Pedestal
- 186 A Mahogany Mirror Backed Fall Front Coal Cabinet
- 187 A Corinthian Pillar Oil Lamp, Ruby Bowl and Etched Shade
- 188 A Small Shaped Front Mahogany Chest of Three Drawers
- 189 A Very Nice Mother of Pearl Handled Set of Dessert Knives and Forks
- 190 A Very Large Royal Albert 'Old Country Rose' Teaset and Other Pieces
- 191 A Large Upholstered Hardwood Footstool, Spiral Legs
- 192 A Bottle of Bells Scotch Whisky
- 193 A Very Good Victorian Mahogany Dressing Mirror on Stand
- 194 A Brass Pillar Oil Lamp, Clear Glass Bowl and Shade
- 195 An Oil Painting 'The Trout Stream' - R Cochrane
- 196 A Nice Pine Kneehole Double Pedestal Desk
- 197 A Brass Pillar Oil Lamp, Hand Painted Bowl and Etched Green Glass Shade
- 198 A Slimline Mahogany Drop Leaf Coffee Table
- 199 An Austin Figurine 'Free Spirit'
- 200 A Large Gouache 'Heading Out' - Markey Robinson
- 201 A Good Rectangular Floor Rug



- 202 A Framed Oil Painting 'Moonlit Shore' - J P ooney
- 203 A Gilt Framed Oil Painting 'Springtime Under Slemish' - David Overend
- 204 Two Melbaware Ceramic Horses
- 205 Two Heavy Horse Figurines
- 206 A Royal Standard Bone China Teaset
- 207 A Heavy Crystal Ashtray and Five Wine Glasses
- 208 A 'Shorter Bros' Fisherman Tankard
- 209 A 'Wood & Son' Dragon Teapot
- 209a A Crown Devon Figurine 'Supreme Again'
- 210 A Very Nice and Unusual Brass Oil Lamp with Ruby Shade on Footed Brass Stand
- 211 A Beswick Figurine of a Horse a/f and Two Other Horse Figurines
- 212 A Pokerwork Stool
- 213 A Nice Plantstand
- 214 An Oak Corner Cupboard, Leaded Glass Doors
- 215 A Corgi Car Transporter and Four Other Model Cars
- 216 A Pair of Staffordshire Dogs
- 217 A Leather Gun Case
- 218 An Unused Collectors Cabinet
- 219 A Ceramonial Carved Paddle
- 220 A Very Nice WWI Sword and Scabbard, Belt etc
- 221 A Small Mahogany Two Seater Settee, For Restoration
- 222 An Oil Painting 'The Young One' - Noel Shaw
- 223 A Watercolour 'Kilarney' - Roland Hill
- 224 An Oil Painting 'North Antrim Coast' - H J Foy
- 225 An Oil Painting 'The Glens' - Maurice Orr
- 226 A Mahogany Dressing Mirror on Stand
- 227 A Large Sundry Lot of Ceramics etc
- 228 A Royal Albert 'Old Country Rose' Coffee Set
- 229 A Jug and Basin Set, Lidded Casket etc
- 230 A Very Nice Modern Swivel chair and Matching Stool
- 231 A Silver Plated Candleabra and a Collection of Cutlery
- 232 A Watercolour 'North Antrim Coast' - G C Nash
- 233 A Watercolour 'Afternoon Stroll' Signed
- 234 A Framed Print 'North Antrim Coast' - Sam McLarnon
- 235 A Nice Shaped Side Burr Walnut Sewing Box
- 236 A Very Nice Pair of Three Drawer Bedside Cabinets
- 237 A Lot of Six Nice Cyrstal Tumblers
- 238 A Nice Old Horn Gramophone and a Collection of Records
- 239 A Gilt Framed Bevelled Glass Overmantle
- 240 A Set of Three Limited Edition 'Lionel Bailey' Figurines
- 241 A Set of Three Limited Edition 'Lionel Bailey' Figurines
- 242 A Limited Edition 'Lionel Bailey' Figurine of a Fish
- 243 A Limited Edition 'Lionel Bailey' Figurine of a Circus Horse
- 244 A Crystal Decanter, Vase and Two Crystal Canes
- 245 A Crystal Ice Bucket and Two Crystal Decanters
- 246 A Crystal Vase, Decanter and a Lidded Jar
- 247 An Unusual Footed Two Handled Decorated Vase
- 248 A Large Gold Japanese Vase
- 249 A Mahogany Cased Striking Mantle Clock
- 250 A Large Gilt Framed Bevelled Glass Wall Mirror / Overmantle
- 251 A Noritake Bowl
- 252 A Very Nice Onyx Four Pillar Mantle Clock
- 253 A Panda Flower Pot
- 254 A Large Two Handled Slipware Vase
- 255 A Brass Pillar Oil Lamp Coloured Bowl and Etched Shade
- 256 An Oil Painting 'Ballycastle Beach' - Colette Daly
- 257 Two Large Pairs of Royal Worcester Palissy Ware Plates
- 258 A Large Collection of Royal Albert 'Old Country Rose' Ware
- 259 A Very Good Pentax Camera, it's Case and a Book
- 260 A Watercolour 'Fairhead' - S Forth
- 261 A Set of Seven Early 'Ye Old English' Grovener China Cups and Saucers
- 262 A Tyrone Crystal Glass Bowl
- 263 A Galway Crystal Glass Bowl
- 264 A Watercolour 'Thatched Cottages' - A McVicker
- 265 A Watercolour 'Seneril Road, Bushmills' - Leslie
- 266 An Upholstered Tub Chair



167



168



170



171



177



178



179



180



182



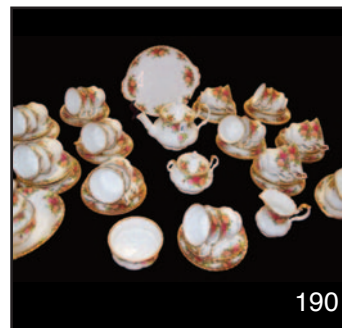
183



185



187



190



195



198



199



200



202



204



205



209



210

- 267 A Nice Set of Three Oval Framed Prints
- 268 A Nice Walnut Shaped Front Hall Table
- 269 An Upholstered Double End Couch
- 270 A Very Good Three Piece Leather Suite
- 271 A Matching Two Seater Settee
- 272 A Nice Framed 'Still Life' Picture in Carved Frame
- 273 A Pair of Matching Walnut Corner Tables
- 274 A Pine Cased Longcase Clock, Painted Arch Dial
- 275 A Very Good Victorian Mahogany Two Door Bookcase, Cupboards Below
- 276 A Kidney Shaped Small Table, Two Drawers
- 277 A Circular Glass Table, Metal Decorated Base
- 278 A Large Watercolour 'Home with the Turf' - Bobbie Anderson
- 279 A Nice Tall Slimline Six Shelf Display Cabinet
- 280 A Very Nice Mahogany Carved Two Door Display Cabinet
- 281 A Royal Doulton Figurine 'Fragrance'
- 282 A Small Royal Doulton Figurine 'Almost Grown' and Two Small Ceramic Bowls
- 283 A Royal Doulton Figurine 'Ninette'
- 284 A Royal Doulton Figurine 'Denise'
- 285 Four Old Chemist Bottles
- 286 A Small Early Royal Doulton Figurine 'June' and Another Figurine
- 287 An Early Royal Doulton Figurine 'Janet'
- 288 A Set of Four Royal Doulton Character Figurines
- 289 An Early Royal Doulton Figurine 'Polly Peachum Beggars Opera'
- 290 A Royal Doulton Figurine 'Autumn'
- 291 A large Circular Moorcroft Bowl a/f
- 292 An Arte Romera Figurine 'Rainy Day'
- 293 A Very Unusual German Two Handled Lidded Punch Bowl
- 294 Two Belleek Flower Encrusted Vases
- 295 A Watercolour 'The Thames at Grays, Evening' - Vivian Pitchforth
- 296 An Oil Painting 'Carrick-a- Rede Rope Bridge' - Colette Daly
- 297 A Good Carved Back Mahogany Hall Chair
- 298 An Upholstered Button Back Single Chair
- 299 A Tall Ceramic Vase
- 300 A Very Good Mahogany Framed Bevelled Glass Dressing Mirror on Stand
- 301 A Good Inlaid Mahogany Sofa Table
- 302 An Upholstered Button Back Single Chair
- 303 A Large Gilt Framed Bevelled Glass Mirror / Overmantle
- 304 A Very Nice Set of Three Bound Volumes 'The Complete Collection of Calvin & Hobbs
- 305 A Good Rocking Horse on Stand
- 306 A Nice Upholstered Parker Knoll Armchair
- 307 A Mahogany Firescreen / Tapestry Panel
- 308 A Very Good Large Set of Royal Albert 'Old Country Rose'
- 309 An Oil Painting 'On the Beach' - Michelle
- 310 A Framed Watercolour 'Whiterocks, Portrush' - J W Carey
- 311 A Beswick Figurine of a German Shepherd Dog and a Collection of Other Figurines
- 312 Two Pieces of Ruby Glass and a Continental Three Legged Pot
- 313 A Lot of Five Beswick Figurines and Other Horse Figurines a/f
- 314 A Gilt Framed Picture 'Ring a Ring a Rosies'
- 315 A Very Nice Shaped Front Walnut Chest of Six Drawers
- 316 A Beswick Horse Figurine and Others a/f
- 317 A Cast Iron and Brass Stand
- 318 A Nice Pair of Small Inlaid Occasional Tables, Gilt Mounts
- 319 A Very Good Heavy Circular Brass Flower Pot
- 320 A Very Nice English Pottery 'Cornflower' Dinner Set
- 321 A Victorian Mahogany Gallery Back Side Table, Two Drawers
- 322 A Nice Pair of Watercolours 'Sailing Boats' - Alan Whitehead
- 323 A Nicely Decorated Spinning Chair
- 324 A Nice Old Card Album
- 325 A Very Good Large Upholstered Stool
- 326 A Framed Oil Painting 'By Emerald Waters' - J P Rooney
- 327 A Gilt Framed Oil Painting 'Taking it Easy' - Noel Shaw



216



220



222



223



224



230



232



235



236



238



239



241



242



252



253



254



274



256



266

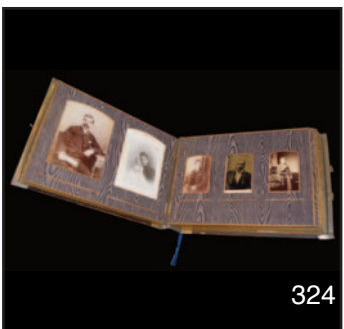
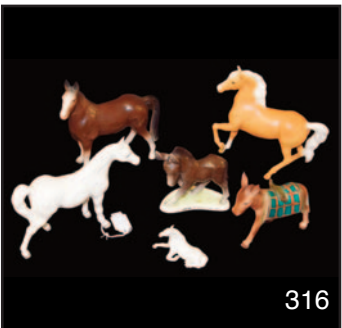
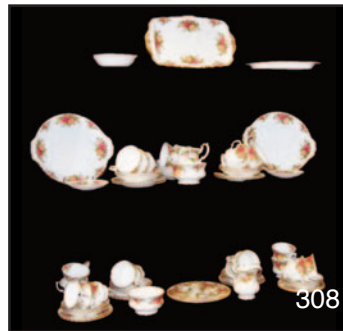


273



275

- 328 An Oil Painting 'Dunluce Castle' - A Wright
- 329 A Watercolour 'Marble Hill, Donegal' - Rowland Hill
- 330 A Watercolour 'Slemish' - Sam McLarnon
- 331 A Watercolour 'Landscape' - Sam McLarnon
- 332 A Ruby Bell and a Carafe a/f
- 333 A Nice Set of Maple Bookshelves
- 334 A Small Pair of Staffordshire Dogs
- 335 A Pair of Belleek Shamrock Pattern Vases
- 336 A Masons Ironstone Jug
- 337 A Nice Lot of Three Collectors Plates
- 338 An Oil Painting 'River Dunn' - R Cochrane
- 339 A Nice Gilt Framed Picture of a Young Lady
- 340 A Good Oak Lidded Ottoman
- 341 A Figurine Based Centrepiece
- 342 A Small Mahogany Chest of Eight Drawers
- 343 Six Shelley 'Melody' Cups and Saucers
- 344 A Nice Sized Mahogany Shelved Unit
- 345 A Yardly English Lavendar Figurine
- 346 A Royal Doulton Figurine 'Claire'
- 347 A Royal Doulton Figurine 'Top of the Hill'
- 348 An Unusual Pair of Early Figurines 'Lady and Gent'
- 349 A Large Hummel Figurine 'Best Friends'
- 350 A Hummel Figurine 'Boy with Umbrella'
- 351 A Hummel Figurine 'The Gardner'
- 352 A Crystal Jug and Two Crystal Baskets
- 353 A Nice Copper Framed Bevelled Glass Wall Mirror
- 354 A Very Good Oynx Plantstand
- 355 A Large Fish Bowl in the Form of a Planter
- 356 An Oak Framed Single Chair
- 357 An Early old Staffordshire Flatback
- 358 A Good Fish Kettle
- 359 A Georgian Mahogany Bedside Cabinet
- 360 A Very Nice Victorian Mahogany Mirror with Carved Top
- 361 An Octagonal Oak Framed Bevelled Glass Wall Mirror
- 362 A Galway Crystal Cross
- 363 A Very Nice Victorian Rosewood Inlaid Dressing Table Box
- 364 A Circlar Brass Lidded Bucket
- 365 A Nice Carved Front Mahogany 'D' End Hall / Side Table
- 366 A Lot of Three Nice Imari Plates
- 367 A Very Good Victorian Mahogany Inlaid Writing Box
- 368 A Very Nice Small Mahogany Chest of Five Drawers
- 369 A Nice Oval Walnut Coffee Table
- 370 A Very Nice Gilt Wood Table With Onyx Top
- 371 A Nice Gilt Wood Upholstered Chair
- 372 A Large Gilted and Decorated Comport
- 373 A Large Gilted and Decorated Bowl
- 374 A Copper Plant Pot
- 375 A Brass Pillar Oil Lamp, Hand Painted Bowl
- 376 An Oil Painting 'Land and Seascape' - J O'Donnell
- 377 A Nice Framed Picture 'Slemish' - Martin Cooke
- 378 An Unframed Print 'Sailing Ship' - O F Morsley
- 379 A Nicely Framed Bevelled Glass Wall Mirror
- 380 An Upholstered Open Armchair
- 381 A Five Branch Chandiler
- 382 A Nice Blue Glass Hall Lantern
- 383 An Unusual Circular Three Branch Light Fitting
- 384 A Lot of Three Pen Sets and a Letter Opener
- 385 An Invicta Replica Gents Watch
- 386 A Very Nice Four Drawer Walnut Collectors Cabinet
- 387 A Lot of Commemorative Crowns etc
- 388 A Quantity of Wade Whimsies
- 389 A Bag of Miscellaneous Foreign Coins
- 390 Three Bags of Miscellaneous Coins
- 391 A Quantity of Mint Irish Stamps
- 392 A Quantity of Mint Stamps Commemorating Royal Events
- 393 A Gilbrater 'Monarchy & British Legion' Coin Set
- 394 A Gibraltar and Isle of Man and Other Coin Sets
- 395 An 'Isle of Man, Great Britain and D Day Landings' Coin Set
- 396 A 'Uk, Gibraltar and Two Isle of Man' Coin Sets
- 397 An 'Isle of Wight, Isle of Man, Gibraltar' and a 'Second World War' Coin Set
- 398 A Cased Set of 9 Assorted Proof Coins



399 Six UK Coin Sets, 1995 - 2000
 399a A Lot of 12 Christmas '50 Pence
 Coin' Cards
 400 A 1967 Gold Sovereign
 400a A 1965 Gold Sovereign
 400b A 1965 Gold Sovereign
 400c A 1958 Gold Sovereign
 400d A 1968 Gold Sovereign
 400e A 1968 Gold Sovereign
 400f A 1968 Gold Sovereign
 400g A 1968 Gold Sovereign
 400h A 1965 Gold Sovereign
 400i A 1968 Gold Sovereign
 400j A 1909 Gold Sovereign in a Gold
 Mount
 401 A 'Queen Elizabeth 1999 Guernsey'
 £5 Pound Gold Coin
 402 A 'Queen Elizabeth 1997 Guernsey'
 £5 Pound Gold Coin
 403 A Cased Set of 24 Assorted Proof
 and Other Coins
 404 A Very Nice Set of Silver Proof and
 Other Coins
 405 A Very Nice Framed Set of Silver
 Proof Coins, Badges etc
 406 Three Good Files of 'History of
 World War II' First Edition Stamp
 and Coin Sets
 407 A Very Large Five Folder Set of 1st
 Edition Stamp and Coin Sets
 408 A Very Large Card of Mainly
 Cliftonville Football Badges
 409 A Very Large Card of Mainly Celtic
 Football Badges
 410 A Very Large Card of Mainly Celtic
 and Other Foot ball Badges
 411 A Very Large Card of Mainly Celitic
 Football Badges
 412 A Card of Assorted Badges
 413 A Card of Mainly Cliftonville
 Football Badges
 414 A Large Card of Mainly Celtic
 Football Badges
 415 A Large Card of Celtic and Other
 Football Badges
 416 A Bag of Old Pennies
 417 A Box of Half Pennies
 418 Four Victorian Shillings, 1868,
 1872,1874 and 1881 & Two George
 III 1/2 Crowns
 419 A Victorian 1897 Crown
 420 A Good Silver Gents Pocket Watch,
 Maker E Lockheart, Belfast 1880
 421 A Very Nice Gents Silver Waltham
 Pocket Watch, Chester 1877
 422 An 1875 Victorian 1/2 Crown
 423 A Very Nice Silver Two Handled
 Dish, Chester 1909

424 A Very Nice Victorian Silver Tea
 Caddy, Birmingham 1899
 425 An Antique Wine Taster with 1633
 Coin Inset
 426 A Persian Silver Four Piece
 Condiment Set
 427 A Silver Spice Pot, Birmingham
 1904
 428 A Silver Vase, Birmingham 1962
 429 A Pair of Scottish Silver Spoons,
 Edinburgh 1818 / 19 William
 Cunningham
 430 A Superb Early Heavy Silver Soup
 Ladle, London 1787, George Smith
 & William Fearn
 431 A Silver Pie Server, Sheffield 1970
 432 A Superb Victorian Silver Pen Knife,
 Birmingham 1869, Jonathan Bell
 433 A Silver Desk Calendar, Birmingham
 1919
 434 A Superb Silver Art Deco Bowl ,
 Sheffield 1907 James Dixon
 435 Two Sterling Silver Pickle Forks and
 Mustard Spoon, London 1796
 436 Two Rat Tail Dessert Spoons, Dublin
 1825
 437 A Set of Bright Cut Sugar Tongs,
 Dublin Circa 1800
 438 A Silver Cream Jug, Birmingham
 1931
 439 Five Irish Dessert Spoons, Dublin
 1823
 440 A Silver Sugar Duster, Chester 1936
 441 A Set of Three Irish Silver Spoons,
 Dublin 1846, John Smyth
 442 A Silver Oval Snuff Box,
 Birmingham 1905
 443 A Silver Letter Opener, Sheffield
 1976
 444 A Rare Silver Spoon, Royal Irish
 Rifles, London 1935
 445 A Heavy Silver Key Ring, Letter 'F'
 446 A Nice Silver Shell Bowl, Caddy
 Spoon, London 1906 Frederick
 Highland
 447 A Silver Pill Box
 448 An Unusual Silver and Enamel
 Badge, Birmingham 1906
 449 A Shell Bowl Caddy Spoon, Pickle
 Fork, Dublin 1814 and Mustard
 Spoon, Edinburgh 1858
 450 A Lovely Cut Glass Silver Mounted
 Decanter with Silver Wine Label,
 Birmingham 1979
 451 An Oriental Silver Handled Walking
 Stick
 452 A Four Piece Silver Dressing Table
 Set, Birmingham 1936



328



329



330



333



338



340



341



342



348



354



357



359



360



362



363



367



370



374



377



383



385

- 453 A Silver Photograph Frame, Birmingham 1894
- 454 A Very Nice Silver Tea Strainer, London 1958
- 455 A Silver Jewellery Box, Birmingham 1920
- 456 A Superb Pair of Heavy Silver Serving Spoons, London 1848 Francis Higgins
- 457 A Cased Silver Pusher & Spoon, Sheffield 1923 / 24
- 458 A Silver Toast Rack, Sheffield 1928
- 459 A Round Photo Frame
- 460 A Superb Double Scottish Silver Photo Frame, Edinburgh 1912, Brooks & Son
- 461 Six Irish Fiddle Pattern Dessert Spoons, Circa 1811 - 1835
- 462 A Superb Early Silver Castor, London 1795, Hester Bateman
- 463 Irish Silver Tongs, Dublin 1830, Charles Marsh
- 464 An Oval Silver Photo Frame, Birmingham 1917
- 465 Three Tablespoons, London 1787
- 466 A Silver Spoon, London 1903, Two Other Spoons and a Set of Tongs
- 467 An Egg Spoon, London 1846 and a Teaspoon, Dublin Circa 1800
- 468 A George III Silver Crown Coin, 1821
- 469 A George II Silver Six Pence Coin, 1757
- 470 A Tortoise Shell Hair Clip Inlaid with Gold and Tortoise Shell Hair Pin
- 471 A Pair of 9ct Gold Cuff Links, Circa 1912, Maker Henry Griffith
- 472 A Jade Pendant on Silver Chain
- 473 An Unusual Brooch and Folding Pendant
- 474 A Very Heavy Silver Curb Bracelet
- 475 A Very Long Silver Chain
- 476 A Very Nice 9ct White Gold Tanzanite Ring
- 477 A 9ct Gold Smokey Citrine and Diamond Ring
- 478 A Heavy Silver chain, T Bar and Medal
- 479 A 9ct Gold Bangle
- 480 A Gold Emerald and Cubic Zirconia Ring
- 481 A 9ct Gold Ladies Watch with Rolled Gold Bracelet
- 482 A Nice 9ct Gold Cameo Brooch
- 483 A 9ct Gold Compact
- 484 A Silver Bangle, Chester 1958
- 485 A Very Nice 18ct Gold and Diamond 5 Stone Ring
- 486 A Nice Victorian Silver Brooch,
- 487 A Handmade Designer Silver Brooch, Set with Moss Agate
- 488 A Victorian 9ct Rose Gold Brooch, Birmingham 1899
- 489 A Superb Designer 18ct Gold and Silver Ring Set with a Pink Tourmaline, Maker Prudence & Smith
- 490 A Nice 18ct Gold Emerald and Diamond Ring
- 491 A Nice Gold Cameo Brooch
- 492 A 9ct Gold Cameo Brooch
- 493 A 14ct Gold Ruby and Diamond Bracelet
- 494 A Cased Silver Key 'On Opening of Ballywillian Church Hall, Birmingham 1932'
- 495 A Heavy Silver Ring Set with Lapis Lazuli
- 496 A Very Long Silver Chain
- 497 A Silver Chain
- 498 A Pair of 9ct Gold Cameo Earrings
- 499 A Gold Inset Watch Key
- 500 A Very Nice 18ct Gold Three Diamond (1.75ct) Ring
- 501 A Heavy Silver Buckle Ring
- 502 A Nice 9ct White Gold Diamond Ring
- 503 A Pair of Victorian Cufflinks
- 504 A Silver Bracelet
- 505 A 9ct Gold Ladies Wrist Watch
- 506 A Gold Plated Bangle, a Pendant and a Fine Chain
- 507 A Silver Chain and a Silver Stamp Holder
- 508 A Gold Plated Bracelet
- 509 A Silver Pendant and a Chain
- 510 A Box of Costume Jewellery
- 511 A Silver Model of a 'Junk' Boat
- 512 Three Nice Necklaces and Two Bracelets
- 513 A Ladies and a Gents Wrist Watch
- 514 A Silver Bangle and a Silver Bracelet



386



398



400b



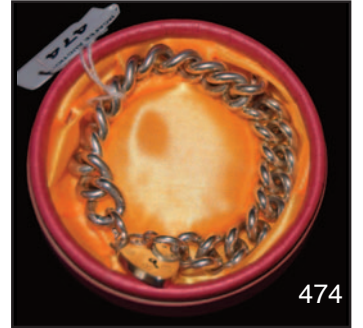
420



423



451



474



477



478



480



485



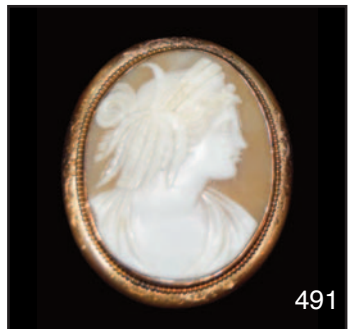
486



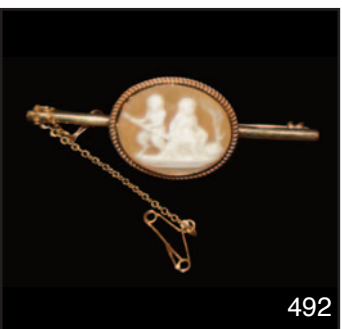
488



490



491



492



493



496



498



500



503

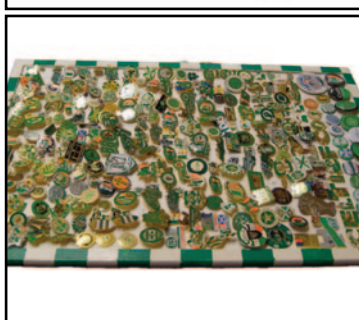


505



508

mcafee



51 Main Street, Ballymoney, BT53 6AN, Tel: (028) 2766 7669