

mrafee



Thursday 18th January @ 6:30pm

Conditions

1. The highest approved bidder shall be the purchaser. The Auctioneer reserves the right to refuse any bid, and should any dispute arise between two or more bidders, the lot or lots in dispute shall be put up again, or not, and resold at the discretion of the Auctioneer, or the auctioneer may declare the purchaser. The Auctioneer reserves the right to bid on behalf of the vendor up to and including any reserve price placed on any lot and to alter, divide, group or withdraw any lot or lots either before or at any time during the sale.
2. The Auctioneer shall regulate the bidding and no bid shall be retracted.
3. Every purchaser shall give his name and place of abode, in default of which the Auctioneers shall have the power to resell at once, or afterwards as they may think fit.
4. Each bidder shall be supposed to have seen and to be thoroughly acquainted with the contents and conditions of the lot or lots on which he may bid, and no allowance whatsoever will be made for any faults, imperfections or errors of any description. The measurements and quantities described in the Catalogue are believed to be correct and must be taken as such. The purchaser being held to have satisfied himself as to measurements and quantities and other specifications in the Catalogue before bidding, neither will the Auctioneers or the Vendors be responsible for any lot or parts of any lot after the fall of the hammer, from which time all lots purchased are at the risk of the Purchaser.
5. The Auctioneers or the Vendors do not guarantee the measurements catalogued, or the correct description, genuineness or authenticity of any lot.
6. Each purchaser shall pay the whole amount of his purchase money (Auctioneer's Commission payable by purchaser) for all lots bought by him before any lot or lots can be removed and the whole amount due from each purchaser must be absolutely paid on each day of the sale and if not paid within such time, all moneys deposited in any part payment shall be absolutely forfeited and the Auctioneers will be at liberty to resell the lot or lots or any parts thereof remaining un-removed, by Public Sale or otherwise, without giving previous notice to the purchaser and any difference or deficiencies which may arise from, such re-sale, together with all expenses attending the same shall be made good by the purchaser.
7. The lots are sold with all faults and errors of description. No allowance can be made in any case, nor will the Vendors be answerable for any deficiencies in quantities or

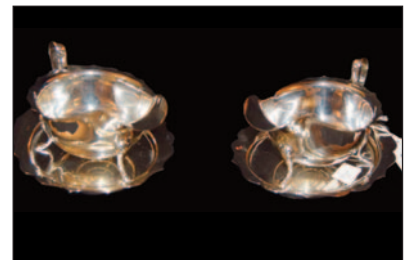
measurements when the purchaser, his agent, carrier or man employed by him has removed any part of his lot or lots from the premises. All lots purchased must be removed absolutely in the time specified and if not so removed may be resold by the Vendors.

8. The Purchaser shall be answerable for all damages occasioned by any injury or other lots, by the removal of lots purchased by them, or to the premises and to repair or pay damages to the owners of same before the removal of their lots from the premises. In the event of any persons interested in the premises, claiming the whole or any part of a lot before its removal there from or if in the Auctioneer's opinion, the removal of any lot will endanger or permanently damage any building, the Auctioneer may, by written notice to the purchaser of such lot delivered to him or his Agent, or sent by post to his abode or place of business last known to the Auctioneers, rescind the sale of any such lot. The purchaser shall then be repaid his purchase money but shall not have or make any other claim.
9. Such lot or lots as are not cleared away agreeably to the condition of this sale, will not only be forfeited and may be dealt with under last condition, but the purchaser shall pay every expense attending the removal of any such lot or lots, and the costs of making good any damage occasioned by such removal. No lots shall be removed until the day following the last day of sale.
10. If any dispute or difference arises about any lot, or any other subject, the same shall be settled by the Auctioneers, with the approval of the Vendors, whose determination shall be final and binding on all parties concerned.
11. The Auctioneers nor the Vendors do not accept any liability for personal injuries of any description sustained or caused by any reason whatsoever by any person while on the premises or otherwise.
12. Purchasers will pay 15% Auctioneers Commission (minimum fee £1) + VAT on the commission.



**‘The Mews’
37 Dundooan Road, Coleraine
Having sold the property.**

Thursday 18th January @ 6.30pm



An interesting sale of antique and general furnishings, grandfather clock, paintings, collectibles including a very nice collection of Royal Worcester, lots of crystal, a selection of writing boxes and tea caddies, porcelain, oil lamps, pieces of silver, items of jewellery, ride on mower etc.

**Viewing at ‘The Mews’
37 Dundooan Road, Coleraine, BT52 2PU**

The entire catalogue is available to view on [easyliveauctions](https://www.easyliveauction.com/mcafeeauctions/)

<https://www.easyliveauction.com/mcafeeauctions/>

A virtual tour and a short video is also available to view on www.mcafeeauctions.com

Viewing at ‘The Mews’

Wednesday 17th January 3.00 - 5.00 and 6.00 - 7.30pm and

Thursday 18th the day of sale 2.30 - 4.30pm.

Sale To Be Held Online At Our Ballymoney Auction Rooms

easyliveAuction.com

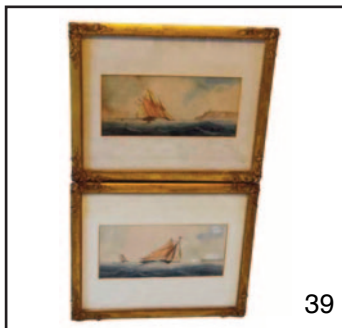
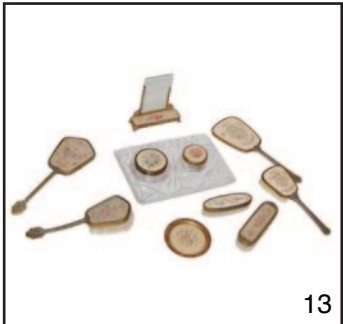
- 1 A Collection of Ceramic Fish etc
- 2 An Early Framed Samplet and a Framed Tapestry
- 3 A Small Dressing Table, Dressing Mirror and a Similar Stool
- 4 A Lloyd Loom Commode Chair
- 5 A Nice Sized Parker Knoll Armchair
- 6 A Full Length Ladies Fur Coat
- 7 A Jaffa Ladies Fur Jacket
- 8 A Small Wooden Wall Bracket
- 9 A Painted Bathroom Cabinet and a Matching Wall Cabinet
- 10 A Large Nicely Framed Oil Painting 'The Boatyard'
- 11 An Upholstered Single Chair
- 12 A Samsung Flatscreen TV
- 13 A Large Collection of Dressing Table Pieces
- 14 A Pair of Nicely Framed Prints
- 15 A Very Good Six Piece 'Washed Oak' Bedroom Suite
- 16 A Handcrafted Picture 'Dumfries & Galloway' and A Similar One 'Seashells'
- 17 A Bedside Cabinet and a Lift Top Automan
- 18 A Collection of Glass Figurines, Perfume Bottles etc
- 19 A Heavy Brass Table Lamp and Shade
- 20 A Nice Early Framed Sampler
- 21 Two Framed Handcrafted Pictures and a Circular Wall Plaque
- 22 A Single Divan Bed, It's Cushions and Covers
- 23 An Oriental Mini Four Fold Screen and A Similar Vase
- 24 A Collection of Trinket Boxes and Two Pieces of Belleek
- 25 A Slimline Pine Set of Open Bookshelves
- 26 A Heavy Brass Table Lamp and Shade
- 27 A Painted Bedside Cabinet
- 28 A Carved Oak Hall Chair
- 29 A Blue and White Vase etc
- 30 A Small Wooden and Wicker Bedside Cabinet
- 31 An Oil Painting 'Fishing Boats' in a Heavy Gilt Frame

BEDROOM 2

- 31a A Door Stop in the Form of a Dog and Two Ornamental Planters
- 32 A Mahogany Framed Single Chair
- 33 A Pair of Framed Prints
- 34 A Handcrafted Framed Picture 'Galloway' and Another 'Georgian House'
- 35 A Mahogany Standard Lamp and Shade
- 36 An Oil Painting 'Fishing Boat' and a Framed Print
- 37 An Oak Framed Octagonal Wall Mirror, Wooden Tray and a Plaque
- 38 An Angle Poise Desk Lamp
- 39 A Nice Gilt Framed Pair of Watercolours 'Sailing Boats'
- 40 A Pine Kneehole Pedestal Desk
- 41 A Very Nice Mahogany Framed Buttoned Leather Office Chair
- 42 A Circular Worcester Trinket Box and Other Pieces
- 43 An Early Framed Sampler and Two Hand Crafted Pictures
- 44 A Small Tea Trolley and a 'G Tech' Floor Sweeper
- 45 A Good Rectangular Floor Rug
- 46 A Long John Style Coffee Table
- 47 A Lot of Small Pictures
- 48 A Pair of Folding Clothes Rails
- 49 A Nice Inlaid Mahogany Open Armchair
- 50 A Mahogany Framed Dressing Mirror on Stand
- 51 The Top Three Shelves of the Bookcase
- 52 The Bottom Two Shelves of the Bookcase
- 53 A Set of Open Bookshelves
- 54 Two Framed Coloured Etchings and An Unusual Plaque 'Town Scene'

LANDING

- 55 A Nice Oval Mahogany Table
- 56 A Masons Ironstone Vase, Candlesticks etc
- 57 A Nice Baluster Shaped Table Lamp and Shade
- 58 A Ceramic Flower Planter and a Framed Handcrafted Picture



- 59 A Nice Upholstered 'Throne' Style Chair
- 60 A Nice Early Oak Three Drawer Hall Table
- 61 A Wedgewood Circular Bowl and a Small Table Lamp and Shade
- 62 A Handcrafted Wooden Lidded Bowl
- 63 An Oil Painting 'The Piano Lesson'
- 64 An Oil Painting 'A Good Drying Day' - James Ferguson
- 65 A Nice Gilt Framed Signed Print of a Young Lady
- 66 A Handcrafted Picture 'Gardens of Scotland' and Two Others 'Texas' and Missouri'
- 67 A Wicker Planter and Its Contents
- 68 A Nice Gilt Framed Arch Top Mirror
- 69 A Pair of Masons Ironstone Vases
- 70 A Nice Mahogany Longcase Clock, Circular Painted Dial, Alex Drumond, High Street, Perth
- 71 A Small Mahogany Chest of Four Long Drawers
- 72 A Brass Based Oil Lamp, Coloured Bowl and Etched Shade
- 73 A Nice Pair of Inlaid Mahogany Upholstered Chairs
- 74 A Nice Brass Bound Writing Box
- 75 An Early Carved Mahogany Hall / Side Table, Centre Drawer
- 76 A Waterford Crystal Decanter
- 77 A Nice Crystal Decanter
- 78 Two Goebel Figurines 'Reflections' and 'On the Fairway'
- 79 Two Goebel Figurines 'The Tea Dance' and 'Afternoon Tea'
- 80 A Very Fine Oil Painting 'Mountains of Mull From Salen' on Ornate Gilt Frame - James Faed Jnr 1856 -1920
- 81 A Large Hand Crafted Picture 'Scotland'
- 82 A Very Fine Inlaid Mahogany Bedside Cabinet

- 83 A Lot of Three Carved 'Bird' Figurines
- 84 A Mahogany Drop Leaf Coffee Table, Two Drawers
- 85 A Very Fine Mahogany Lidded Tea Caddy, Fitted Interior
- 86 A Large Circular 'Bombay' Crystal Bowl
- 87 A Nice Framed Print 'Mrs Robinson'
- 88 A Caithness Clock, Small Picture etc

BEDROOM 3

- 89 A Pine Towel Rail and a Bedside Cabinet
- 90 A Nice Picture in A Heavy Gilt Frame 'Sailing Boats'
- 91 A Very Nice Lidded Tea Caddy, Fitted Interior
- 92 A Painted Console Table and Matching Wall Mirror
- 93 A Nice Sized Inlaid Mahogany Canterbury
- 94 An Embossed Coal Box, Bathroom Cabinet and Upholstered Stool
- 95 A Single Mahogany Framed Chair
- 96 A Gilt Framed Wall Mirror
- 97 A Panasonic Flatscreen TV
- 98 A Sundry Lot of a Plantstand, Wall Shelf and Oval Wall Mirror
- 99 A Single Divan Bed, Its Cushions and Covers
- 100 A Nice Sized Wag at the Wall Clock
- 101 A Tall Reading Lamp and a Table Lamp Base

BEDROOM 4

- 102 A Nice Mahogany Framed Single Chair
- 103 A Nice Sized Mahogany Drop Leaf Table
- 104 A Nice Flower Arrangement in a Triple Glass Vase
- 105 A Good Five Piece Painted Wicker Bedroom Suite including Double Bed, Tall Chest, Dressing Table, Stool and Matching Mirror
- 106 An Electric Singer Sewing Machine



62



63



64



65



68



69



70



71



72



74



75



76



79



80



82



85



86



90



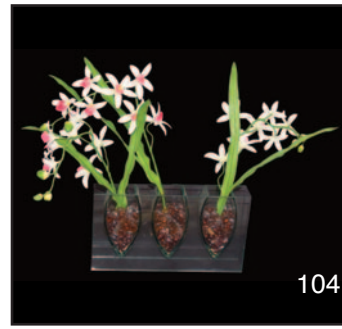
91



92



103



104

- 107 A Nice Rosewood Framed Upholstered Single Chair
- 108 An Upholstered Stool and A Small Rectangular Table
- 109 A Zennox Music Centre, a Bush Radio Cassette and an Electric Room Heater
- 110 A Mahogany Framed Open Armchair
- 111 A Corby Trouser Press and an Electric Room Heater
- 112 An Upholstered Stool and Two Wicker Baskets
- 113 A Nice Pair of Blue and White Based Table Lamps and Shades
- 114 A Nice Ceramic Two Handled Based Table Lamp and Shade
- 115 A Pair of Heavy Brass Table Lamps and Shades
- 116 A Nice Sized Inlaid Writing Box
- 117 A Glass Top Small Table
- 118 A Gilt Framed Print
- 119 A Painted Wooden Ottoman / Seat

GROUND FLOOR BEDROOM

- 120 A Very Nice Inlaid Mahogany Writing Box
- 121 A Nice Inlaid Mahogany Chest of Five Drawers
- 122 A Circular Marble Top Plantstand
- 123 An Unusual Gilt Mounted Coloured Glass Flower Holder
- 124 An Artificial Flower Arrangement in a Glass Vase
- 125 A Nice Mahogany Breakfront Bureau Display Cabinet Fitted Interior
- 126 A Very Fine Inlaid Walnut Tea Caddy, Fitted Interior
- 127 A Very Nice Brass Inlaid Sewing Box, Fitted Interior
- 128 A Good Collection of Tumblers and Wine Glasses
- 129 A Silver Plated Bowl and Strainer
- 130 A Silver Plated Jug and Sugar on a Two Handled Silver Plated Oval Tray
- 131 A Waterford Crystal Circular Bowl and a Small Waterford Dish

- 132 An Early 12 Place Setting Teaset
- 133 A Good Lot of Crystal Tumblers on a Silver Plated Tray
- 134 A Large Waterford Crystal Circular Bowl
- 135 A Nice Seven Drawer Tall Boy
- 136 A Lladro Figurine 'The Flower Arranger'
- 137 A Crystal Flower Bowl and Arrangement
- 138 A Pair of Mahogany Framed Chairs
- 139 A Nice Blue and White Flower Vase and Other Pieces
- 140 A Pine Dressing Mirror on Stand
- 141 A Pair of Small Ceramic Flower Vases
- 142 A Brass Based Table Lamp and Shade
- 143 A Ports Pottery 'The Monastery Rye' Teaset
- 144 An Unusual 'Remploy' Tea Trolley
- 145 A Single Divan Bed its Cushions and Covers
- 146 An Early Old Oak Framed Picture 'The Peace Maker'
- 147 A Villroy and Boch Tea and Dinner Set
- 148 A Good Floor Runner
- 149 A Framed Print 'The Old Strand Emporium, New Orleans'
- 150 A Good Roll of Upholstery Fabric
- 151 A Marble Topped Two Door Cupboard
- 152 A Pair of Spelter Figurines
- 153 A Collage of Wall Plaques and Two Coloured Prints
- 154 A Painted Bentwood Chair

PORCH

- 155 A Pine Plantstand
- 156 A Painted Small Table
- 157 A Handcrafted Picture and Three Coloured Prints
- 158 A Sundry Lot of Two Wooden Birds etc
- 159 A Four Piece Conservatory Suite
- 160 A Good Long Floor Runner



107



110



113



115



116



117



120



121



122



123



124



125



126



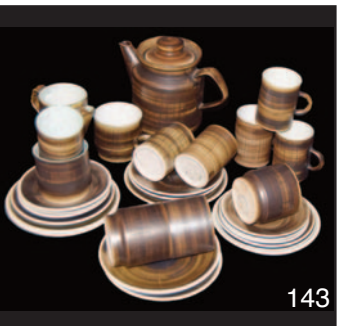
127



133



135



143



146



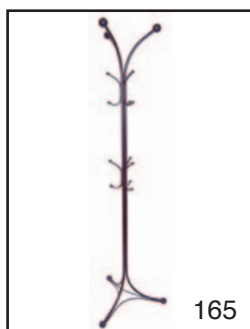
148



148



161



165



166



168

- 161 A Ceramic Umbrella Stick Stand and Contents
- 162 A Collection of Plant Holders and Plants
- 163 A Glass Top Occasional Table
- 164 An Early Framed Map of 'Monmouthshire'

ENTRANCE HALL

- 165 A Good Metal Coatstand
- 166 A Nice Shaped Barometer
- 167 A Handcrafted Picture 'Vessel'
- 168 A Gilt Framed Oval Wall Mirror
- 169 A Brass Table Lamp and Shade and a Collection of Ornaments
- 170 A Very Nice Inlaid and Carved Back Hall Chair
- 171 A Collection of Ordinance Survey Maps
- 172 A Semi Circular Hall Table
- 173 A Ceramic Stool in the Form of an Elephant
- 174 A Nice Framed Print 'Evening Sky'
- 175 A Very Nice Mahogany Turn Over Leaf Card Table
- 176 A Nice Hanging Wall Tapestry
- 177 A Tartan Floor Runner
- 178 A Long Floor Runner
- 179 A Circular Brass Tray and a Sundry lot
- 180 A Pair of Embossed Brass Candlesticks
- 181 A Large Lidded Blue and White Ginger Jar and a Similar Smaller One
- 182 A Large Lidded Blue and White Ginger Jar
- 183 An Early Old Portrush Tie and A Royal Portrush 1951 Open Championship Golf Case
- 184 A Nice Framed Print 'Croft, West Coast'
- 185 A Very Fine Inlaid Mahogany Shaped Front Hall Table
- 186 A Pair of Waterford Crystal Candlesticks and Another Pair of Candlesticks
- 187 A Nice Framed Picture 'Augusta National 16th Hole'

DRAWING ROOM

- 188 A Nice Pair of Framed Miniatures

- 189 A Framed Handcrafted Picture 'Scotlands Border Heritage' and a Framed Print
- 190 A Nice Early Mahogany Glazed Display Cabinet
- 191 A Small Marble Bust of a Young Gent
- 192 A Queen Anne Bone China Teaset and a Similar Coffee Set
- 193 A Lot of Three Royal Worcester Crested Jars
- 194 Four Small Enamel Pill Boxes and a Glasgow 1938 Caddy Spoon
- 195 A Waterford Crystal Table Lamp and Shade
- 196 An Ornamental Brass Figurine of a Pig
- 197 A Booths China Teapot and Two Comports
- 198 An Austrian Figurine of a Gent
- 199 A Royal Doulton Figurine 'Christine'
- 200 A Royal Doulton Figurine 'Fleur'
- 201 A Royal Doulton Figurine 'Lisa'
- 202 A Hummel Figurine 'Boy on Swing'
- 203 A Three Handled Loving Cup, Another and a Silver Topped Vase
- 204 A Royal Winton Small Bowl and Another
- 205 An Inlaid Nest of Three Tables
- 206 A Nice Pewter Mounted Decanter
- 207 A Belleek Jug and Sugar and a Belleek Lid
- 208 A Goebel Figurine of a Military Gent and Two Others
- 209 A Nice Pair of Brass Candlesticks and a Candle Snuffer
- 210 A Lot of Five Small Enamel Lidded jars
- 211 A Crystal Bowl of Glass Sweets
- 212 A Nice Early Jug and Basin Set
- 213 A Lot of Five Small Enamel Lidded Jars
- 214 A Nice Lot of Two Crystal Decanters



173



174



175



176



178



180



181



183



184



185



187



188



190



193



195



198



200



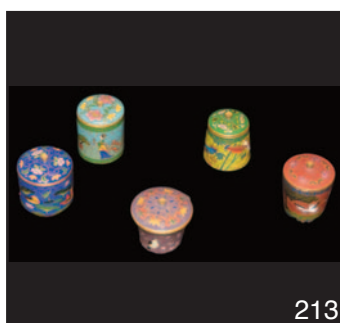
206



209



212



213



215



217

- 215 A Very Fine Slimline Mahogany Sutherland Table
- 216 A Ceramic Wall Bracket and a Ceramic Figurine
- 217 A Pair of Crystal Candlesticks, Another and a Lot of Small Dishes
- 218 A Nice Decorated Occasional Table
- 219 An Oval Upholstered Footstool
- 220 A Nice Gilt Framed Wall Mirror
- 221 A Small Inlaid Mahogany Sutherland Table
- 222 A Collection of Etched Glass and Other Tumblers
- 223 A Good Suite of 20 Crystal Wine Glasses, Two Sizes
- 224 A Lot of Eight Tall Crystal Glasses
- 225 A Heavy Crystal Decanter
- 226 A Lot of Four Crystal and Six Coloured Glass Sundae Dishes
- 227 A Three Piece Silver Plated Tea Service
- 228 A Very Fine Astragal Glazed Corner Display Cabinet
- 229 A Three Seater Upholstered Settee, A Matching Two Seater Settee and Its Cushions
- 230 A Nice Framed Crystoleum 'Keeping an Eye'
- 231 A Nice Pair of Gilted Wall Brackets
- 232 A Part Royal Doulton 'Malvern' Tea and Dinner Set
- 233 A Silver Plated Teapot, Comport and A Hand Fan
- 234 A Villeroy and Boch Circular Tray and Two Other Plates
- 235 A Very Fine Hand Painted and Decorated Table Lamp Base and Shade
- 236 An Oil Painting 'Seascape'
- 237 An Oil Painting 'Brig on the South Coast' - A Glendining
- 238 A Nice Shaped Front Mahogany Two Door Side Cabinet
- 239 A Nice Fine Carved Back Upholstered Single Chair
- 240 A Nice Gilt Framed Picture of a 'Sailing Boat' - Signed
- 241 A Pair of 'Kirkcudbright' Prints
- 242 An Upholstered Rectangular Stool
- 243 A Painted Standard Lamp and Shade
- 244 A Good Framed Sampler
- 245 A Very Nice Pair of Small Shaped Front Whatnots
- 246 A Very Nice Cased Set of Dessert Knives and Forks, 'Hamilton & Inches'
- 247 A Royal Doulton Figurine 'Nanny'
- 248 A Royal Worcester Figurine 'The First Dance'
- 249 A Silver Plated Oval Tray and an Unusual Pair of Silver Plated Toasting Cups
- 250 A Very Fine Inlaid Mahogany Occasional Table
- 251 A Royal Doulton Figurine 'Lambing Time'
- 252 A Royal Worcester Figurine 'Grandmothers Dress'
- 253 A Large Watercolour 'Portballintrae' -Aylmer Armstrong
- 254 A Good Upholstered Armchair
- 255 A Large Circular Mahogany Coffee Table
- 256 A Button Backed Upholstered Amrchair and Its Cushion
- 257 An Upholstered Small Chair
- 258 A Glass Tray and a Collection of Mainly Perfume Bottles
- 259 An Upholstered Small Stool
- 260 A Nice Fine Panel Door Mahogany Corner Cupboard on Stand
- 261 An Upholstered Rectangular Stool
- 262 The Contents of the Corner Cupboard
- 263 An Interesting Collection of Fountain and Other Pens
- 264 A Very Good Limoges 'Theren' Tea and Dinner Set
- 265 A Nice Mahogany Occasional Table
- 266 A Set of Three Porcelain Figurines
- 267 A Sterling Silver and Another Picture Frame
- 268 A Handpainted Glass Vase



221



223



227



228



229



230



235



236



238



239



240



246



247



251



253



254



256



258



259



261



264



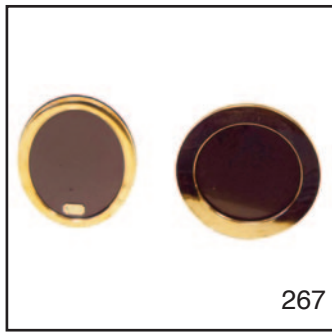
260

269 A Nice Framed Sketch 'The Aul Brig, Dumfries' - Dorothy Bruce
 270 A Very Fine Burr Walnut, Shaped Front Side Cabinet
 271 A Pair of Silver Plated Candlesticks, another Brass one etc
 272 An Inlaid Lidded Jewellery Box
 273 An Interesting Collection of Books
 274 A Set of Brass Fire Irons and Dogs
 275 A Rectangular Rug
 276 A Crystal Based Table Lamp and Shade
 277 A Moorcroft Footed Dish a/f
 278 A Silver Plated Lidded Two Handled Serving Dish and Other Pieces
 279 A Royal Worcester Circular Decorated Bowl
 280 A Very Nice Circular Mahogany Occasional Table
 281 A Very Nice Royal Worcester Hand Painted Vase 'Highland Cattle'
 282 A Very Nice Royal Worcester Hand Painted Vase 'Highland Cattle'
 283 A Very Nice Royal Worcester Hand Painted Bowl
 284 A Unusual Royal Worcester Hand Painted Jug
 285 A Very Fine Large Royal Worcester Pot Pourri
 286 A Very Nice Royal Worcester Hand Painted Two Handled Small Vase
 287 A Very Nice Royal Worcester Hand Painted Small Jug
 288 A Very Nice Royal Worcester Hand Painted Small Tankard
 289 A Very Nice Royal Worcester Hand Painted Circular Bowl
 290 A Very Nice Royal Worcester Hand Painted and Gilted Two Handled Vase
 291 A Very Nice Royal Worcester Gilted and Decorated Two Handled Vase
 292 A Very Nice Pair of Royal Worcester Hand Painted and Gilted Plates

293 A Royal Worcester Hand Painted and Gilted Flatback Jug
 294 A Lidded Royal Worcester Circular Box
 295 A Royal Worcester Shell Shell Dish
 296 A Royal Worcester Hand Painted Small Vase 'Pheasants'
 297 A Royal Worcester Hand Painted Jug
 298 A Royal Worcester Hand Painted Bud Base
 299 A Royal Worcester Candle Snuffer
 300 A Nice Worcester Lidded 'Pheasant' Circular Bowl
 300a A Large Glass and Brass, Two Door, Five Shelf, Display Cabinet
 301 A Nice Worcester Circular Bowl
 302 A Nice Worcester Circular Small Bowl
 303 A Very Good Shelf of Perfume Bottles, Paper Weights etc
 304 Two Shelf Lots Assorted Collectibles, Ceramics etc
 305 A Large Modern Picture and a Reading Lamp
KITCHEN
 306 A Circular Extending Table and Four Matching Chairs
 307 A Very Nice Royal Albert Bone China Teaset
 308 An Early Court China Teaset
 309 A Three Wicker Basket Small Unit
 310 A Set of Three Handcrafted Pictures
 310a A Nice Teak Side Cabinet
 310b An Indesit Washing Machine
 311 A Good Gilt Framed Wall Mirror
 312 A Very Nice Sized Armchair
 313 A Watercolour 'Sand Dunes' - Midge Thomas
 314 A Very Nice Framed Large Print
 315 A Good Windsor Style Armchair
 316 A Good Collection of Crystal
 317 A Piquot Coffee Pot, Tea Pot etc
 318 A Large Circular Spode Platter and Three Matching Dishes



265



267



268



270



274



276



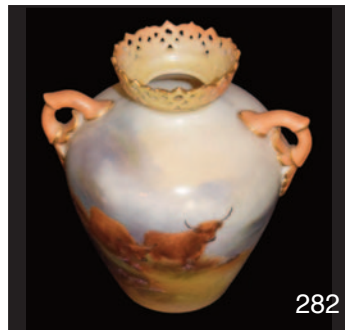
278



279



281



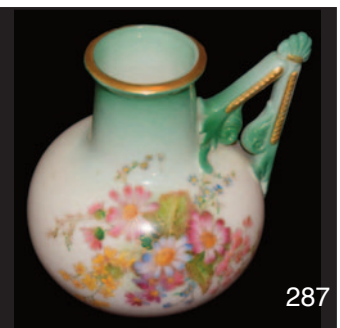
282



284



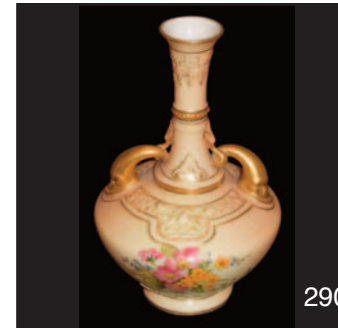
285



287



289



290



292



293



295



296



297



300a



306



308



310a

- 319 A Masons Ironstone Bowl,
Early Jug etc
- 320 A Good Collection of Crystal
- 320a A Good Microwave
- 321 A Part Blue and White Teaset
and Other Pieces
- 322 A Cased Set of Bone Handled
Cutlery
- 323 A Cased Set of Wooden
Handled Cutlery
- 324 A Glass Circular Fruit Bowl,
Platter and Two Vases
- 324a A Villeroy and Boch Vase
and a Silver Plated Oval
Gallery Tray
- 324b A Glass Fruit Bowl with Silver
Plate Rim and a Circular
Lidded Bowl
- 325 A Lot of Four Temple Bushmills
Distillery Bottles
- 326 A Large Lot of Match Boxes
- 327 A Toshiba Dvd Player

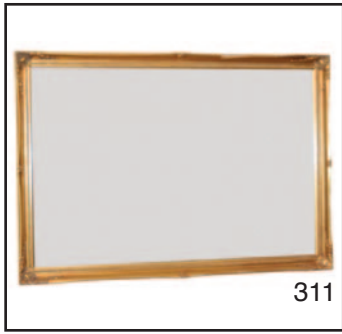
Living Area

- 328 A Large Collection of Crystal
- 329 Two Shelved Lots on the Pine
Dresser
- 330 A Very Nice Early Pine Dresser
- 331 An Oak Cased Barometer
- 332 A Baluster Style Table Lamp
and Shade
- 333 A Pair of Brass Candlesticks
and Other Pieces
- 334 A Mahogany Nest of Three
Tables
- 335 An Embossed Brass Stick
Stand and an Old Mincer
- 336 An Oak Cased Mantle Clock
- 337 A Good Shelf Lot
- 338 A Framed Coloured Etching
'North Bridge Street'
- 339 A Handcrafted Picture and A
Framed Sampler
- 340 A Good Upholstered Corner
Settee
- 341 A Watercolour 'Evening Near
Dunfanaghy' - Aylmer
Armstrong
- 342 A Watercolour 'Ramore Head,
From Portstewart' - Aylmer
Armstrong
- 343 A Watercolour 'The River Bann,
at Crannagh' - Aylmer
Armstrong

- 344 A Watercolour 'Portstewart' -
Aylmer Armstrong
- 345 A Royal Worcester Two
Handled Platter and Other Ware
- 346 A Good Reclining Armchair
- 347 A Good Shelved Lot of Pottery
- 348 A Nice Parker Knoll Armchair
- 349 A Ceramic Umbrella / Stick
Stand
- 350 A Good Collection of
Portmeirion Ware
- 351 A Good Useful Coffee Table and
a Small Storage Unit
- 352 A Rectangular Floor Rug
- 353 A Large Lot of Platters and
Plates
- 354 A Drainastim Pro Machine
- 355 A Watercolour 'Desert Scene'
- 356 A Lot of Two Hurricane Style
Lamps
- 357 A Handcrafted Picture 'Norther
Ireland' and another 'Craigievar
Castle'
- 358 A Walnut Fall Front Writing
Bureau
- 359 A Seiko Wrist Watch and Two
Cufflink Sets and Brooch
- 360 A Small Inlaid Box of Cufflinks
and Tiepins
- 361 A Lot of Silver Topped Perfume
Bottles
- 362 A Lot of Silver and Other
Cutlery
- 363 A Set of Bone Handled Knives
- 364 A Small Silver Trophy, Pickle
Fork, Toast Rack etc
- 365 A Tray of Mainly Collectors
Spoons
- 366 A Good Silver Plated Set of
Cutlery
- 367 A Bag of Assorted Coinage
- 368 A Collection of Old Paper Notes
- 369 A Good Old Plough - **Withdrawn**
- 370 A Good Old Grubber - **Withdrawn**
- 371 Two Old Oak Tables
- 372 A Honda 3011 Ride on Mower
- 373 A Garden Care Power Drive
Lawnmower
- 374 A Pair of Nice Still Life Prints
- 375 A Box of Assorted Cutlery
- 376 An Old Garden Bench
- 377 A Very Nice Silver Photo
Framed, Birmingham 1921



310b



311



312



315



320a



322



323



330



331



340



338



341



342



344



349



350



354



358



360



361



363



364

- 378 A Very Rare Scottish Provincial Ladle, Dundee Circa 1809 David Manson
- 379 An Irish Silver Rats Tail Spoon, Dublin 1825 William Cummins
- 380 A Set of Three Early Bright Cut Spoons, Dublin Circa 1775, John Pittar
- 381 A Superb Rare Silver Snuff Box, Chester 1938
- 382 A Good Set of Six Very Early Irish Bright Cut Spoons, Dublin Circa 1770, John Locker
- 383 A Silver Mustard Pot, Chester 1915
- 384 A Solid Silver Viking Long Boat Figurine
- 385 A Rare Silver Double Sovereign Case, Stamp Holder, Chester 1908, Walker and Hall
- 386 An Art Deco Silver Mustard Pot and Spoon, Birmingham 1935 Huken & Heath
- 387 A Silver Caddy Spoon
- 388 A Nice Silver Stamp Envelope Chest, 1914, Albert Jenkins
- 389 A Very Rare Pair of Scottish Provincial Silver Serving Spoons, Perth Circa 1820, Maker Robert Keay
- 390 A Heavy Silver and Enamel Cigarette case, Birmingham 1934, Goldsmiths and Silversmiths
- 391 A Nice Heavy Silver Snuff Box, Birmingham 1965
- 392 A Pair of Irish Silver Tongs, Dublin 1830, Charles Marsh
- 393 A Cased Set of Silver Plated Teaspoons and Tongs
- 394 A Very Nice Silver Cased Condiment Set, Birmingham 1921
- 395 A Very Nice Pair of Solid Silver Sauceboats and Their Trays, Sheffield 1938
- 396 A Silver Candlestick, Sheffield 1907
- 397 A George III Silver Teaspoons and Tongs
- 398 A Superb Heavy Pair of Bright Cut Serving Spoons, 1899 & 1903, Retailed by Gibson Belfast
- 399 A Good Gents Pocket Watch
- 400 A Victorian 9ct Gold Stick Pin Set with Almadine Garnet
- 401 A 9ct Gold Garnet Pendant and Chain
- 402 A Very Good 9ct White Gold Diamond Cluster Ring
- 403 An Antique 18ct Gold Five Diamond Ring
- 404 A Large Victorian Silver and Rose Gold Brooch, Birmingham 1896
- 405 An Antique 18ct Gold Set Ring with Three Ceylon Sapphires, Birmingham 1929
- 406 A 9ct Gold Three Sided Fob
- 407 A Nice Gold Ruby and Pearl Brooch
- 408 A Victorian Silver and Rose Gold Brooch
- 409 A Large Solid Silver Locket and Silver Chain
- 410 A Superb Heavy Antique Silver Double Albert Watch Chain, Chester 1919
- 411 A Victorian Silver 1/2 Albert T Bar Bracelet, Birmingham 1897
- 412 A Superb Antique Signed Satsuma Brooch
- 413 A Silver Gilt Cluster Ring
- 414 A Large Silver Dress Ring



367



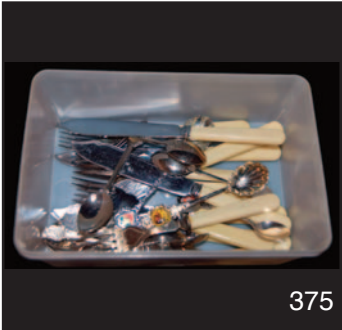
368



372



373



375



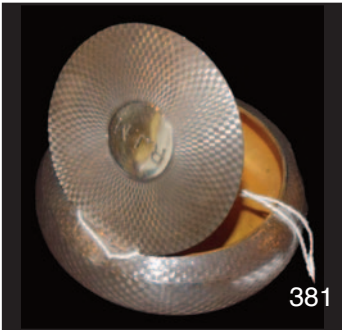
376



377



378



381



384



385



388



393



394



395



396



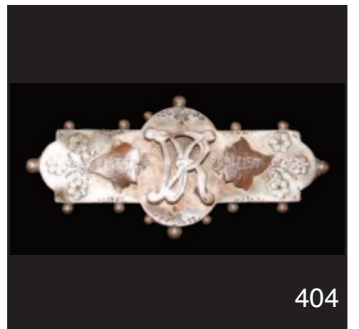
399



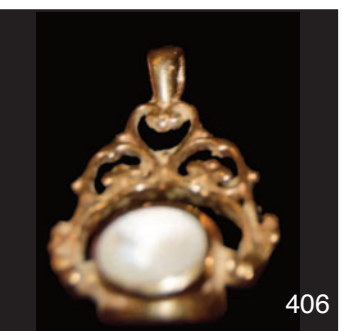
401



403



404



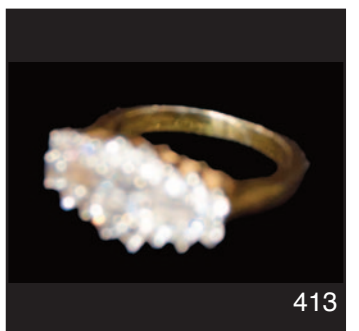
406



410



411



413

mcafee



51 Main Street, Ballymoney, BT53 6AN, Tel: (028) 2766 7669