

mcafee

Loughgall



Thursday 9th November @ 6:30pm

Conditions

1. The highest approved bidder shall be the purchaser. The Auctioneer reserves the right to refuse any bid, and should any dispute arise between two or more bidders, the lot or lots in dispute shall be put up again, or not, and resold at the discretion of the Auctioneer, or the auctioneer may declare the purchaser. The Auctioneer reserves the right to bid on behalf of the vendor up to and including any reserve price placed on any lot and to alter, divide, group or withdraw any lot or lots either before or at any time during the sale.
2. The Auctioneer shall regulate the bidding and no bid shall be retracted.
3. Every purchaser shall give his name and place of abode, in default of which the Auctioneers shall have the power to resell at once, or afterwards as they may think fit.
4. Each bidder shall be supposed to have seen and to be thoroughly acquainted with the contents and conditions of the lot or lots on which he may bid, and no allowance whatsoever will be made for any faults, imperfections or errors of any description. The measurements and quantities described in the Catalogue are believed to be correct and must be taken as such. The purchaser being held to have satisfied himself as to measurements and quantities and other specifications in the Catalogue before bidding, neither will the Auctioneers or the Vendors be responsible for any lot or parts of any lot after the fall of the hammer, from which time all lots purchased are at the risk of the Purchaser.
5. The Auctioneers or the Vendors do not guarantee the measurements catalogued, or the correct description, genuineness or authenticity of any lot.
6. Each purchaser shall pay the whole amount of his purchase money (Auctioneer's Commission payable by purchaser) for all lots bought by him before any lot or lots can be removed and the whole amount due from each purchaser must be absolutely paid on each day of the sale and if not paid within such time, all moneys deposited in any part payment shall be absolutely forfeited and the Auctioneers will be at liberty to resell the lot or lots or any parts thereof remaining un-removed, by Public Sale or otherwise, without giving previous notice to the purchaser and any difference or deficiencies which may arise from, such re-sale, together with all expenses attending the same shall be made good by the purchaser.
7. The lots are sold with all faults and errors of description. No allowance can be made in any case, nor will the Vendors be answerable for any deficiencies in quantities or

measurements when the purchaser, his agent, carrier or man employed by him has removed any part of his lot or lots from the premises. All lots purchased must be removed absolutely in the time specified and if not so removed may be resold by the Vendors.

8. The Purchaser shall be answerable for all damages occasioned by any injury or other lots, by the removal of lots purchased by them, or to the premises and to repair or pay damages to the owners of same before the removal of their lots from the premises. In the event of any persons interested in the premises, claiming the whole or any part of a lot before its removal there from or if in the Auctioneer's opinion, the removal of any lot will endanger or permanently damage any building, the Auctioneer may, by written notice to the purchaser of such lot delivered to him or his Agent, or sent by post to his abode or place of business last known to the Auctioneers, rescind the sale of any such lot. The purchaser shall then be repaid his purchase money but shall not have or make any other claim.
9. Such lot or lots as are not cleared away agreeably to the condition of this sale, will not only be forfeited and may be dealt with under last condition, but the purchaser shall pay every expense attending the removal of any such lot or lots, and the costs of making good any damage occasioned by such removal. No lots shall be removed until the day following the last day of sale.
10. If any dispute or difference arises about any lot, or any other subject, the same shall be settled by the Auctioneers, with the approval of the Vendors, whose determination shall be final and binding on all parties concerned.
11. The Auctioneers nor the Vendors do not accept any liability for personal injuries of any description sustained or caused by any reason whatsoever by any person while on the premises or otherwise.
12. Purchasers will pay 15% Auctioneers Commission (minimum fee £1) + VAT on the commission.



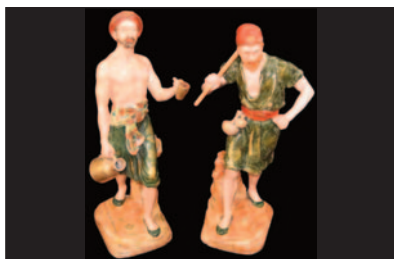
Join us for Tea

Loughgall W.I. extend a warm invitation to you to join them for refreshments in the premises adjoining 'The Court House' when you attend the morning or afternoon viewing session (10.30 - 5.00pm).



Loughgall

Fine Furnishings and Collectibles
'The Old Court House' Main Street
Thursday 9th November @ 6.30pm



An interesting and varied collection of antique and later furniture, lots of collectibles including Royal Dux, Worcester, Crown Derby, a large private collection of Waterford, Masons Ironstone, Silver, Paintings, Prints, Lladro, Clocks, Barometers, Rugs, Lamps, Large Selection of Royal Albert and other Teasets inc. 'Old Country Rose', 'Celebration', 'Moss Rose' 'Berkley' etc, Ruby, Bisque, Staffordshire and Jewellery inc Diamond Rings, Chains, Bracelets etc.

The entire catalogue is available to view on [easyliveauctions](https://www.easyliveauction.com/mcafeeauctions/)

<https://www.easyliveauction.com/mcafeeauctions/>

A virtual tour and a short video is also available to view on www.mcafeeauctions.com

Viewing Wednesday 8th November 11.00 - 1.00,
 2.00 - 5.00 and 6.30 - 8.00pm. No viewing on day of sale.

easyliveAuction.com

- 1 A Danish Royal Copenhagen Tea Caddy
- 2 A Pair of Mailing Candlesticks
- 3 A Pair of Large 19th Century Rummors
- 4 A Pair of 19th Century Engraved Glass Rummors
- 5 A Pair of 19th Century Engraved Glass Rummors
- 6 A Very Nice Hand Painted Royal Crown Derby Cabinet Cup and Saucer
- 7 A Royal Crown Derby Cigar Pattern Cup, Saucer and Plate
- 8 A 19th Century Gallery Backed Side Table
- 9 An Inlaid Rosewood Music Seat
- 10 A Pair of Blanc de Chine Table Lamps with Lotus Shaped Shades
- 11 A Victorian Glass Oil Lamp with Ruby Shade
- 12 A Large Inlaid Rosewood Overmantle
- 13 Two Tapestry Wall Hangings
- 14 An Inlaid Mahogany Occasional Chair
- 15 A Vienna Wall Clock for Restoration
- 16 A Sundry lot of Ceramics
- 17 A Signed Russian Bronze Hunting Party
- 18 A Mahogany Butler's Style Coffee Table
- 19 A Lot of Irish Books
- 20 A Mahogany Duet Stool
- 21 A Leather Button Backed Armchair
- 22 An Arts & Crafts Copper Revolving Magazine Stand
- 23 A Large Stuart Crystal Jug
- 24 Six Waterford Crystal Port Glasses
- 25 Four Tyrone Crystal Mugs
- 26 An Edwardian Inlaid Mahogany Bureau
- 27 A Lot of Cups. Saucers, Trios etc
- 28 A Figurine of a Dog and a Pair of Ornaments
- 29 A 19th Century Large Japanese Imari Vase/Stickstand
- 30 A Set of Four Victorian Cries of London Pictures with Verre Eglomise Mounts
- 31 A Ridgways Jet Ware Teapot
- 32 A Large 19th Century Cantonese Enamelled Vase
- 33 A Demi Lune Hall Table
- 34 A Ridgways Jet Ware Biscuit Barrell
- 35 A Large Hexagonal Chinese Enamelled Vase
- 36 An Antique Moulding Plane by John Moseley & Son of London
- 37 A Chinese Ginger Jar on Stand
- 38 Two 18th Century Brass Candlesticks
- 39 A 20th Century Large Hand Painted Chinese Baluster Shaped Vase
- 40 A Mahogany Glazed Mirror Backed Corner Cupboard
- 41 A Large Japanese Satsuma Vase
- 42 A Watercolour - Yeend King
- 43 An Oil Painting on Board 'The Seaweed Gatherer' - H Creict, signed and dated 1879
- 44 A Pair of Crystal and Brass Table Lamps and Shades
- 45 A Victorian Mahogany Chiffonier
- 46 A Mailing Hand Painted Bowl
- 47 A Mailing Hand Painted Bowl
- 48 A Large Hand Painted Vase
- 49 A 19th Century Hand Painted Jug with Mask Spout
- 50 A Large Gilt Framed 'Mother & Child' Print
- 51 An Embossed Copper Plaque of Dancers
- 52 A Japanese Silk Embroidery 'Rickshaw Puller'
- 53 A Royal Crown Derby Circular Dish and a Pin Tray
- 54 Two Royal Crown Derby Cups and Saucers
- 55 Five Small Cloisonne Vases
- 56 A Chinese Cloisonne Lidded Bowl and Three Eggs on Stand
- 57 Three Cloisonne Hexagonal Lidded Jars
- 58 A Mahogany Drop Flap Occasional Table
- 59 A Nice Pair of Painted Vases
- 60 A 19th Century 12 Setting Dinner Service
- 60a A Pair of 'Bird' Pictures Made From Feathers
- 61 A Superb Large Watercolour 'Lakeside Connemara' - George C Morrison R.U.A.
- 62 A Large Sunflower Art Glass Vase
- 63 A Large Victorian Hand Painted Planter
- 64 A Banker's Table Lamp
- 65 A Marble Topped Coffee Table
- 66 An Antique Brass Oil Lamp
- 67 A Brass Bed Warmer
- 68 An Inlaid Mahogany Plantsand



8



10



11



12



13



17



18



21



24



26



29



32



34



39



40



44



45



47



48



51



60



61

- 69 An Aesthetic Movement Two Handled Brass Tray, formerly Silver Plate
- 70 A Lot of Three Crystal Decanters
- 71 A Tyrone Crystal Windsor Anniversary Bowl
- 72 An Edwardian Mahogany Cylinder Bureau
- 73 A Masons Mandalay Table Lamp Base
- 74 A Masons Mandalay Table Lamp Base
- 75 A Masons Mandalay Vase
- 76 A Masons Mandalay Small Lamp
- 77 A Masons Mandalay Mantle Clock
- 78 A Masons Mandalay Planter
- 79 A Masons Mandalay Jug and a Pair of Vases
- 80 An Inlaid Mahogany Writing Desk
- 81 A Carved Giltwood Armchair
- 82 Two Mother of Pearl and Brass Sifter Spoons
- 83 A Cabinet Plate by Spode Copeland signed J Penn
- 84 A Mahogany Circular Two Tier Table
- 85 A Victorian Rosewood Double Ended Settee
- 86 A Carved Oak Hanging Corner Cabinet
- 87 Two Tapestry Wall Hangings
- 88 A Waterford Crystal Footed Vase
- 89 A Nice Pair of Decorated Table Lamps and their Shades
- 90 An Oil Painting 'Young Lady' in Heavy Gilt Frame
- 91 A Crown Derby 'Regasus' Cup and Saucer
- 92 A Carlton Armand Lustre Vase
- 93 A Mahogany Canterbury Whatnot
- 94 A Waterford Crystal Bowl, another Bowl and a Footed Comport
- 95 An Oil Painting 'Sheep in the Paddock' - Audrey Bell
- 96 An Oil Painting 'Sheep Grazing' - Audrey Bell
- 97 A Nice Masons Ironstone Table Lamp and Shade
- 98 A 19th Century Inlaid Mahogany Turn Over Leaf Tea Table
- 99 A 19th Century Coloured Engraving After David Wiltie 'The Blind Fiddler'
- 100 A Mahogany Bureau with Narrow Proportions
- 101 A Pair of Chinese Cloisonne Lidded Vases
- 102 Two 19th Century Glass Decanters, one with Ribbed Decoration (a/f).
- 103 A Mahogany Hepplewhite Style Armchair
- 104 An Oil on Canvas 'Cottage Scene' - Craneshaw
- 105 An Oil on Canvas 'Cloudy Day'
- 106 A Victorian Mahogany Sutherland Table
- 107 A Pair of Large Cantonese Ginger Jars
- 108 A Large Blue Aventurine Glass Vase
- 109 Two 19th Century Brass Toddy Kettles
- 110 An Antique Large Brass Trivet
- 111 A Victorian Copper Kettle on Brass Stand
- 112 An Antique Brass Stove Kettle
- 113 A Lot of Irish Books
- 114 A Georgian Mahogany Turn Over Leaf Card Table
- 115 A Gilt Mounted Inlaid Display Cabinet
- 116 Two Pairs of Japanese Style Vases
- 117 A Good Collection of Limoges
- 118 An Interesting Collection of Royal Albert 'Old Country Rose'
- 119 A Framed Limited Edition Print 'The Bog Cotton' 10/20.
- 120 A Large Pair of Oil Paintings 'Spanish Scenes'
- 121 An Indian Brass Horn
- 122 A John Smith's Pub Lantern
- 123 A Pair of Chinese Bronze Urns and a Bronze Candlestick
- 124 A 1st Period Belleek Platter
- 125 A Victorian Mahogany Chiffonier with Superstructure
- 126 A Belgian Wall Hanging Tapestry
- 127 An Oak Cased Wall Clock
- 128 A 19th Century Mahogany Barometer
- 129 A Pair of 19th Century Mahogany Hall Chairs
- 130 A Watercolour signed Mortimer 1920
- 131 A Nice Mahogany Occasional Table
- 132 A Gilded French Style Armchair
- 133 A Hand Painted Lidded Jar, Goblet and Vase
- 134 A Good Lot of Collectors Plates
- 135 A Pair of Noritake Plates and another Pair
- 136 A Mahogany and Gilt Lamp Table
- 137 A 1920's Mahogany Sutherland Table
- 138 A Lot of Ornamental Birds
- 139 A Mahogany Sutherland Table



80



84



85



87



88



93



95



98



100



102



104



112



114



115



120



122



125



127



128



130



132



135

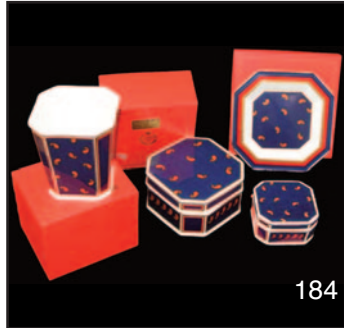


137



140

- 140 An Inlaid Rosewood Envelope Card Table
- 141 A Pair of Mahogany Nursing Chairs
- 142 A Serpentine Marble Topped Console Table
- 143 A Nice Burgess Ware Dinner Service
- 144 An Edwardian Mahogany Tub Chair
- 145 A Large Chinese Circular Hand Painted Plaque
- 146 A Large Japanese Imari Plaque
- 147 A Pair of French Hand Painted Porcelain Lamps
- 148 A Victorian Mahogany Pedestal Sideboard
- 149 A Brass Firescreen
- 150 A Very Fine Large Royal Dux Figurine
- 151 A Pair of 19th Century Scottish Nautilus Porcelain Figures Modelled as Turkish Water Carriers
- 152 A Watercolour 'The Boatyard' - Paul McClenaghan
- 153 A Watercolour 'Heading Home' - James Watson
- 154 A 19th Century Inlaid Mahogany Barometer
- 155 A Large Pair of Chinese Cloisonne Vases on Hardwood Bases
- 156 A Victorian Papier Mache Tilt Top Table
- 157 A Watercolour 'The Dunn Valley' - James Watson
- 158 A Salisbury China Tea Set
- 159 A Victorian Brass and Glass Oil Lamp and Shade
- 160 An Inlaid Mahogany Kneehole Desk
- 161 A Small Oak Cabinet
- 162 A Royal Worcester Hand Painted Planter
- 163 A Royal Doulton Figure 'Autumn Breezes'
- 164 A Royal Doulton Figure 'Slap Dash'
- 165 A Marble Topped Kidney Shaped Occasional Table
- 166 A Bisque Figure 'At the Stile'
- 167 A Set of Four Galway Crystal Glasses
- 168 A Rare Statue of Liberty Small Lamp and Shade
- 169 A Pencil Drawing 'Figure Study' - Martin Hassan
- 170 A Georgian Mahogany Bow Front Desk
- 171 An Edwardian Mahogany Envelope Card Table
- 172 A lot of Two Sashes
- 173 A Miscellaneous Lot Including Pair of Staffordshire Figurines, Orchard Gold Vase, Royal Doulton Coffee Pot and Other Items approx 17 lots
- 174 Two Pairs of 19th Century Bisque Figures
- 175 An Onyx Style Coffee Table
- 176 A Shelley Trinket Box, Vase and Trio
- 177 A Large Collection of Liliput Lane and Other Cottages
- 178 A Bavarian Twelve Piece Coffee Set
- 179 A Large Collection of Steelight Tableware
- 180 An Antique Hand Painted Tea Set
- 181 Five Pieces of Masons Ware
- 182 A Boxed Lot of Ceramics and Glass
- 183 A Green Glass Barrell Decanter
- 184 Four Pieces of Minton Ware 'Paisley Pattern' by Jean Muir
- 185 A Pair of Blue Vases, another and Six Blue and White Tumblers
- 186 A Limited Edition signed Print 'The Whins' - Jean Duncan
- 187 A Nice Pair of Gilt Framed Pictures
- 188 A Pair of Antique Staffordshire Dogs
- 189 A Pair of Caverswall Cups and Saucers
- 190 An Inlaid Rosewood Cabinet
- 191 A Lot of Robertsons Jam Novelties
- 192 A Large Pair of 19th Century Bisque Figures
- 193 A Masons Blue and White Ginger Jar and a Jug
- 194 A Large Pair of RSPB Vases by A J Rudisill
- 195 A Pair of Doulton Burslem Jugs (a/f)
- 196 A Large Richmond 'Rosetime' Bone China Coffee Set
- 197 A Watercolour 'Primroses' - Joan Kenning
- 198 A Watercolour 'Mournes Seclusion' - Miles Gaythwaite
- 199 A Gothic Style Armchair
- 200 An Oil Painting 'Riverscene' - Miles Gaythwaite
- 201 A Watercolour 'The Early Bird' - Elizabeth Doran 1995
- 202 A Lot of Silver Plated Cutlery on Glass Tray
- 203 A Georgian Style Narrow Bookcase
- 204 A Large Waterford Crystal Jug and a Crystal Bowl



- 205 A Lot of Six Waterford Crystal Sundae Dishes
- 206 A Lot of Four Waterford Crystal Sundae Dishes and Two Large Waterford Crystal Small Fruit Bowls
- 207 A Lot of Waterford Crystal and Other Jugs and Bowls
- 208 A Lot of Eleven Waterford Crystal Sundae Dishes
- 209 A Captain's Armchair
- 210 A Georgian Style Bureau
- 211 An Inlaid Mahogany Striking Mantle Clock
- 212 A Heavy Copper Desk Inkstand
- 213 A 19th Century Spindle Back Chair
- 214 A Watercolour 'Old Farm Yard at Tullyhogue' - Miles Gaythwaite
- 214a A Watercolour 'Scrabo, Co.Down' - M Slane
- 215 A Watercolour 'Ardmore Church of Ireland' - Miles Gaythwaite
- 216 A Pair of Large Coloured Prints - Gordon King
- 217 A Nice Framed Print 'Boy on Chair'
- 218 A Limited Edition signed Print 'The Fairy Glen, Rostrevor' - Camilla Brown '88
- 219 Four 19th Century Staffordshire Figures 'Fred Archer', 'The Murder of Thomas Smith' and two Others (a/f)
- 220 An Upcycled Walnut Side Cabinet
- 221 Three Assorted Boxes to Include a Marquetry Inlaid 'Book' Box, a Leather Covered Box and a Bone Box
- 222 A Regency Copper Samovar
- 223 A Lot of Rosenthal Studio Line Porcelain Teapots and a Sugar Bowl
- 224 A Crown Devon 'John Peel' Musical Jug
- 225 A Brass Mounted Corner Table
- 226 A Cottage Oil Lamp with Coloured Bowl and Shade
- 227 A 21 Piece Royal Albert 'Celebration' Tea Set
- 228 A Gilt Framed Rectangular Mirror
- 229 A Chippendale Style Mahogany Piano Stool
- 230 A 19th Century Rosewood Ladies Vanity Case
- 231 A Heavy Gilt Framed Oil Painting 'Heading Home', Monogrammed WH 1901
- 232 A Large Framed Print 'River', signed
- 233 A Pair of Gilt Framed Crystoleum Paintings 'Girl Feeding Ducks' and 'Girl and Baby'
- 234 A Large Royal Albert 'Moonlight Rose' Tea Set and Other Pieces
- 235 A Victorian Walnut Marble Topped Credenza
- 236 A Small Mahogany Open Bookcase
- 237 Two Waterford Crystal Jug and Sugars
- 238 Four Waterford Crystal Dishes etc
- 239 Six Waterford Crystal Wine Glasses
- 240 Four Waterford Crystal Wine Glasses
- 241 Six Waterford Crystal Wine Glasses
- 242 An Interesting Boxed Lot
- 243 A Large Blue and White Oval Platter
- 244 An Unusual Ice Bucket and Tong Set
- 245 An Inlaid Drop Dial Clock
- 246 A Coloured Glass Jug and a Glass Bowl
- 247 A Nice Tea Set
- 248 A Japanese Eggshell Tea Set
- 249 Two Part Oriental Tea Sets
- 250 A Very Large Collection of Royal Albert 'Old Country Rose' Ware
- 251 A Collection of Carlton Rouge 'Royale' Ware - 24 Pieces
- 252 Three Cased Lots of Goblets
- 253 Two Girls in a Meadow' Print by Pierre Auguste Renoir 1841 - 1919
- 254 A Framed Print 'His Only Pair' - By Mosani
- 255 A Chippendale Style Single Door Mahogany Display Cabinet
- 256 Two Royal Doulton Figures 'Babie' and 'Reward'
- 257 A Lladro Figure and Two Nao Figures
- 258 A Royal Doulton Figure 'Amanda' and a Coalport Figure 'Cordelia'
- 259 Six Stuart Crystal Whisky Tumblers
- 260 A Waterford Crystal Biscuit Barrell
- 261 Four Galway Crystal Brandy Glasses
- 262 Four Tudor Crystal Sundae Glasses and Six Crystal Grapefruit Glasses
- 263 An Oriental Tea Set
- 264 A Royal Albert 'Old Country Rose' 21 Piece Tea Set
- 265 A Mahogany Wall Mirror with Shell Detail
- 266 A Lot of Five Honey Pots
- 267 A Nice Noritake Tea Set and Other Pieces



209



210



211



212



214



217



220



226



230



231



232



233



234



235



241



245



255



259



270



274



275



277



285



287

- 268 A Lot of Similar Part Tea Sets
- 269 A Large Collection of Liliput Lane and Other Cottages
- 270 A Pair of Large Composite Flower Pots
- 271 A Nice Myott Pottery Part Dinner Set
- 272 A 21 Piece Royal Albert 'Berkley' Tea Set
- 273 A Brass and Glass Lamp Table
- 274 A Victorian Mahogany Tub Chair
- 275 A 1920's Mahogany Three Piece Berger Suite
- 276 A Cut Glass Bowl with Fan Cut Rim
- 277 A Victorian Pitched Pine Bedside Cabinet
- 278 A Pair of Polo Prints
- 279 A Maling Jug and Basin
- 280 A Georgian Mahogany Corner Washstand
- 281 A Sundry lot of Ceramics
- 282 A Jug and Basin Set
- 283 A Royal Albert 'Moss Rose' Tea Set with Salad Plates
- 284 A Needlework Four Fold Screen
- 285 An Oak Court Cupboard
- 286 A Watercolour 'Goats'
- 287 A 19th Century Paper Mache Side Chair
- 288 A 19th Century Mahogany Cabriole Leg Chair
- 289 A Nest of Three Mahogany Tables
- 290 A Very large Decorative Tea and Dinner Set
- 291 A Part Copeland Spode Dinner Set
- 292 A Victorian Mahogany Open Arm Cabriole Legged Chair
- 293 A Jug and Basin Set (a/f)
- 294 An Arch Topped Cheval Mirror
- 295 An Edwardian Inlaid Mahogany Bureau Bookcase
- 296 Four Waterford Crystal Sundae Dishes
- 297 Six Waterford Crystal Tumblers
- 298 Six Waterford Crystal Fruit Dishes
- 299 Four Waterford Crystal Tall Tumblers
- 300 Five Waterford Crystal Tall Tumblers and another
- 301 A Waterford Crystal Jug and Sugar
- 302 An Oval Mahogany Window Table
- 303 A Royal Albert 'Old Country Rose' 21 Piece Tea Set and Other Pieces
- 304 An Oak Open Bookcase
- 305 A Large Decorative 12 Piece Tea Set
- 306 A Large Collection of Japanese Style Vases etc
- 307 A Royal Albert 'Old Country Rose' Tea Set
- 308 An Unusual Oriental Coffee Set
- 309 A Pair of Watercolours 'Landscapes' - Audrey Bell
- 310 A Ceramic Bust of a Young Lady
- 311 A Lot of Liliput Lane Style Cottages
- 312 A Lot of Two Mantle Clocks
- 313 A Set of Six Gilted Wine Glasses
- 314 A Pair of Oil Paintings 'Stags' - signed
- 315 A Large Carved Gilt Framed Oil Painting 'Still Life'
- 316 A Nice Pair of Gilt Framed Pictures
- 317 A Fine Pastel Drawing 'Cockatoo' Peter Knuttel
- 318 A Heavy Gilt Framed Oil Painting 'Mother' - S Hunter
- 319 A Pair of Unusual Lantern Figurines
- 320 A Victorian Mahogany Duchess Dressing Table
- 321 A Four Piece Cottage Tea Service
- 322 Two Presentation Fencing Foils
- 323 Two Fencing Foils
- 324 Two Fencing Foils
- 325 A Presentation Sword
- 326 A Pair of Old Bayonets
- 327 An Oak Stick Stand
- 328 An Upholstered Inlaid Mahogany Tub Chair
- 329 A 19th Century Mahogany Pedestal Occasional Table
- 330 A Royal Albert 'Old Country Rose' Tea Set and Other Pieces
- 330a An Oil Painting 'The Poacher' - Roy Wallace
- 331 A Six Pillar Black Slate Mantle Clock
- 332 A Slimline Chest of Six Drawers
- 333 A Royal Albert Old Country Rose Tea Set
- 334 An 'Elephant' Based Coffee Table
- 335 A Tiffany Glass Lamp and Shade
- 336 An Inlaid Rosewood Side Chair
- 337 A Mahogany Framed Barometer
- 338 A Pair of 19th Century Porcelain Figures
- 339 A Royal Worcester Trefoil Dish
- 340 A Pair of Large Royal Dux Figures
- 341 A Victorian Ruby 'Jack in the Pulpit' Vase
- 342 A Victorian Vaseline 'Jack in the Pulpit' Vase



288



290



291



292



294



295



298



300



304



306



308



313



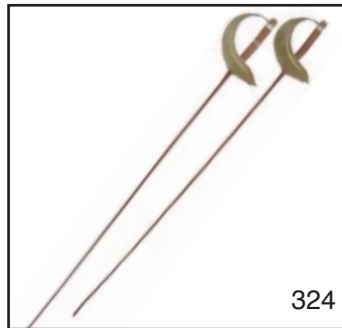
315



318



320



324



326



330



330a



332



333



337



350

- 343 A Ruby Christening Bowl with Vaseline Handle
- 344 Two 19th Century Ruby Jugs
- 345 Two 19th Century Stemmed Ruby Glasses and Two Small Tumblers
- 346 Two Mary Gregory Custard Cups and an Enamelled Ruby Glass for King Edward VII Coronation
- 347 A 19th Century Ruby Glass Bowl with Finger Handle
- 348 A Ruby Glass Bowl
- 349 A Royal Crown Derby Two Handled Dish
- 350 An Aesthetic Movement Mirror Backed Display Cabinet
- 351 A Lot of Four Large Oval Wedgwood Platters
- 352 A Pair of Oriental Tea Sets
- 353 A Royal Albert 'Old Country Rose' Coffee Set with Mugs
- 354 A Tray Top Side Table
- 355 An Early Oil Painting 'Boating' Signed
- 356 A Print 'Spring in Trevor Hill, Rostrevor' - Mervyn Patton
- 357 A Pair of Gilt Framed Prints 'Classical Cherubs'
- 358 A Large Pair of Victorian Brass Candlesticks
- 359 A Four Fold Etched Glass Photograph Frame
- 360 An Oil Painting 'Figure Study' - Martin Hassan
- 361 An Inlaid Mahogany Candle Box
- 362 A Mahogany Cased Mantle Clock
- 363 A Silver Plated Candelabra
- 364 A Lot of Three Carved African Figures
- 365 A Lot of Two Wooden Lidded Boxes
- 366 A Spelter and Ruby Epergne and a Spelter Figurine Candlestick
- 367 A Georgian Mahogany Two Over Three Chest of Drawers
- 368 A Tiffany Glass Lamp and Shade
- 369 A 1st Edition 'Craigavon Ulsterman' Book by St. John Ervine
- 370 A 1st Edition 'Ballards from Tyrone' Book by W E Marshall
- 371 A Carved Mahogany Standard Lamp
- 372 A Very Nice Gilt Framed Print 'Father & Daughter'
- 373 An Oak Nest of Tables
- 374 A Lot of Pens, Bookmarks etc
- 375 A large Brass Kettle
- 376 A Cased Set of 24 Dessert Knives and Forks
- 377 A Royal Albert 'Old Country Rose' Tea Set
- 378 A Mahogany Kidney Shaped Topped Occasional Table
- 379 A Capodimonte Figure
- 380 A Victorian Rosewood Chiffonier
- 381 A Pair of Victorian Glass Vases with Scrapwork Decoration
- 382 An Oriental Style Porcelain Table Lamp
- 383 A Very Good Oval Burr Walnut Centre/Breakfast Table on Pedestal Base
- 384 A Set of Four Mahogany Framed Dining Room Chairs
- 385 A Very Good Pair of Egyptain Figure Floor Lamps and Shades and their Bases
- 386 A Fine Silver Mounted Mallaca Walking Stick, London 1915
- 387 A Very Nice Oval Waterford Crystal Bowl
- 388 A Tall Pair of Waterford Crystal Vases
- 389 A Pair of Waterford Crystal Vases
- 390 A Pair of Waterford Crystal Vases
- 391 A Tyrone Crystal Fruit Bowl
- 392 A Lot of Four Waterford Crystal Dessert Dishes
- 393 A Set of Six Waterford Crystal Stemmed Glasses
- 394 A Tall Crystal Preserve Vase with Ornate Glass Flowers
- 395 A Nice Hand Painted Royal Worcester Jug
- 396 A Nice Hand Painted Royal Worcester Jug
- 396a A Nice Handpainted Royal Worcester Tusk Jug
- 397 A Royal Doulton Dog and a Rabbit
- 398 A Moorcroft 'Clematis' Pattern Vase
- 399 A Moorcroft 'Orchid' Pattern Ashtray
- 400 A Large Carved Lidded Chest
- 401 An Art Nouveau Set of Copper Postal Scales
- 402 A Mahogany Canterbury
- 403 A Brass Dinner Gong and Beater
- 404 A Nest of Tables
- 405 A Nice Pair of Marble Topped Bedside Cabinets



353



354



355



359



360



361



362



363



365



366



368



372



376



377



380



383



384



385



388



393



394



396



396a

- 406 A Tyrone Crystal Bowl in the Form of the Sam Magure Cup and Presentation Box
- 407 A Waterford Crystal Tray and Two Waterford Crystal Tumblers
- 408 A Very Nice Pair of Mahogany Corner Brackets
- 409 A Set of Bone Handled Knives, Bone Handled and Other Cutlery
- 410 A Very Nice Unusual Hardwood Oriental Display Stand
- 411 A Nice Carved Oak Hall Chair
- 412 A Lot of Five Royal Doulton Character Jugs
- 413 A Georgian Sheffield Silver Plated Teapot
- 414 A Victorian Silver Plated Tea Caddy
- 415 A Set of Three Silver Plated Crested Tankards
- 416 A Pair of Pewter Pint Tankards with Similar Crest
- 417 A Galway Crystal Clock and a Pair of Crystal Candlesticks
- 418 Two Cased Carved Figures etc
- 419 A Good Rectangular Floor Rug
- 420 A Good Rectangular Floor Rug
- 421 A Circular Mahogany Cased School Style Clock
- 422 A Waterford Crystal Water Jug
- 423 A Waterford Crystal Water Jug
- 424 Four Waterford Crystal Tall Tumblers
- 425 Four Large Waterford Crystal Wine Glasses
- 426 Four Large Waterford Crystal Wine Glasses
- 427 Six Tall Waterford Crystal Tumblers
- 428 Four Large Waterford Crystal Wine Glasses
- 429 Six Waterford Crystal Tall Tumblers
- 430 A Waterford Crystal Biscuit Barrell
- 431 A Crystal Biscuit Barrell, signed
- 432 A Mixed Lot of Waterford Crystal Glasses
- 433 A Waterford Crystal Footed Vase
- 434 Two Waterford Crystal Jugs and Sugars
- 435 A Queen Anne Style Wing Backed Armchair
- 436 An Upholstered Single End Couch and Its Cushions
- 437 An Early Victorian Mahogany Open Armchair
- 438 A Lot of Irish Books
- 439 A Lot of Irish Books
- 440 A 19th Century Walnut Sutherland Table
- 441 A Watercolour 'Family Day Out' - Paul McLenaghan
- 442 A Mahogany Pedestal Occasional Table
- 443 A Waterford Crystal Footed Vase and a Crystal Circular Fruit Bowl
- 444 An Oriental Copper Jug with White Metal Mounts
- 445 A Hygrometer
- 446 An Old Pair of Field Glasses and an Old Camera
- 447 A Carved Victorian Nursing Chair
- 448 Three Quality Sterling Silver Tablespoons, London 1785
- 449 A Silver Dessert Spoon, Dublin 1792 and Two Irish Teaspoons circa 1800
- 450 A Silver Table Lamp, needs rewired
- 450a A Superb Silver Cigarette Case Enamelled with a Horse Racing Scene, Birmingham 1922 James Walker
- 451 A Heavy Silver Quaich, London 1920
- 452 A Large Silver Drum Mustard Pot and Silver Spoon, Birmingham 1914
- 453 A Superb Large Scottish Silver Gravy Stuffing Spoon, Edinburgh 1838, Marshall & Son
- 454 A George III Scottish Silver Spoon, Edinburgh 1801, Robert Grierson
- 455 Two Silver Mounted Crystal Decanters, one retailed by Asprey of London
- 456 A Heavy Silver and Enamel Cigarette Case of Military Interest, Birmingham 1934, Goldsmiths & Silversmiths Ltd
- 457 A Silver Sauceboat, Birmingham 1931
- 458 A Superb Cased Silver Double Condiment Set and Spoons, London 1929, Edward Barnard & Sons
- 459 A Superb Large Irish Silver Jug, Dublin 1826, James Buckton
- 460 A Silver Cake Basket, Birmingham 1902
- 461 A Superb Rare Silver Card Case with Silver Card Ejector, London 1914, Henry Williamson
- 462 A Pair of Silver Art Nouveau Photo Frames, Birmingham 1899
- 463 A Silver Inkwell (a/f)



398



401



402



403



406



417



419



421



422



425



427



437



440



442



444



450a



451



457



458



459



460



461

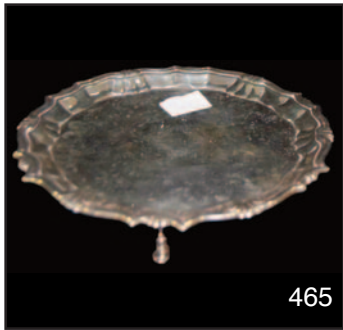


462



464

- 464 A Super Set of Six Heavy Early Irish Silver Forks, Dublin 1795/96, John Keeve
- 465 A George III Silver Card Salver, London 1749
- 466 A Silver Mounted Crystal Sugar Shaker, Birmingham 1969
- 467 An Oval Silver Dish, Birmingham 1901
- 468 A Pair of Silver Spoons, London 1820, Jonathan Hayne
- 469 A Set of Four Heavy Irish Silver Spoons, Dublin 1828, William Cummins
- 470 A Large Silver Capstan Inkwell, Birmingham 1929
- 471 A Silver Handled Page Turner , Birmingham 1881
- 472 A 19th Century Hand Painted French Porcelain Tea Caddy
- 473 A Silver Sauceboat, Dublin 1796
- 474 Three Silver Teaspoons, monogramed AC, Edinburgh Late 18th Century
- 475 A Nice Pair of Plated Servers, and a Pair of Silver Mounted Fish Servers, dated 1919
- 476 An Unusual Silver Stamp Case, Birmingham 1907
- 477 A Silver Figure Spoon, Sheffield 1954
- 478 A Cased Set of Silver 'Apostle' Spoons and Tongs
- 479 A Silver Pendant and Chain
- 480 A Nice Silver Chain
- 481 An 18ct Gold and Diamond Ring
- 482 A 9ct Gold Bracelet
- 483 A Silver Chain, T Bar and Heart Pendant
- 484 A 9ct Gold Chain
- 485 An 18ct Gold Wedding Band
- 486 A Pair of 9ct Gold Cameo Earrings
- 487 A Heavy 9ct Gold Amethyst Ring
- 488 A 9ct Gold Emerald and Diamond Cluster Ring
- 489 Two Gold Plated Chains
- 490 A Platinum Seven Stone Diamond Ring (1.56ct)
- 491 A Very Nice Gold, Diamond and Opal Brooch
- 492 A 9ct Gold Wedding Band
- 493 A 9ct Gold Brooch
- 494 A 9ct Gold Ring
- 495 A Platinum Aqua (0.90ct) and Diamond Cluster Ring (0.55ct)
- 496 A Pair of Silver Candlesticks, Birmingham 1904, Israel Sigmund Greenberg
- 497 A Pair of Silver Candlesticks, Birmingham 1904, Israel Sigmund Greenberg
- 498 An Irish Silver Spoon, Dublin 1834
- 499 A Georgian Silver Spoon, London 1764
- 500 A Lot of Six Mother of Pearl and Silver Fruit Knives
- 501 A Lot of Six Mother of Pearl and Silver Fruit Knives
- 502 A Silver Mounted Crystal Bottle, London 1904
- 503 A George III Silver Marrow Scoop Spoon
- 504 Four Irish Silver Spoons, Fiddle Pattern, Dublin 1840
- 505 Two Danish Silver 'Month of the Year' Spoons, July 1985 & July 1970
- 506 A Lot of Silver Items including Thimble, Egg Cup, Pepper Pot and Oval Dish
- 507 An 18ct Gold Platinum & Diamond Ring
- 508 A 9ct Gold Curb Link Bracelet
- 509 A 9ct Gold Diamond and Sapphire Bangle
- 510 An 18ct Ruby (2.33ct) and Diamond (0.65ct) Ring
- 511 A Silver Pendant and Chain
- 512 A 9ct Gold Diamond Ring
- 513 A Large Silver Agate Brooch
- 514 A Nice 5 Stone Ring
- 515 An Emerald (0.60ct) and Diamond (0.55ct) Deco Style Platinum Ring
- 516 An Eternity Ring
- 517 An Edwardian 18ct Gold Ceylon Sapphire and Diamond Ring, Chester 1913
- 518 A 9ct Gold Watch Chain with 1/2 Sovereign Pendant, dated 1906
- 519 Two Silver Inset Rings
- 520 2 Gold Plated Chains
- 521 A Pair of 9ct Gold Earrings
- 522 Three Silver Rings
- 523 A Silver Plate Watch Chain
- 524 A Silver Necklace
- 525 A Jewellery Box and Contents



465



467



470



476



480



481



482



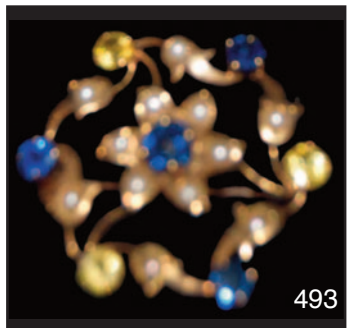
486



488



491



493



497



500



502



503



507



500



508



509



510



512

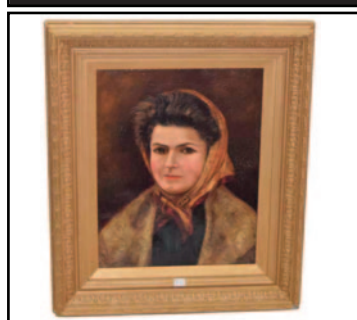
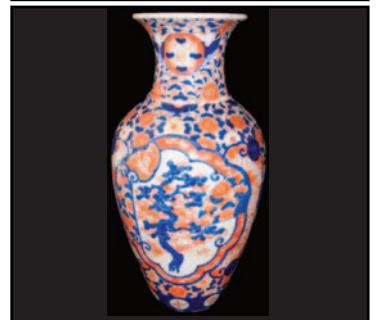


521



523

mcafee



51 Main Street, Ballymoney, BT53 6AN, Tel: (028) 2766 7669