

mrafee

**Fine
Furnishings**



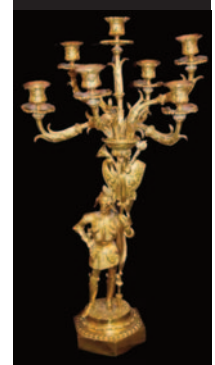
**Wednesday 27th &
Thursday 28th September @ 6.30pm**

Conditions

1. The highest approved bidder shall be the purchaser. The Auctioneer reserves the right to refuse any bid, and should any dispute arise between two or more bidders, the lot or lots in dispute shall be put up again, or not, and resold at the discretion of the Auctioneer, or the auctioneer may declare the purchaser. The Auctioneer reserves the right to bid on behalf of the vendor up to and including any reserve price placed on any lot and to alter, divide, group or withdraw any lot or lots either before or at any time during the sale.
2. The Auctioneer shall regulate the bidding and no bid shall be retracted.
3. Every purchaser shall give his name and place of abode, in default of which the Auctioneers shall have the power to resell at once, or afterwards as they may think fit.
4. Each bidder shall be supposed to have seen and to be thoroughly acquainted with the contents and conditions of the lot or lots on which he may bid, and no allowance whatsoever will be made for any faults, imperfections or errors of any description. The measurements and quantities described in the Catalogue are believed to be correct and must be taken as such. The purchaser being held to have satisfied himself as to measurements and quantities and other specifications in the Catalogue before bidding, neither will the Auctioneers or the Vendors be responsible for any lot or parts of any lot after the fall of the hammer, from which time all lots purchased are at the risk of the Purchaser.
5. The Auctioneers or the Vendors do not guarantee the measurements catalogued, or the correct description, genuineness or authenticity of any lot.
6. Each purchaser shall pay the whole amount of his purchase money (Auctioneer's Commission payable by purchaser) for all lots bought by him before any lot or lots can be removed and the whole amount due from each purchaser must be absolutely paid on each day of the sale and if not paid within such time, all moneys deposited in any part payment shall be absolutely forfeited and the Auctioneers will be at liberty to resell the lot or lots or any parts thereof remaining un-removed, by Public Sale or otherwise, without giving previous notice to the purchaser and any difference or deficiencies which may arise from, such re-sale, together with all expenses attending the same shall be made good by the purchaser.
7. The lots are sold with all faults and errors of description. No allowance can be made in any case, nor will the Vendors be answerable for any deficiencies in quantities or

measurements when the purchaser, his agent, carrier or man employed by him has removed any part of his lot or lots from the premises. All lots purchased must be removed absolutely in the time specified and if not so removed may be resold by the Vendors.

8. The Purchaser shall be answerable for all damages occasioned by any injury or other lots, by the removal of lots purchased by them, or to the premises and to repair or pay damages to the owners of same before the removal of their lots from the premises. In the event of any persons interested in the premises, claiming the whole or any part of a lot before its removal there from or if in the Auctioneer's opinion, the removal of any lot will endanger or permanently damage any building, the Auctioneer may, by written notice to the purchaser of such lot delivered to him or his Agent, or sent by post to his abode or place of business last known to the Auctioneers, rescind the sale of any such lot. The purchaser shall then be repaid his purchase money but shall not have or make any other claim.
9. Such lot or lots as are not cleared away agreeably to the condition of this sale, will not only be forfeited and may be dealt with under last condition, but the purchaser shall pay every expense attending the removal of any such lot or lots, and the costs of making good any damage occasioned by such removal. No lots shall be removed until the day following the last day of sale.
10. If any dispute or difference arises about any lot, or any other subject, the same shall be settled by the Auctioneers, with the approval of the Vendors, whose determination shall be final and binding on all parties concerned.
11. The Auctioneers nor the Vendors do not accept any liability for personal injuries of any description sustained or caused by any reason whatsoever by any person while on the premises or otherwise.
12. Purchasers will pay 15% Auctioneers Commission (minimum fee £1) + VAT on the commission.



Ballymoney

Important Two Night Sale



An important collection of antique and general furnishings, inc. display cabinets, chests, desks, tables, chairs, sideboards, couches etc, paintings inc. works by Charles Mc Auley, Maurice Wilks, Markey Robinson, Brian Ballard, Kieran McGoran, G.W Morrison, Sam McLarnon, Manson Blair, Martin Hasson, etc. Silver inc. tea service, coffee pots, trays, flatware, jugs etc, collectibles inc. Worcester, crown derby, pairs of vases, tea and coffee sets, large collection of beswick horses and riders etc. jewellery inc gold and diamond and other rings, chains, watches, brooches etc.

Other lots include floor and table lamps, collection of vintage cameras, bronzes, oil lamps, clocks inc Vienna, mantle etc, large collection of Waterford and other crystal, coins, rugs, mirrors etc. Approx 800 lots.

The entire catalogue is available to view on [easyliveauctions](https://www.easyliveauction.com/mcafeeauctions/)

<https://www.easyliveauction.com/mcafeeauctions/>

A virtual tour and a short video is also available to view on www.mcafeeauctions.com

Viewing Monday and Tuesday 25th and 26th
from 3.00 - 5.00 and 6.30 - 8.00 and Wednesday
the first day of sale from 3.00 - 5.00pm.

easyliveAuction.com



Telephone Number During Viewing & Sale
(028) 2766 7669 / 07860474956



- 1 A Set of Six Waterford Footed Crystal Glasses
- 2 A Waterford Crystal Bowl
- 3 A Good Set of Six Crystal Glasses
- 4 A Good Set of Seven Footed Waterford Crystal Glasses
- 5 A Lot of Four Tyrone Crystal Glasses
- 6 A Good Set of Six Crystal Brandy Glasses
- 7 A Lot of Six Tyrone Crystal Sundae Dishes
- 8 A Lot of Four Crystal Wine Glasses
- 9 A Very Good Lot of Small Enamel Trinket Boxes
- 10 A Good Pair of Two Handled Vases
- 11 A Good Pair of Staffordshire Dogs
- 12 A Pair of Brass Altar Candlesticks
- 13 A Pair of Wall Mounted Cupids
- 14 A Very Nice Cupid Figurine Planter
- 15 A Good Tyrone Crystal Footed Bowl
- 16 An Oil Painting 'Gossips' - J P Rooney
- 17 A Nice Victorian Mahogany Turn Over Leaf Card Table
- 18 A Slimline Double Weight Vienna Wall Clock
- 19 A Circular and Gilt Framed Convex Wall Mirror
- 20 A Very Good Carved Barometer
- 21 A Wag at the Wall Wall Clock
- 22 A Nice Sized Edwardian Mahogany Card Table
- 23 A Very Heavy Brass Based Standard Lamp and Shade
- 24 A Gibsons Pottery Planter
- 24a A Slimline Chest of Seven Drawers
- 25 A Pair of Oriental Vases
- 26 A Superb Pair of Gilt Framed Oval Tapestries
- 27 A Good Oak Cased Canteen of Cutlery
- 28 An Inlaid Mahogany Revolving Bookcase
- 29 A Mahogany Lift Top Piano Stool
- 30 A Very Nice Pair of Figurine Based Floor Lamps and Their Stands
- 31 A Nice Pair of Gilt Framed Oval Prints
- 32 A Large Oil Painting 'Pensive Moments' - B Reilly
- 33 A Gilt Framed Bevelled Glass Wall Mirror
- 34 A Walnut Chest of Four Drawers
- 35 A Very Nice Three Piece Gilted Metal Clock Set
- 36 A Nice Oval Gilt Framed Print 'At Work'
- 37 A Watercolour 'Cottages. Magilligan' - Aylmer Armstrong
- 38 A Small Inlaid Chest of Three Drawers
- 39 A Very Nice Large Jardinere on Stand and Its Contents
- 40 A Superb Pair of Blackmore Style Figurine Floor Lamps
- 41 A Superb Single Blackmore Style Figurine Floor Lamp
- 42 An Oak Cased Grandfather Clock, Battery Movement
- 43 A Nice Oil Painting 'Sunset Ballintoy Church' - Jack Wilkinson
- 44 A Very Fine Edwardian Inlaid Armchair
- 45 A Nicely Decorated Turn Over Leaf Card Table, Gilted Mounts
- 46 A Carved Mahogany Fire Surround
- 47 An Oil Painting 'The Homestead' - Miles Gaythwaite
- 48 A Very Nice Gilt Framed Picture 'On the Swing'
- 49 A Pair of Inlaid Mahogany Single Bed Ends
- 50 A Very Fine Inlaid Mahogany Oval Two Handled Tray
- 51 A Nice Edwardian Circular Mahogany Occasional Table
- 51a A Nice Upholstered Mahogany Framed Armchair
- 52 A Watercolour 'The Church Spire' - C Watson
- 53 A Matched Pair of Oak Wall Brackets
- 54 An Oil Painting 'Milking Time' - Gregory Moore
- 55 An Oil Painting 'Gathering Sticks'
- 56 An Oil Painting 'Bringing in the Hay'
- 57 Two Pairs of Gilted and Hand Painted Vases
- 58 A Very Nice Gilted and Decorated Two Branch Table Lamp, Drop Lustres
- 59 A Nice Sized Gallery Backed Inlaid Mahogany Side Table
- 60 A Victorian Mahogany Polescreen, Tapestry Panel
- 61 A Watercolour 'In the Moss' - Martin Hasson
- 62 An Oil Painting 'Seaside Living' - Desmond Munroe
- 63 A Bronzed Figurine 'At Ease'
- 64 A Nice Sized Drop Leaf Occasional Table
- 65 A Large Jouot & Angoulême Wall Clock
- 65a A Marble Top and Gilted Base Occasional Table
- 66 Two Pairs of Brass Candlesticks
- 67 A Nice Mahogany Cased Mantle Clock
- 68 An Austin Figurine 'Jogger'
- 69 A Silver Plated Tea Urm
- 70 An Oil Painting 'A Bit of a Session' - Sean White
- 70a A Circular Mahogany Plantstand
- 71 A Watercolour 'Good Drying Day' - James McKendry
- 72 A Good Sturdy Captains Chair
- 73 A Superb Large Watercolour 'Roundstone Harbour' - Richard Hayworth
- 74 An Edwardian Mahogany Oval Bevelled Glass Wall Mirror
- 75 A Good Set of Four Folding Cinema Chairs
- 76 A Mahogany Dressing Mirror on Stand
- 77 A Large Watercolour 'Sheephaven' - G W Morrison
- 78 A Fine Watercolour 'A Donegal View' - Bobbie Anderson
- 79 A Nice Sized Carved Case Spring Vienna Wall Clock
- 80 A Very Nice Ceramic Figurine 'Whispers'
- 81 A Very Nice Pair of Silver Plated Candlesticks
- 82 A Very Nice Pair of Silver Plated Candleabra
- 83 A Very Nice Victorian Mahogany Two Door Side Cabinet
- 84 A Watercolour 'Bird of Prey' - Donal McNaughton
- 85 A Mahogany Cased Double Weight Vienna Wall Clock
- 86 A Pair of Oil Paintings 'Musicians' - Sean White
- 87 A Very Nice Floor Runner
- 88 A Watercolour 'Shaded Spot'
- 89 A Royal County Down Golf Club Signed Print
- 90 A Very Large Engraved Oval Brass Tray and Its Stand
- 91 A Good Pair of Japanese Vases
- 92 A Nice Carved Mahogany Drop Leaf Table
- 93 A Gilted and Decorated Figurine Based Candle Holder
- 94 A Large Gilt Framed Print 'The Maypole Dance'
- 95 A Good Pair of Bronze Stags on Plinths
- 96 A Gilt Framed Wall Mirror
- 97 A Circular Mahogany Three Shelf Whatnot
- 98 A Pair of Staffordshire Dogs
- 99 A Rare Staffordshire Dogs Head Money Box
- 100 A Very Good Full Sized Suit of Armour
- 101 A 'Bective' Shoe Fitters Oak Stool
- 102 Two Pairs of Nicely Gilted and Decorated Glass Vases
- 103 A Nicely Decorated Mantle Clock and Its Matching Display Shelf
- 104 A Good Useful Magnifying Glass



1



6



9



13



14



15



16



17



18



22



26



27



29



30



31



35



37



39



30



43



44



45



48



40



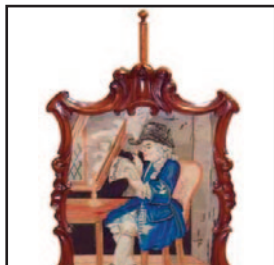
54



55



58



58



61



62



63



60



65

- 105 A Superb Pair of Victorian Dutch Marquetry Chairs
- 106 An Oil Painting 'The Dry Arch' - Sam McLarnon
- 107 An Oil Painting 'Thatched Living' - R B Higgins
- 108 A Very Nice Pair of Large Gilt Framed Stag Paintings
- 109 A Heavy Brass Figurine of a Horse
- 110 An Antique Hanging Corner Cabinet
- 111 A Burr Walnut Bedside Cabinet
- 112 A Waterford Crystal Footed Vase
- 113 A Watercolour 'Portballintrae' - W Scott
- 114 A Watercolour 'Sea and Landscape' - H A Graham
- 115 A Rosewood What Not
- 116 A Tyrone Crystal Comport
- 117 A Nice Pair of Figurines
- 118 An Oil Painting 'Pansies'- EA Mawhinney
- 119 A Silver Plated Teapot, Sugar and Milk Jug and an Antler Handled Claret Jug
- 120 A Nice Oak Cased Spring Vienna Wall Clock
- 121 A Set of Six Tall Galway Crystal Glasses
- 122 A Set of Seven Tall Galway Crystal Glasses
- 123 A Lot of Seven Waterford Wine Glasses
- 124 A Good Crystal Water Jug
- 125 A Lot of Four Waterford Crystal Wine Glasses
- 126 A Lot of Six Edinburgh Crystal Wine Glasses
- 127 A Lot of Five Tyrone Crystal Wine Glasses
- 128 A Lot of Eight Waterford Crystal Wine Glasses
- 129 A Tyrone Crystal Comport and Five Crystal Wine Glasses
- 130 A Lot of Assorted Wine and Brandy Glasses
- 131 A Pair of Waterford Crsytal Condiments and A Pair of Waterford Crystal Candlesticks
- 132 Two Tyrone Crystal Wine Glasses and Two Waterford Stemmed Glasses
- 133 An Astragal Glazed Two Door Display Cabinet
- 134 An Octagonal Framed Print 'The Shepherd'
- 135 A Nice Gilt Framed Tapestry 'Dunluce Castle'
- 136 A Victorian Mahogany Framed Balloon Back Upholstered Armchair and It's Cushions
- 137 A Watercolour 'Drumcree Church' - Miles Gaythwaite
- 138 A Royal Doulton Figurine 'Jane'
- 139 A Royal Doulton Figurine 'Rachel'
- 140 A Royal Doulton Figurine 'Premier'
- 141 A Mahogany Nest of Three Tables
- 142 A Four Piece Silver Plated Tea Service
- 143 A Lot of Three Muffin Dishes, Cake Stand etc
- 144 A Victorian Mahogany Wall Bracket
- 145 A Georgian Mahogany Corner Unit
- 146 A Very Nicely Framed Oil Painting, Signed Manente
- 147 An Ornamental Figurine of a Bull
- 148 An Ornamental Figurine of a Bull
- 149 An Ornamental Figurine of a Bull
- 150 A Taxidermy Figurine of a Gazelle
- 151 A Watercolour 'Cottage' - G O Kane
- 152 An Oil Painting 'Still Life, Roses' - Miles Gaythwaite
- 153 An Astragal Display Cabinet
- 154 A Painting 'Lady' - G Georges
- 155 A Nice Sketch of a Boy
- 156 A Small Art Deco Style Birds Eye Maple Mirror
- 157 A Watercolour 'Lakescene' - Sandra Maze
- 158 A Watercolour 'Still Life' - W A McCarroll
- 159 A Large Bevelled Glass Wall Mirror
- 160 A 3/4 Length Mink Coat
- 161 A Nice Mink Fur Jacket
- 162 An Arched Head Overmantle
- 163 A Victorian Mahogany Large Upholstered Stool
- 164 A Rosewood Framed Bevelled Glass Wall Mirror
- 165 An Early Framed Sampler
- 166 An Oil Painting 'On the Beach' - David Peters
- 167 A Very Nice Gilt Framed Print 'The Goat Girl'
- 168 A Nice Pine Clothes Rail
- 169 A Pair of Cabriole Leg Balloon Back Chairs
- 170 A Very Nice Five Piece Porcelain Silver Plated 'Windmill' Tea Service and Other Pieces
- 171 A Nice Pair of Butterfly Plaques
- 172 A Pair of Galway Crystal Candlesticks
- 173 A Very Good Oval Mahogany Coffee Table
- 174 A Set of Three Queen Elizabeth II Commerative Plates
- 175 Two 'Julia Chintz' Trios and a Matching Milk and Sugar
- 176 A Lot of Four Small Bisque Dolls
- 177 A Very Nice Pair of Bretby Hand Painted and Decorated Vases
- 178 A Nice Pair of Oriental Vases
- 179 A Nice Lot of Three Large Royal Doulton Character Plates
- 180 A Nice Sized Inlaid Mahogany Open Bookcase, Two Drawers
- 181 A Very Nice Silver Plated Spirit Kettle on Stand and a Dome Lidded Serving Dish
- 182 A Very Nice Two Drawer Bedside Cabinet / Lamp Table
- 183 A Royal Doulton Figurine 'Charlotte'
- 184 A Royal Doulton Figurine 'Melanie'
- 185 A Very Nice Inlaid Octagonal Topped Table
- 186 A Very Fine 'Rouge Flambe' Figurine 'The Home Coming'
- 187 Two Cased Sets of Royal Doulton Napkin Rings
- 188 An Inlaid Yewood Nest of Three Tables
- 189 A Very Good Embossed Brass Coal Scuttle
- 190 A Very Nice Twist Pillar Oil Lamp, Blue Bowl and Etched Shade
- 191 An Interesting Set of Three Coloured Glass Murano Clowns
- 192 A Pair of Large Hand Made Pottery Dishes
- 193 An Embossed Brass Pillar Cottage Lamp and Shade
- 194 A Mahogany Standard Lamp and Shade
- 195 A Very Unusual Hand Painted Glass Pillar Oil Lamp Embossed Bowl and Etched Shade
- 196 An Austrian Turn Wien Dish
- 197 A Mahogany Nest of Shaped Front Tables
- 198 A Austrian Turn Wien Dish
- 199 A Very Nice Circular Waterford Crystal Centre Light Fitting
- 200 A Nice Pair of Circular Marble Top Bedside Cabinets
- 201 A Nice Inlaid Mahogany Single Drawer Sofa Table
- 202 Two Nice Figurines of Young Ladies
- 203 A Large Hunting Scene Print
- 204 A Mahogany Inlaid Overmantle
- 205 A Georgian Mahogany Astragal Door Corner Cabinet
- 206 An Inlaid Mahogany Folding Cakestand
- 207 An Unusual Pair of Brass Electrified Lamps
- 208 A Royal Kent Bone China Tea and Dinner Set
- 209 A Very Nice Oak Framed Bevelled Glass Wall Mirror
- 210 A Nice Pair of Gilt Framed Pictures
- 211 An Early Pair of Staffordshire Dogs
- 212 Three Early Coloured Gilt Framed Prints
- 213 An Inlaid Mahogany Side Table
- 214 A Good Floor Runner
- 215 An Unusual Walnut Firescreen / Tapestry Panel



70



73



75



77



80



82



83



86



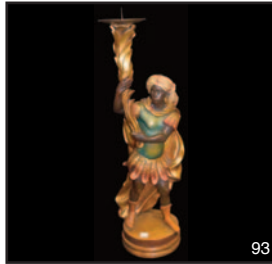
87



91



92



93



95



100



101



103



105



106



107



109



115



126



133



136



137



145



160



168



170



173



186



190



195

- 216 A Royal Albert 'Winsome' Teaset
- 217 A Good Lot of Assorted Cutlery, Knife Rest and Crumb Tray
- 218 A Very Good Lot of Three pairs of Coasters and Two Others
- 219 A Buttoned Leather Easy Armchair
- 220 A Very Nice Sized Edwardian Mahogany, Five Drawer Chest
- 221 A Mahogany Occasional Table
- 222 An Oil Painting 'In Fine Tune' - Sean White
- 223 A Maling Bowl and Vase
- 224 A Very Nice Pair of Hand Painted and Decorated Jugs
- 225 A Brass Pillar Oil Lamp, Hand Painted Bowl
- 226 A Charlotte Rhead Bowl and a Crown Devon Bowl
- 227 A Carved Hardwood Plantstand, Marble Inset
- 228 A Lot of 7 Assorted Pieces
- 229 A Two Handled Tray, Hand Crafted Inset
- 230 A Very Fine Bronze Figurine - 'Dancers'
- 231 A Very Nice Bronze Figurine - 'Dancer'
- 232 A Very Nice Bronze Figurine - 'Young Lady'
- 233 An Inlaid Oval Victorian Mahogany Breakfast Table
- 234 A Hardwood and Carved Tall Plantstand, Marble Inset
- 235 A Very Similar Tall Plantstand , Marble Inset
- 236 A Radford Jug 'Butterfly Ware'
- 237 A Nest Shaped Front Mahogany Nest of Three Tables
- 238 Two Pairs of Oriental Vases
- 239 A Victorian Mahogany Sewing Box on Stand
- 240 A Nice Edwardian Mahogany Upholstered Armchair
- 241 A Good Floor Runner
- 242 A Pair of Edwardian Nursing Chairs
- 243 An Old 'Field Marshall Robert's' Plaque and a 'Lt General Sir George' White Plaque
- 244 A Very Nice Hardwood Tea Trolley
- 245 A Very Nice Sized Polescreen
- 246 A Very Nice Mahogany Captains Chair
- 247 An Oil Painting 'Figure Study' - Brian Ballard
- 248 A Pastal Drawing 'Heading Out' - Kieran McGoran
- 249 A Pastal Drawing 'Getting Ready for Off' - Kieran McGoran
- 250 An Oil Painting 'Waiting in the Rain' - Donal McNaughton
- 251 A Very Nice Pair of Edwardian Mahogany Upholstered Armchairs
- 252 A Large Circular Mahogany Coffee Table, Leather Inset
- 253 A Large Circular Imari Plaque
- 254 A Pair of Imari Vases
- 255 An Early Cased Game 'Chinese Game of Four Winds'
- 256 A Royal Doulton Figurine 'Biddy Penny Farthing'
- 257 A Royal Doulton Figurine 'Balloon Man'
- 258 A Royal Doulton Figurine 'The Old Balloon Seller'
- 259 A Very Nice Pair of Two Handled Decorated Vases
- 260 A Mahogany Mirror Backed Chiffionier
- 261 A Very Nice Early Bone China Teaset
- 262 An Oil Painting 'Picking Apples' - Stephen Brown
- 263 An Oil Painting 'Children on the Beach'
- 264 A Very Nice Gilt Framed Wall Mirror with Candle Sconces
- 265 An Oil Painting 'Approaching Showers; - Arthur Twells
- 266 A Royal Doulton Plate
- 267 A Nice Shaped and Decorated Jug and Basin Set
- 268 A Pair of Belleek Vases
- 269 An Edwardian Inlaid Mahogany Dressing Table
- 270 A Very Fine Pair of Large Two Handled Hand Painted and Decorated Vases
- 271 An Oval Edwardian Inlaid Mirror
- 272 A Clarice Cliff 'Budgies' Planter
- 273 A William & Mary Style Antique Stool
- 274 A Very Fine Pair of Two Handled Hand Painted and Decorated Vases
- 275 A Large Rectangular Carpet Square 144" x 108"
- 276 A Pair of Art Nouveau Austrian Vases by James Hanke C1910
- 277 A Large Beswick Fireside Labrador
- 278 A Nice Slimline Victorian Mahogany Side Table
- 279 A Nice 'Atlanta' Salsbury Bone China Tea and Dinner Set
- 280 A Superb Rosewood Circular Dining Room Table on Ornate Carved Paw Footed Base
- 281 A Pair of Silver Plated Candleholders
- 282 A Pair of Silver Plated Candleholders
- 283 A Pair of Silver Plated Candlesticks
- 284 A Nice Gilted Metal and Decorated Mantle Clock
- 285 A Very Nice Art Deco Ceiling Light
- 286 A Very Nice Circular Plant Pot
- 287 A Chinese Egg Holder
- 288 An Aynsley Orchard Gold Lidded Jar
- 289 A Fine Ormolu Mounted Mahogany Two Tiered Table
- 290 A Very Nice Gilted Metal Mantle Clock
- 291 A Very Ornate Pair of Brass Candlesticks
- 292 A Dressing Table Set
- 293 A Very Nice Mahogany Canterbury
- 294 A Georgian Mahogany 'D' End Hall / Side Table
- 295 A Brass Pillar Oil Lamp, Hand Painted Bowl and Etched Shade
- 296 A Set of Three Limoges Dessert Dishes
- 297 An Early Old Hand Painted and Decorated Jug
- 298 A Limoges Dish
- 299 A Belleek Plate and a Wishing Well Plate
- 300 A Most Superb Edwardian Inlaid Rosewood Mirrored Back Display Cabinet
- 301 A Square Occasional Mahogany Table
- 302 An Early Lord Roberts Jug and a 1953 - 78 Coronation Mug
- 303 A Waterford Crystal Table Lamp and Shade
- 304 An Unusual Crystal Biscuit Barrell
- 305 A Large Waterford Crystal Bowl
- 306 A Crystal Decanter
- 307 A Waterford Crystal Ships Decanter
- 308 A Large Waterford Crystal Table Lamp and Shade
- 309 A Very Heavy Brass Figural Candleabra
- 310 A Very Nice Oil Painting - 'Boy' - Ossary Dunlop
- 311 An Edwardian Inlaid Mahogany Sideboard
- 312 A Victorian Oil on Canvas, Portrait of a Lady, Signed and Dated, John Horsburg
- 313 A Victorian Mahogany Shield Mirror
- 314 A Very Nice Pair of Hand Painted and Decorated Two Handled Vases
- 315 A Very Nice Mahogany Astragal Glazed Mirror Backed Display Cabinet, Four Shelves
- 316 A Beswick Figurine of a Horse
- 317 A Large Beswick Figurine of a Horse
- 318 A Beswick Figurine of a Horse
- 319 A Beswick Figurine of a Horse
- 320 A Beswick Figurine of a Horse
- 321 A Beswick Figurine of a Horse and Foal



196



199



200



201



205



214



215



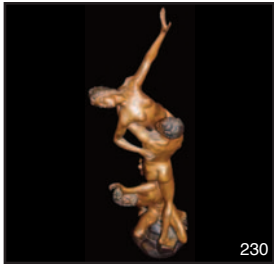
218



219



224



230



232



233



236



239



240



244



248



249



250



251



254



256



259



264



265



269



270



273



275



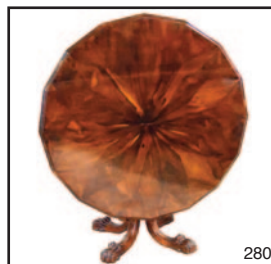
276



277



279

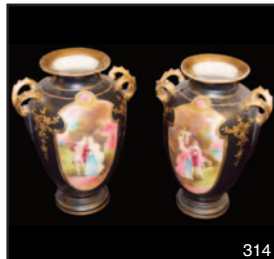
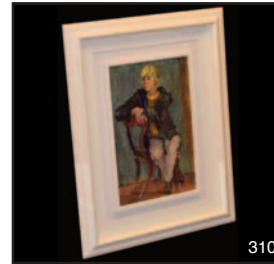
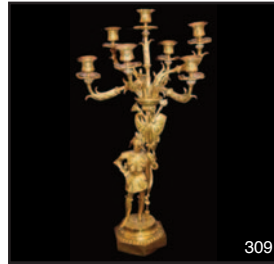


280

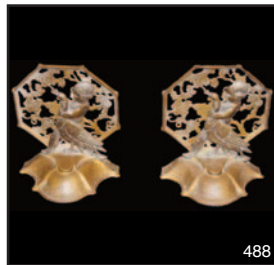
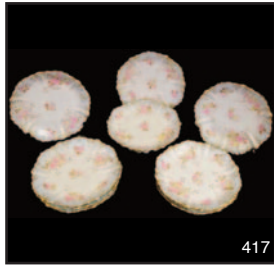


284

- 322 A Beswick Figurine Horse and Lady Rider
 - 323 A Beswick Figurine Horse and Rider
 - 324 A Beswick Figurine Child on Pony
 - 325 A Beswick Figurine Child on Pony
 - 326 A Beswick Figurine of a Fox and Four Beswick Beagles
 - 327 A Beswick Figurine of a Horse
 - 328 A Beswick Figurine of a Horse and Foal a/f
 - 329 A Beswick Figurine of a Horse
 - 330 A Beswick Figurine of a Pony
 - 331 A Beswick Figurine of a Horse and Foal a/f
 - 332 A Belleek Two Handled Table Lamp Base
 - 333 A Clear Glass Oil Lamp
 - 334 An Aynsley 'Orchard Gold' Lidded Jar
 - 335 An Aynsley 'Orchard Gold' Two Handled Vase
 - 336 A Very Fine Belleek 'Cupid' Candle Holder
 - 337 A Lot of Flower Encrusted and Another Belleek Planter
 - 338 A Royal Doulton Commemorative Tankard 'Henry VIII'
 - 339 A Nice Antique Games Table
 - 340 An Inlaid Marquetry Rosewood Chiffoneer
 - 341 A Golden Oak Banjo Aneroid Barometer
 - 342 A Very Nice Pair of Gilt Framed Pictures 'Rural Scenes'
 - 343 A Royal Doulton Figurine 'Janet'
 - 344 A Small Royal Doulton 'Monica'
 - 345 A Worcester Hand Painted Biscuit Barrell and a Nice Decorated Cabinet Plate
 - 346 A Lot of Five Saucers and Plates and A Bone Handled Carving Knife and Fork
 - 347 A Royal Worcester Figurines 'Grandmothers Dress'
 - 348 A Small Royal Doulton Figurine 'Peggy'
 - 349 A Capodimonte Limited Edition Figurine of a Lady
 - 350 A Very Nice Flower Encrusted Footed Basket
 - 351 A Small Royal Doulton Figurine 'Valerie'
 - 352 A Small Royal Doulton Figurine 'Greta'
 - 353 A Mahogany Framed Upholstered Corner Chair
 - 354 A Watercolour 'Belfast Bar' - Jim McDonald
 - 355 A Barley Sugar Twist Walnut Chair
 - 356 An Oak and Brass Coal Scuttle
 - 357 A Very Nice Pair of Embossed Candlesticks
 - 358 An Oil Painting 'New Sign' - Honor Gorman
 - 359 A Georgian Mahogany Night Stand
 - 360 A Nice Three Piece Gilted Metal Clock Set
 - 361 A Lot of Six Waterford Wine Glasses
 - 362 A Noritake Teapot, Covered Sugar Bowl and Milk Jug
 - 363 A Very Nice Lot of Silver Plate
 - 364 A Nice Pink Vase
 - 365 A Bow Fronted Serpentine Shaped Display Cabinet
 - 366 An Edwardian Parlour Chair
 - 367 A Watercolour 'Double Top' - J M McCready 1989
 - 368 A Georgian Mahogany Turnover Leaf Games Table
 - 369 A Mahogany Cased Spring Vienna Wall Clock
 - 370 A Set of Four Bunnykins Figurines
 - 371 A Set of Three Bunnykins Figurines and Their Mirror Backed Stand
 - 372 A Set of Four Bunnykins Figurines
 - 373 A Victorian Mahogany Bedside Cabinet
 - 374 A Nice Old Wind Up Model Car
 - 375 A Tiffany Glass Table Lamp and Shade
 - 376 A No.2 Folding Autograph Brownie Camera
 - 377 A Kodak 6-20 Camera
 - 378 A Voigtlander Perro Folding camera 1932
 - 379 A Pocket Kodak Junior Autograph Camera 1914
 - 380 A Kodak Junior 6-16 Camera
 - 381 A Deckel Shutter, Georz Folding Camera
 - 382 A Ensign Ranger II Trikon F63 Camera
 - 383 A Kodak Vest Pocket Autograph Camera, Circa 1915
 - 384 An Altax Veber Camera
 - 385 A Ross Ensign Camera Beltix Swapper Camera
 - 386 A Patherscope Cine Camera
 - 387 An Eastman Kodak, Pocket Camera
 - 388 An Ensign Haughton Butcher Carbine Camera
 - 389 A Kodak Retinette II Circa 1939
 - 390 A Kodak 1 Pocket Autograph Camera Circa 1914
 - 391 A Cornfield 66 Camera
 - 392 A Kodak Junior Folding Camera
 - 393 A Vario Folding Camera
 - 394 A Georz Compur Camera
 - 395 A Hawkeye Shutter Camera
 - 396 A Kodak 127 Camera
 - 397 A Swiza Travel Clock and Its Original Box
 - 398 A Nice Bumford Pistol
 - 399 A Pair of Silver Mounted Blue Glass Decanters a/f
- THURSDAY EVENING**
- 400 A Very Nice Gibsons Circular Decorated Planter
 - 401 A Pair of Silver Plated Shoes
 - 402 A Victorian Porcelain Floral Vase
 - 403 A Nice Pair of Ornamental Figurines Lady and Gent
 - 404 A Pair of Victorian Porcelain Figurines
 - 405 A Very Nice Sized Small Chest of Five Drawers
 - 406 A Very Nice Shaped Front Chest of Four Drawers
 - 407 A Mahogany Tub Chair
 - 408 An Early Collectors Doll
 - 409 An Edwardian Standard Lamp
 - 410 A Rare Occasional Table with Porcelain Recessed Decorated Plaque, Gilted Gallery and Mounts
 - 411 An Oak Longcase Clock with Painted Moon Dial
 - 412 A William and Mary Style Antique Stool
 - 413 A Victorian Mahogany Towel Rail
 - 414 A Victorian Mahogany Parlour Chair
 - 415 A Very Nice Victorian Shaped Front Display Cabinet with Painted Panels
 - 416 A Set of Six Waterford Sundae Dishes
 - 417 A Limoges Dessert Set
 - 418 A Rare 'Maurice Limited Edition Delivery Man' Teapot and Two Character Jugs
 - 419 A Nice Bevelled Glass Oval Wall Mirror
 - 420 A Very Nice Inlaid Mahogany Shaped Front Chest of Four Drawers
 - 421 A Very Nice Circular Plant Pot
 - 422 A Nice Pair of Figurines 'Lady and Gent'
 - 423 A Pair of Royal Doulton 'Blue Iris' Pattern Porcelain Vases Circa, 1905
 - 424 A Nice Cabinet Cup, Saucer and Plate
 - 425 A Nice Cabinet Cup, Saucer and Plate
 - 426 A Jaeger lecoultre Mantle Clock and Its Original Box
 - 427 A Mahogany Polescreen, Needlework Tapestry
 - 428 A Very Nice Pair of Oriental Vases
 - 429 A Large Sylvac Dog
 - 430 A Very Tall Moorcroft Vase
 - 431 A Very Nice Moorcroft Vase
 - 432 A Very Nice Moorcroft Vase



- 433 A Good Mahogany Pedestal
- 433a A Nice Overpot
- 434 A Nice Victorian Walnut Peer Cabinet
- 435 A Very Nice Victorian Burr Walnut Davenport
- 436 An Oil Painting - 'Sheep in Byre'
- 437 An Oil Painting 'Reflections, Connemara' - Maurice Wilks
- 438 A Nice Small Dressing / Shaving Mirror
- 439 A Nice Mahogany Framed Upholstered Button Backed Armchair
- 440 A Nice Oil Painting 'Sailing Boat'
- 441 A Gilted Figurine Mantle Clock
- 442 A Porcelain Pears Figurine 'Bubbles'
- 443 A Pair of Victorian Porcelain Candlesticks
- 444 A Royal Worcester Nightingale Bird, Honeysuckle - Dorothy Susan Doughty
- 445 A Silver Plated Teapot and a Decorated Small Decanter
- 446 A Very Nice Antique Mahogany 'Bon Heur Du Jour' Desk
- 447 A Royal Worcester Grey Wagtail Bird, Yellow Flowers - Dorothy Susan Doughty
- 448 A Very Nice Ornately Decorated Tall Jug
- 449 An Oil Painting 'Thatched Cottages'
- 450 An Antique Oak Stool
- 451 A Queen Anne Style Oval Mahogany Stool, Tapestry Top, Ball Claw Feet
- 452 A Mahogany Sutherland Table
- 453 A Silver Plated Teapot, Sugar and Milk Jug
- 454 A Dressing Table Mirror
- 455 A Nice Mahogany Framed Upholstered Double End Settee
- 456 A Very Nice Tuscan China Teaset
- 457 A Lot of Four Honey Pots
- 458 An Unusual Collection of Cigarette Lighters
- 459 A Pair of Oriental Vases and a Lidded Vase
- 460 A Nice Sized Chest of Eight Drawers
- 461 A Victorian Mahogany Dressing Table Mirror
- 462 A Nice Circular Overpot
- 463 A Small Shelved Corner Cabinet
- 464 An Antique Oak Bed Table
- 465 A Brass Stick / Umbrella Stand
- 466 A Nice Beech Gents Walking Stick
- 467 A Nice Gents Walking Stick
- 468 A Nice Porcelain Handled Gents Walking Stick and a Brass Handled Walking Stick
- 469 A Very Good Large Noritake Teaset
- 470 A Large Oriental Circular Jar
- 471 A Good Glass Oil Lamp
- 472 A Lot of Four Small Royal Doulton Character Jugs
- 473 A Lot of Five Miniature Royal Doulton Character Jugs
- 474 A Pair of Scottie Dog Bookends
- 475 A Lot of Three Sylvac Flower Holders
- 476 A Lot of Three Small Coalport Figurines
- 477 An Old Charm Corner Cabinet, Leaded Glass Doors
- 478 A Crown Devon Scottie Dog and Two Others
- 479 A Royal Albert 'Lavender Rose' Coffee Set
- 480 A Very Nice Brass Faced Vienna Wall Clock, Matching Pendulum
- 481 A Nice Framed Print 'Dover Castle' and an Oval Crystoleum of a Lady
- 482 A Nice Watercolour 'Collection Sticks'
- 483 A Large Framed Map of the Pacific Ocean
- 484 A Framed Photograph of Charles McAuley
- 485 A Nice Set of Three Watercolours 'Carlisle'
- 486 A Mahogany Wall Cabinet, Mirror Door
- 487 A Mahogany Turnover Leaf Tea Table
- 488 A Signed Pair of Brass Figurines 'Girl and Goose' - Oscar B Bach
- 489 A Nice Brass Pillar Oil Lamp Embossed Bowl
- 490 A Very Nice Mahogany Breakfront Gallery Back Sideboard, Lion Mounts
- 491 A Silver Plated Tea Urn
- 492 A Very Good Pair of Bronzed Spelter Figurines
- 493 A Brass Corinthian Pillar Oil Lamp, Ruby Bowl and Etched Shade
- 494 A Polecreen with Needlework Tapestry of a 'Peacock'
- 495 A Very Nice Mahogany Framed Upholstered Settee
- 496 A Chinese Brass Dragon Wall Plaque
- 497 A Very Large Antique Shillelagh
- 498 A Victorian Silver and Crocodile Skin Riding Crop
- 499 A Silver Mounted Riding Crop
- 500 An Oil Painting 'Church in the Glens' - Charles McAuley
- 501 A Gouache 'Awaiting his Arrival' - Markey Robinson
- 502 An Oil Painting 'Out for a Stroll' - Hugh McIlfratrick
- 503 An Oil Painting 'Glenveagh, Donegal' - Hugh McIlfratrick
- 504 An Oil Painting 'Feeding Hens' - William Cunningham
- 505 A Watercolour 'Seagoe Church' - Miles Gaythwaite
- 506 A Watercolour 'On the Beach' - Martin Hasson
- 507 An Oil Painting 'Errigal' - Manson Blair
- 508 A Watercolour 'Bush Bay, Portballintrae' - Uel Spry
- 509 A Fine Oil Painting 'Snow & Winter Trees, Straid' - Manson Blair
- 510 A Very Nice Oil Painting 'Sunset in the Glens' - Charles McAuley
- 511 A Gouache 'Seeing them Off' - Markey Robinson
- 512 A Large Watercolour 'Whiterocks, Portrush' - Sam McLarnon
- 513 A Pair of Coloured Etchings 'Whiterocks, Portrush' and 'Portrush from the Sand Dunnes' - R Cresswell Boak
- 514 A Very Nice Pair of Triple Framed Etchings
- 515 A Large Victorian Inlaid Mahogany Wall Mirror, c1890
- 516 A Gilt Framed Wall Bracket
- 517 A Small Mahogany Cased Spring Vienna Wall Clock
- 518 An Oil Painting 'Rough Seas' In a Heavy Gilt Frame
- 519 A Mahogany Framed Upholstered Armchair
- 520 A Nice Pair of Two Handled Hand Painted and Decorated Vases
- 521 An Inlaid Mahogany Occasional / Lamp Table, Drop Leaf
- 522 A Nice Oval Framed Print 'Young Lady'
- 523 A Waterford Crystal Ships Decanter
- 524 A Nice Set of Eight Crystal Sundae Dishes
- 525 A Nice Set of Six Crystal Wine Glasses
- 526 A Nice Set of Waterford Crystal Footed Glasses
- 527 An Inlaid Mahogany Sutherland Table, c1900
- 528 A Border Fine Art Limited Edition Figurine 'Teabreak' and its Presentation Box
- 529 A Bevon and Funnel Mahogany Sofe Table
- 530 A Large Waterford Crystal Table Lamp and Shade
- 531 A Very Fine Oil Painting 'A Watchful Eye' - Stanley McCormick



- 532 An Oil Painting 'Leister Square' - John F Hunter
- 533 A Nice Mahogany Standard Lamp and Table
- 534 A Very Nice Mahogany Dressing Mirror On Stand
- 535 A Tyrone Crystal Candle Holder
- 536 A Tyrone Crystal Candle Holder
- 537 A Crystal Candle Holder, Footed Bowl and a Crystal Vase
- 538 A Lot of Seven 'Shelley Plates' 'Blue and Pink Daisy'
- 539 A Miscellaneous Lot of Silver Plate
- 540 An Edwardian Inlaid Mahogany Games Table, circa 1890
- 541 An Oil Painting 'The Shepherds Friend' - Roy Wallace
- 542 A Watercolour 'The Old Bridge' - Joan Murray
- 543 A Watercolour 'Winter Sheep' - Elaine Bell
- 544 A Set of Mahogany Hanging Bookshelves
- 545 A Very Good Mahogany Cased Free Swinger Wall Clock
- 546 An Oil Painting 'The Milk Cart' - Miles Gaythwaite
- 547 A Nicely Framed Print 'Summer Bathing' - W Russell Flint
- 548 An Oil Painting 'Tynan Abbey' - Miles Gaythwaite
- 549 A Watercolour 'Turf Bog Country' - Miles Gaythwaite
- 550 A Very Nice Print 'The Water Pump' - W Conor
- 551 A Gouache 'Their Off' - Markey Robinson
- 552 A Watercolour 'Shankhill Parish Church, Lurgan' - Miles Gaythwaite
- 553 A Painting on Board 'Caesar'
- 554 Three Very Nice Albums 'Portrush Depot to the Whiterocks' 'Portrush Terminal etc'
- 555 An Oil Painting 'Rooster' - Paula McKinney
- 556 An Oil Painting 'At the Hay' - Gregory Moore
- 557 A Studio Art Glass Vase and a Doulton Figurine
- 558 A Lot of Four Willow Tree Figurines
- 559 A Colclough Bone China Teaset
- 560 A Very Nice Open Top Oak Farmhouse Three Drawer Dresser
- 561 A Set of Four Chinese Plates
- 562 A Single Blue Boarder Plate
- 563 A Coalport Oval Dish
- 564 A Nice Early Hand Painted Coffee Set
- 565 A Paragon China 'Belinda' Tea and Dinner Set
- 566 A Nao and Another Similar Figurine
- 567 Two Nao Figurines and a Similar Figurine
- 568 A Pair of Limoges Plates
- 569 A Pair of Limoges Plates
- 570 A Pair of Limoges Plates
- 571 A Very Nice Large Masons Ironstone Dinner Set
- 572 A Royal Albert 'Celebration' Teaset
- 573 A Yew Wood Double Pedestal Writing Desk, Leather Inset
- 574 A William and Mary Style Antique Stool
- 575 A Superb Finely Carved Firescreen, Handcrafted Panel
- 576 A Large Beswick Figurine of a Dulux Dog
- 577 A Very Nice Small Waterford Crystal Ships Decanter
- 578 A Pair of Silver Plate Coasters, Silver Plate Milk Jug and Sugar
- 579 A Dressing Table Ornament and a Royal Vienna Porcelain Dish
- 580 A Nice Pair of Framed Porcelain Limoges Plaques
- 581 A Lot of Three Glass Clowns
- 582 A Very Nice Limoges Dessert Set , 15 Plates and 2 Comports
- 582a A Matched Pair of Framed Silhouettes
- 583 A Pair of Watercolour 'Landscapes' - H A Graham
- 584 A Watercolour 'Aghla Mount Near Glentaise'
- 585 An Edwardian Display Cabinet with Bow Front
- 586 A Key Box in the Form of a Sailing Boat'
- 587 A Pair of Heavy Crystal Candle Holders
- 588 A Royal Worcester Figurine 'Grandmothers Dress'
- 589 A Sylvac Vase, Bunny Vase and Three Bunny Figurines
- 590 A Very Nice Victorian Mahogany Side / Hall Table
- 591 A Royal Doulton Figurine 'Christmas Morn'
- 592 A Royal Doulton Figurine 'Top of the Hill'
- 593 A Pair of Mary Gregory Vases and a Ruby Jug
- 594 An Unusual Pair of Beswick Horse Heads
- 595 A Pair of Nicely Decorated Vases and a Similar Large Goblet
- 596 A Staffordshire Flatback
- 597 A Victorian Figurine of a Gent
- 598 A Very Nice Victorian Hand Painted and Two Handled Vase
- 599 A Pencil Drawing 'Figure Study' - Martin Hasson
- 600 A Very Good Corinthian Pillar Oil Lamp, Hand Painted Bowl and Etched Glass Shade
- 601 A Pencil Drawing 'Abstract' - Martin Hasson
- 602 A Large Border Fine Art Figurine 'Morning Feed'
- 603 A Nice Mahogany Framed Dressing Mirror on Stand
- 604 An Oil Painting 'Antrim Coast' - After Charles McAuley
- 605 A Very Nice Inlaid Mahogany Coner Whatnot
- 606 A Pair of Very Good Mappin & Webb Silver Plated Tankards
- 607 An Oak Banjo Aneroid Barometer
- 608 An Old Bushmills Distillery Whiskey Jug
- 609 A Brass Circular Barometer
- 610 A Tall Waterford Crystal Vase and a Crystal Fruit Bowl
- 611 A Nice Inlaid Upholstered Saddle Stool
- 612 A Nice Sized Inlaid Mahogany Ladies Writing Desk
- 613 A Moorcroft Lidded Jar
- 614 A Figurine Sanicast Dog
- 615 An Edwardian Settee
- 616 A Small Cheval Mirror
- 617 A Silver Mounted Walking Cane
- 618 A Very Nice Silver Necked Whiskey Decanter, London 1975
- 619 A Boverian Porcelain Decorated Fruit Bowl
- 620 A Large Inlaid Mahogany Coffee Table
- 621 A Very Nice Silver Plated Oil Lamp Base with Glass Bowl a/f
- 622 A Pair of Lidded Aynsley Orchard Gold Vases
- 623 A Tyrone Crystal Model of a Chello and its Bow
- 624 A Nice Hard Backed Book 'Stormont, The House on the Hill'
- 625 A Lot of Small Wade Animal Figurines
- 626 A Pair of Mahogany Framed Upholstered Armchairs
- 627 A Mahogany Oval Tray
- 628 A Late Victorian Travelling Trunk
- 629 A Copper Framed Bevelled Glass Wall Mirror
- 630 A Very Nice Shaped Front Victorian Hall Table
- 631 A Victorian Masons Ironstone Jug with Serpent Handle
- 632 A Chamberlain Worcester Decorated Vase
- 633 A Hammersley Bone China Overpot
- 634 An Edwardian Parlour Chair



493



494



495



500



501



502



504



506



507



509



511



518



522



524



528



530



531



540



545



546



551



555



556



560



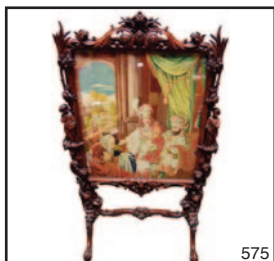
565



585



573



575



576



580



585



590

- 635 A Large Pair of Porcelain Figurines
- 636 An Oval Mahogany Occasional Table
- 637 A Limoges Hand Painted Dish and a Handpainted Two Handled Bowl
- 638 A Superb Large Watercolour 'Early Morning, Carrickfergus Castle' - Sam McLarnon
- 639 An Oil Painting 'A Bridge of East and West, Amsterdam' - Alan Duke
- 640 A Very Good Pair of Tall Waterford Crystal Vases
- 641 A Nice Mahogany Occasional Table
- 642 A Very Nice Decorated Centre Piece 'Woman at Well'
- 643 A Watercolour 'Seagulls on the Beach'
- 644 An Oil Painting 'Cattle' - T S Cooper and A Victorian Engraving
- 645 A Large Watercolour 'In the Moss'
- 646 A Pair of 19th Century Prints in Gilt Oval Frames
- 647 A Figurine Based Table Lamp and A Similar Figurine
- 648 A Very Rare Boar War Christmas Tin
- 649 A Rare Early Victorian William III Staffordshire Plaque
- 650 A Pair of Upholstered Stools
- 650a A Figurine 'Masai with Child'
- 651 A Beswick Charlois Bull on Stand
- 652 A Large Mintons 'Cockatrice' Dinner Set and Some Other Matching Pieces a/f
- 653 A Royal Standard Bone China Teaset
- 654 A Clarice Cliff Celtic Harvest Jam Dish
- 655 A Royal Worcester Gilted and Hand Painted Vase
- 656 A Baccarat Crystal Dice Paperweight
- 657 A Royal Doulton Figurine 'Priscilla'
- 658 A Nice Pair of Japanese Hand Painted Vases
- 659 A Belleek Lidded Biscuit Barrell
- 660 A Rare Stoneware Masonic Flask
- 661 A Royal Crown Derby Vase
- 662 A Royal Crown Derby Lidded Trinket Box
- 663 A Belleek Shamrock Pattern Vase
- 664 A Belleek 2nd Period Shamrock Pattern Bowl
- 665 A Belleek 2nd Period Shamrock Pattern Jug
- 666 An Early Wind Up Toy
- 667 A Copeland Spode China Hand Painted Plate
- 668 An Abbeydale Porcelain Lidded Bowl
- 669 A Very Nice Pair of Gilted and Decorated Japanese Vases
- 670 A Large Royal Crown Derby Figurine of a Bengal Tiger
- 671 A Figurine of a 'North Light' Horse
- 672 A Pair of Ruby Glass Salts
- 673 A Hand Painted Coalport Lidded Vase
- 674 A Royal Worcester Bird 'White Throat Hen' - Dorothy Susan Doughty
- 675 A Large Victorian Hand Painted Royal Worcester Claret Jug
- 676 A Large Hand Painted Royal Worcester Flat Back Jug
- 677 A Hand Painted Lidded Vase 'Feeding Hens' - Francis Clark
- 678 A Royal Crown Derby Figurine of a Cat
- 679 A Royal Crown Derby Figurine of a Cat
- 680 A Royal Crown Derby Figurine of a Cat
- 681 A Royal Worcester Cup and Saucer
- 682 A Royal Crown Derby Cigar Pattern Cup, Saucer and Plate
- 683 A Crown Derby Cup and Saucer
- 684 A Very Good Pair of High Backed Oak Framed Carved Hall Chairs
- 685 A Tyrone Crystal Bowl and its Presentation Box
- 686 A Fabulous Large Slate Four Pillar Mantle Clock, Mercury Pendulum
- 687 A Nice Occasional / Lamp Table
- 688 A Large Oval Gilt Framed Wall Mirror
- 689 A Magnifying Glass
- 690 A Volume 'History of Freemasonry in the Province of Antrim 1748-1915 by RW Bro Samuel Leighton 1938
- 691 A Five Inch Silver Footed Tray, London 1902
- 692 A Silver Milk Jug, London 1880
- 693 A Silver Sauceboat, London 1792, Maker Henry Greeway
- 694 A Silver Decorative Basket, London 1723, Edward Cornock
- 695 A Silver Salver, London 1786, Maker William Brind
- 696 A Silver Sugar Bowl, London 1880
- 697 A Silver Cream Jug, Chester 1915, Richard Richardson
- 698 A Silver Cigarette Case 1937, J C Limited
- 699 A Silver Cigarette Case, Birmingham 1913, MM & Co
- 700 A Four Piece Silver Tea Service, Sheffield 1968
- 701 A Silver Handled Magnifying Glass, London 1872
- 702 A Superb Early Victorian Embossed Silver Tankard, London 1864, Robert & Briggs
- 703 Six Silver Forks, London 1859
- 704 A Sugar Duster, London 1962
- 705 A 13 Inch Silver Salver, London 1883, John Edward Benard
- 706 A Pair of Silver Ladles, London 1823
- 707 A Superb Irish Silver Shell Bowl Ladle, Dublin 1816, William Cummins
- 708 A Lot of Four and Two Silver Teaspoons, Dublin 1828, William Cummins
- 709 A Cigarette Case, Birmingham 1896, JMB
- 710 A Silver Teapot, London 1825, Rebecca Emes and Edward Bernard
- 711 A Silver Fish Fork, London 1898, Robert Sharp
- 712 A Silver Sugar Bowl, Edinburgh 1910, Hamilton & Inch
- 713 A Silver Sugar Bowl, Sheffield 1892, H & S
- 714 A Silver Toast Rack, Birmingham 1909, W B Limited
- 715 A Silver Teapot, London 1822, Rebecca Emes and Edward Bernard
- 716 Two Silver and a Silver Plated Pair of Tongs
- 717 A Lot of Four Silver Spoons, Dublin 1828, William Cummins
- 718 A Silver Serving Spoon, Dublin 1782
- 719 A Silver Ladle, Edinburgh 1810
- 720 A Silver Teapot, London 1828, Rebecca Emes and Edward Bernard
- 721 A Nice Engraved Caddy Spoon, Sheffield 1930, W Savage
- 722 A Pair of Early Silver Spoons, London 1801 Godbehere, Wigan & Bult
- 723 A Silver Card Case, Birmingham 1906, MM & M Matthews
- 724 A Silver Cigarette Case, Birmingham 1910, Hamilton & Inches
- 725 A Silver Teapot, Edinburgh 1910, Hamilton & Inches
- 726 Four Silver Ladles, London 1800, Wiliam Ewey and William Feran
- 727 Two Silver Spoons, London 1894, Peter and Ann Bateman
- 728 A Lot of Eight Silver Teaspoons, Circa 1800, William Cummins



5981



602



605



607



611



612



613



615



615



627



628



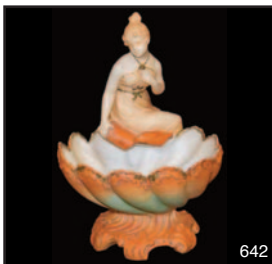
630



633



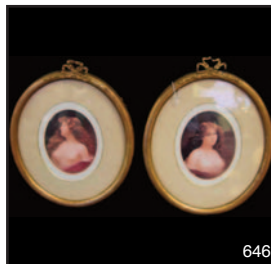
635



642



645



646



651



660



668



669



670



673



675



676



682



684



686



691



694



695



700



702

- 729 A Pair of Silver Candlesticks, Birmingham 1915
- 730 A Large Silver Plated Nautilus Spoon Warmer
- 731 A Silver Cream Jug, Edinburgh 1910, Hamilton & Inches
- 732 A Silver Table Basket, Sheffield 1894, Henry Archer & Co
- 733 A Silver Fruit Spoon, London 1770, William Shaw
- 734 A Silver Fish Slice, London 1814, Thomas Daniel
- 735 A Silver Plate Teapot
- 736 Two Silver Mustard Spoons, London 1877, Henry Herbet
- 737 Two Silver Mustard Spoons, London 1832, James Beebe
- 738 Eight Silver Spoons, Dublin 1828, William Cummins
- 739 A Very Nice Large Solid Silver Photo Frame
- 740 A Silver Jug, Dublin 1826
- 741 A George III Scottish Silver Ladle, Edinburgh 1808 William Marshall
- 742 A Superb Very Early Silver Marrow Scoop, London 1764 T & W Chawner
- 743 A Three Piece Silver Condiment Set, Birmingham 1925
- 744 A Solid Silver Photo Frame
- 745 A Lot of Six Silver Dinner Forks (5 Dublin 1795 and 1 Dublin 17960
- 746 An Old 'Eau de Cologne' Bottle in Silver Sleeve, Birmingham 1918
- 747 A Silver Serving Spoon, Dublin 1803
- 748 A Lot of Two Silver Mustard Spoons, London 1806 and London 1812
- 749 A Lot of Four Silver Teaspoons, Dublin 1828, William Cummins
- 750 A Silver Spoon, London 1877, W Adams
- 751 Two Silver Salt Spoons, Edinburgh, 1827
- 752 A Nice Cased Set of Solid Silver Spoons & Tongs, Birmingham 1908
- 753 A Set of Bone Handled Fish Knives and Forks
- 754 Four Silver Plated Tables Spoons
- 755 A Very Nice Pair of Silver Plated Grape Scissors
- 756 A Solid Silver Pill Box
- 757 Two Silver Plated Straining Ladles
- 758 A Lot of Three Silver Napkin, Birmingham 1926 and Two Napkin Rings, Birmingham 1930
- 759 A Lot of Three Silver Napkin Rings, London 1819, 1823 and Birmingham 18595
- 760 A Sherry Bottle Marker with Chain, London 1844, Maker Charles Rawlings
- 761 A Lot of Six Silver Backed Dressing Table Pieces
- 762 Two Silver Topped Dressin Table Pieces, Birmingham 1906 and Birmingham 1907
- 763 A 15ct Gold and Diamond Brooch
- 764 A 9ct Gold Brooch
- 765 A 9ct Gold Brooch
- 766 A 9ct Gold Diamond Ring
- 767 A 9ct Gold Diamond Ring
- 768 An 18ct Gold and Sapphire Ring
- 769 An 18ct Gold Emerald and Diamond Ring
- 770 A Very Nice Platinum Sapphire and Diamond Deco Style Ring,
- 771 A Nice Silver Bracelet
- 772 A Very Nice Silver Albert / Neckchain, Birmingham 1921
- 773 A 9ct Gold Tie Pin
- 774 A 9ct Gold Inset Ring
- 775 A Very Nice Platinum Yellow Sapphire and Diamond Ring
- 776 An 18ct Gold Long Chain
- 777 A Swaroski Gilted Bracelet
- 778 An 18ct Gold and Platinum Diamond Ring
- 779 A 9ct Gold Mystic Topaz Ring
- 780 A Heavy 9ct Gold Chain and T Bar
- 781 A Nice Heavy 9ct Gold Smokey Citrine Fob
- 782 A Nice 9ct Gold Diamond Solataire Ring
- 783 A 9ct White Gold Amethyst Ring
- 784 A 9ct Gold and Garnet Ring
- 785 A Fine Platinum and Opal Diamond Cluster Ring
- 786 A 9ct and Sapphire Ring
- 787 A 9ct Gold Wedding Band
- 788 A Nice 3 Sided Fob and Chain
- 789 A Very Nice 9ct White Gold Diamond Ring, Diamonds 0.25ct
- 790 A Very Fine Platinum and Diamond Three Stone Ring
- 791 A 9ct Gold Sapphire and Cubic Zircona Ring
- 792 A 9ct Gold Wedding Band
- 793 A Superb 14ct Gold and Cultered Pearl Brooch 6.4 gms
- 794 A Nice Silver Blue Topaz Ring
- 795 A Superb Platinum Sapphire and Diamond Cluster Ring
- 796 A Superb Early Victorian 18ct Gold Carved Almadine Garnet and Diamond Ring
- 797 A 9ct Gold Multi Gem Ring
- 798 A 9ct Gold Signet Ring
- 799 A Victory Badge and a Masonic Tie Pin
- 800 A Very Good Silver Pocket Watch, Gordon of Ballymoney
- 801 An Interesting Collection of Two Badges, Cent Bracelet, Silver Jubilee Holder etc
- 802 A King Quartz Watch and 'Caravelle' Time Piece on Chain
- 803 A Vintage Gold Plated and Black Lacquer Dunhill Lighter
- 804 A Masonic Key Stone Medal
- 805 A Silver Proof Commemorative Coin, Lady Diana Spencer
- 806 A Silver Proof Commemorative £5 Coin 2014
- 807 A Solid Silver Proof 1 1/2 oz Coin
- 808 An Irish Scilling 1966 and Two Sets 'Coins of Ireland 1967'
- 809 A George VI Crown 1951
- 810 A Victorian 1887 Crown
- 811 Seven Florins 1933 and Earlier
- 812 A George V Crown 1951
- 813 Three Victorian 1/2 Pennys 1838/1853/1854
- 814 A 1953 Crown and a 1960 Crown
- 815 A Lot of Crowns etc and Two Old Ten Shilling Notes
- 816 Ten Commemorative Coins
- 817 A Bag of Miscellaneous British and Irish Coins



704



710



713



715



720



726



729



732



736



739



740



743



745



746



750



763



765



767



772



775



776



781



783



784



788



789



790



791



794



795



799



800



805



808



811

mcafee



51 Main Street, Ballymoney, BT53 6AN, Tel: (028) 2766 7669