

The background of the poster is a painting of a town, likely Ballycastle, viewed from a distance. A river flows through the foreground, and a large church spire is visible on the left side of the town. The sky is filled with soft, grey clouds.

mrafee

**Ballycastle
Two Night Sale**

**Wednesday 16th & Thursday 17th
August @ 6:30pm**

Conditions

1. The highest approved bidder shall be the purchaser. The Auctioneer reserves the right to refuse any bid, and should any dispute arise between two or more bidders, the lot or lots in dispute shall be put up again, or not, and resold at the discretion of the Auctioneer, or the auctioneer may declare the purchaser. The Auctioneer reserves the right to bid on behalf of the vendor up to and including any reserve price placed on any lot and to alter, divide, group or withdraw any lot or lots either before or at any time during the sale.
2. The Auctioneer shall regulate the bidding and no bid shall be retracted.
3. Every purchaser shall give his name and place of abode, in default of which the Auctioneers shall have the power to resell at once, or afterwards as they may think fit.
4. Each bidder shall be supposed to have seen and to be thoroughly acquainted with the contents and conditions of the lot or lots on which he may bid, and no allowance whatsoever will be made for any faults, imperfections or errors of any description. The measurements and quantities described in the Catalogue are believed to be correct and must be taken as such. The purchaser being held to have satisfied himself as to measurements and quantities and other specifications in the Catalogue before bidding, neither will the Auctioneers or the Vendors be responsible for any lot or parts of any lot after the fall of the hammer, from which time all lots purchased are at the risk of the Purchaser.
5. The Auctioneers or the Vendors do not guarantee the measurements catalogued, or the correct description, genuineness or authenticity of any lot.
6. Each purchaser shall pay the whole amount of his purchase money (Auctioneer's Commission payable by purchaser) for all lots bought by him before any lot or lots can be removed and the whole amount due from each purchaser must be absolutely paid on each day of the sale and if not paid within such time, all moneys deposited in any part payment shall be absolutely forfeited and the Auctioneers will be at liberty to resell the lot or lots or any parts thereof remaining un-removed, by Public Sale or otherwise, without giving previous notice to the purchaser and any difference or deficiencies which may arise from, such re-sale, together with all expenses attending the same shall be made good by the purchaser.
7. The lots are sold with all faults and errors of description. No allowance can be made in any case, nor will the Vendors be answerable for any deficiencies in quantities or

measurements when the purchaser, his agent, carrier or man employed by him has removed any part of his lot or lots from the premises. All lots purchased must be removed absolutely in the time specified and if not so removed may be resold by the Vendors.

8. The Purchaser shall be answerable for all damages occasioned by any injury or other lots, by the removal of lots purchased by them, or to the premises and to repair or pay damages to the owners of same before the removal of their lots from the premises. In the event of any persons interested in the premises, claiming the whole or any part of a lot before its removal there from or if in the Auctioneer's opinion, the removal of any lot will endanger or permanently damage any building, the Auctioneer may, by written notice to the purchaser of such lot delivered to him or his Agent, or sent by post to his abode or place of business last known to the Auctioneers, rescind the sale of any such lot. The purchaser shall then be repaid his purchase money but shall not have or make any other claim.
9. Such lot or lots as are not cleared away agreeably to the condition of this sale, will not only be forfeited and may be dealt with under last condition, but the purchaser shall pay every expense attending the removal of any such lot or lots, and the costs of making good any damage occasioned by such removal. No lots shall be removed until the day following the last day of sale.
10. If any dispute or difference arises about any lot, or any other subject, the same shall be settled by the Auctioneers, with the approval of the Vendors, whose determination shall be final and binding on all parties concerned.
11. The Auctioneers nor the Vendors do not accept any liability for personal injuries of any description sustained or caused by any reason whatsoever by any person while on the premises or otherwise.
12. Purchasers will pay 15% Auctioneers Commission (minimum fee £1) + VAT on the commission.



Ballycastle

Important Two Night Sale The Auction Rooms, Anne Street

Wednesday 16th & Thursday 17th August @ 6.30pm



A nice selection of antique and general furniture and furnishings, Clocks, Paintings, Mirrors, Barometers, Lamps, Collectibles including beswick, Sylvac, doulton, Waterford and other Crystal, large selection of tea and dinner sets, local and other books, silver, jewellery, linen, brass, copper, coins, rugs etc

View the catalogue on [easyliveauctions](http://easyliveauctions.com) or our virtual room tour on the McAfee auctions website.

Viewing Monday and Tuesday 14th and 15th from 3.00-5.00 and 6.30-8.00 and on Thursday the day of sale from 3.00-5.00.

Sale to be held online in the Ballymoney auction room.

easyliveAuction.com

- 1 A Good Metal and Wooden Garden Seat
- 2 A Pair of Planters and Contents
- 3 A Lot of Five Planters and Contents
- 4 A Lot of Six Planters and Contents
- 5 A Lot of Four Storage Containers
- 6 A Nice Garden Bird Bath
- 7 A Nice Circular Bird Bath and a Figurine of a Child
- 8 A Metal End Garden Bench
- 9 An Old Office Chair
- 10 A Lot of Triang, Hornby and Other Locomotives, Track etc
- 10a A Three Leaf Folding Table
- 11 A Good Set of Aluminium Ladders
- 12 A Good Old Trunk
- 13 Two Old Turf Spades
- 14 An Old Axe and a Spade
- 15 A Bisley Four Drawer Filing Cabinet as new
- 15a A Gilt Framed Wall Mirror
- 16 A Bisley Four Drawer Filing Cabinet as new
- 17 A Two Drawer Filing Cabinet
- 18 A Good Sturdy Oak Storage / Work Shelf
- 19 Two Good Old Crocks
- 20 A New Rotak Electric Rotary Lawn Mower
- 21 A Good Set of Wooden Steps
- 22 A Two Tier Gilt Trolley
- 23 A Stereo Radio Cassette Recorder for the blind
- 24 A New 21 Piece Royal Albert 'Old Country Rose' Teaset
- 25 A Very Good Royal Albert 'Old Country Rose' Teaset
- 26 A New 21 Piece Paragon China 'Belinda' Teaset
- 27 A Good Boxed Lot of Ceramics, Glassware etc
- 28 A Slimline Mahogany Open Bookcase
- 29 A Paper Shredder
- 30 A Very Good Gilt Framed Overmantle
- 30a A Boxed Lot of Teacups, Saucers etc
- 31 A Good Superser Style Heater
- 32 A Scale Model of An Old Kitchen Fire Grate
- 33 A Bronzed Shire Horse
- 34 A Good Ruby Jug
- 35 A Large Circular Planter and Another
- 36 A Pair of Cast Metal Pillars
- 37 An Old Horse Collar etc
- 38 A Good Bench Vice
- 39 A Nice Old Vintage Sower
- 40 A Good Ladies Bicycle
- 41 A Preserving Pan and a Copper Lidded Saucepan
- 42 A 21 Piece Royal Albert 'Rainbow' Teaset
- 43 A Good Set of Six Matching Gilt Metal Lights
- 44 A Very Good Box of Fishing Reels etc
- 45 A Good Fish Kettle
- 46 A Royal Night Bone China Tea and Salad Set
- 47 A Good Box of Brass Door and Window Fittings
- 48 An Old Hat Box
- 49 A Good Vintage 'ASW' Music Centre, Speakers etc
- 50 A Good Oak Hall Chair
- 51 A Queens University Rowing Oar 8's, used at Henley Royal Regatta
- 52 A Good Fishing Rod and Reel
- 53 A Good Fishing Rod and Reel
- 54 An Early Old Pump
- 55 A Good Jerry Can
- 56 A Good Jerry Can
- 57 A Limed Oak Coffee Table
- 58 A Good Lot of Assorted Wall Plates etc
- 59 A Gilted Figurine of a Dog and a A Large Oval Platter
- 60 A Good Victorian Mahogany Dressing Mirror
- 61 A Kitchen Table and Chair Set
- 62 A Windfield Electric Sewing Machine
- 63 Two Nice Crystal Fruit Bowls
- 64 A Small Mahogany Drop Leaf Occasional Table
- 65 A Victorian Mahogany Longcase Clock 'Neill of Belfast'
- 66 A Gilt Framed Wall Mirror
- 67 A Colclough Bone China Teaset
- 68 A Large Collection of Vintage Childrens Books
- 69 A Large Assortment of Royal Albert 'Old Country Rose' Ware
- 70 A Nice Mahogany Set of Open Bookshelves
- 71 A Pair of Framed Prints and Another
- 72 A 'Lonely Socks' Metal Sign
- 73 An Interesting Lot of Old Books including a Volume 'Faces of The Fair'
- 74 Two Interesting Books 'The Banner of Faith' and Another
- 75 A Nice Oak Two Door and Two Drawer Side Cabinet
- 76 An Old Vintage Photograph Album
- 77 A Good Lot of Interesting Books
- 78 A Nice Pair of Gilted Metal Figurines 'Birds'
- 79 A Metal and Glass Based Table Lamp and Shade
- 80 A Very Good Buttoned Leather Swivel Chair
- 81 Two Lidded EntrÈe Dishes, Coffee Pot etc
- 82 A Mahogany Nest of Three Tables
- 83 A Nao Cat
- 84 A Nice Art Deco Mantle Clock
- 85 An Oak Three Shelf Bookcase
- 86 An Edwardian Mahogany Plantstand
- 87 A Good Lot of History and Other Books
- 88 A Mahogany Framed Tapestry Firescreen / Table
- 89 A Nice Oak Six Drawer Coffee Table
- 90 An Unusual Edwardian Walnut Drop Side Table



11



16



17



19



21



32



39



49



50



61



62



66



67



70



73



74



75



80

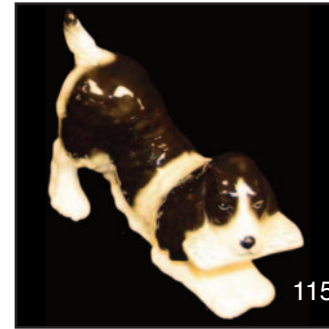
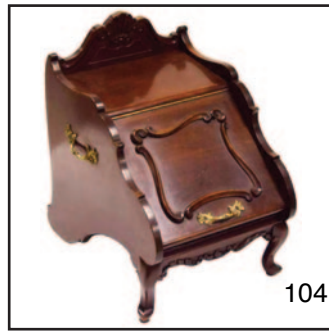


90



95

- 91 An Industrial Style Table Lamp and Shade
- 92 A Large Unframed Picture of a Bike
- 93 A Very Nice Mahogany Two Door Side Table
- 94 An Early Set of 25 x 52 Field Glasses and Their Case
- 95 A Very Good Spode Blue and White Tea Service, Teapot etc
- 95a A Large Tiffany Glass Centre Light Fitting
- 96 A Set of 7 x 50 Field Glasses and Their Case
- 97 A Set of 10 x 50 Field Glasses and Their Case
- 98 A Royal Albert 'Romance' Teaset
- 99 A Ceramic Decorated Stand
- 100 A Very Nice Victorian Oak Mirror Backed Hall Stand
- 101 A Button Backed Bedroom Chair
- 102 A Good Gun Case and Two Sets of Gun Cleaners
- 103 A Very Nice Upholstered Rocking Chair
- 104 An Unusual Edwardian Mahogany Fall Front Coal Scuttle
- 105 A Very Nice Inlaid Mahogany Four Drawer Chest with Dressing Slide
- 106 A Pair of Early Mahogany 'D' End Tables
- 107 A Large Circular 'Killarney' Crystal Fruit Bowl
- 108 A Brass Pillar Oil Lamp and Shade
- 109 A Victorian Mahogany Lidded Chest
- 110 An Early Oak School Desk
- 111 A Large Mahogany Framed Upholstered Armchair
- 112 A Vintage Revolving Desk Chair
- 113 A Good Uplighter
- 114 A Beswick Figurine of a Dachund
- 115 A Coppercraft Figurine of a Dog
- 116 A Small Mahogany Plantstand
- 117 An Oval Dressing Mirror on Stand
- 118 A Bevelled Glass Dressing Mirror
- 119 A Circular Mahogany Coffee Table
- 120 A Georgian Mahogany Turn Over Leaf Tea Table with Secret End Drawer
- 121 A Royal Doulton Character Plate, Hand Painted Vase and Another
- 122 A Very Good Collection of Old Pipes
- 123 A Mahogany Dressing Mirror on Stand
- 124 A Nice Lot of Eight Maling Sundae Dishes
- 125 An Oil Painting 'The Pillared Gate' - Miles Gaythwaite
- 126 A Very Nice Mahogany Drop Leaf Occasional Table, Leather Inset
- 127 An Edwardian Mahogany Wine Table
- 128 An Unusual Octagonal Wall Mirror
- 129 An Arch Topped Quartz Wall Clock
- 130 An Early Oil Painting of a Horses Head
- 131 An Early Oil Painting of a Horses Head
- 132 An Oak Framed Upholstered Armchair with Matching Stool
- 133 A Nice Mahogany Corner Display Unit
- 134 A Royal Doulton Pekingese Dog
- 135 A Very Nice Slimline Chest of Eight Drawers
- 136 A Beswick Figurine 'and this little Piggy had none'
- 137 A High Backed Upholstered Reclining Armchair
- 138 A Hemelle Wall Clock
- 139 Two Nice Beswick Figurines 'Beagle' and 'Bassett'
- 140 A Very Nice Shaped Front Slimline Chest of Six Drawers
- 141 Two Glass Bells
- 142 A Nice Early Oil Painting of a Horse
- 143 A Very Good Lot of Interesting books
- 144 A Fisherman Mug
- 145 An Oil Painting 'Evening at Dunseverick' - Noel Shaw
- 146 A Room Lighter / Reading Lamp
- 147 An Edwardian Mahogany Three Teir Cakestand
- 148 A Very Nice Carved Oak Hall Bench
- 149 A Nice Pair of Charles McAuley Framed Prints
- 150 A Very Good Extending Rectangular Pine Kitchen Table and Matching Six Chair Set with Rush Seats
- 151 A Good Pine Lidded Box
- 152 A Very Interesting Lot of Local Books
- 153 A Lladro Rabbit
- 154 A Nice Sized Windsor Style Armchair
- 155 A Very Nice Mahogany Two Door Concave Display cabinet
- 156 A Very Good Royal Albert Old Country Rose 12 Place Tea Set and Salad Set
- 157 A Slimline Inlaid Side Table, Four Drawers
- 158 A Duchess Bone China Teaset
- 159 A Nice Early China Teaset
- 160 A Royal Albert 'Old Country Rose' Coffee Set, Salad Set and Other Pieces
- 161 A Good Lot of Royal Albert 'Old Country Rose', Tea and Salad Plates, Jugs etc
- 162 A Nicely Framed Large Print 'Shopping in the Rain'
- 163 A Nice Oak Leaded Glass Bookcase / Display Cabinet
- 164 A Galway Crystal Candle Holder and a Waterford Crystal Vase
- 165 A Nice Small Circular Oak Cased Barometer
- 166 An Unusual Cloisonne Style Lidded Jar
- 167 A Large Oil Painting 'Poppy Field'
- 168 A Very Good 'Rayware' Tea and Dinner Set and Some Other Pieces
- 169 A Brass Pillar Oil Lamp and Shade
- 170 A Very Nice Seven Drawer Side Cabinet
- 171 A Very Good 'Jaques of London' Croquet Set in Original Box
- 172 An Oil Painting 'River and Landscape' - E Fisher
- 172a A Nice Framed Wall Mirror
- 173 A Very Good Metal Book Press
- 174 A Good Set of Bowls and Their Bag



- 175 A 'Skylux' Telescope Complete with Stand and Accessories
- 176 A Brass Three Branch Centre Light Fitting
- 177 A Brass Three Branch Centre Light Fitting, Ruby Shades
- 178 A Bevelled Glass Mahogany Framed Overmantle
- 179 A Very Large Shell Case in the Form of a Planter and Another for Cleaning
- 180 A Nice Patio Table and Matching Metal Chair Set
- 181 A lot of Four Folding Bar Stools
- 182 A Collection of Small Pieces of Limoges
- 183 A New Cork Screw and An Apple Peeler
- 184 Two Shelves of Collectors Dolls
- 185 A Good Early Set of Pine Open Bookshelves
- 186 An Oak Framed Wall Mirror
- 187 A Mahogany Cased Banjo Style Barometer
- 188 A Very Good Set of Granite Placemats
- 189 A Pair of Bowls and their Bag
- 190 A Good Phillips Hostess Heated Cabinet, as New
- 191 A Lot of Three Old Lamps
- 192 A Part Teaset and Other Pieces
- 193 A Nice Lot of Pottery Table Ware
- 194 A Nice Lot of Linen
- 195 A Small Kitchen Table and Matching Chair Set
- 196 A Lot of Old Centre and Wall Light Fittings
- 197 A Good Box of Hardback and Other Books
- 198 A Silver Plated Tea Service on tray
- 199 A Box Lot of Crystal and Glassware
- 200 A Very Nice Ercol Three Piece Upholstered Suite, as New
- 201 A Good Rectangular Floor Rug
- 202 A Helmet Shaped Coal Scuttle
- 203 A Good Lot of Glassware
- 204 A Nice Set of Six Tyrone Crystal Stemmed Glasses
- 205 A Very Good Two Seater Leather Settee and Matching Armchair
- 206 A Tyrone Crystal Candleholder and A Tryone Crystal Mantle Clock
- 207 A Nice Grafron Bone China Teaset
- 208 A Bunnykins, A Wade and Another Figurine
- 209 A Royal Doulton 'Sonnet' Dinner Set
- 210 A Very Nice Edwardian Inlaid Mahogany Side Cabinet wth Gilted Metal Gallery
- 211 A Good Collection of Model Cars in Original Boxes
- 212 A Large Collection of Ceramics
- 213 A Large Collection of Wedgewood and Other Similar Tableware
- 214 A Victorian Mahogany Two Drawer Book Press
- 215 A Gilted Metal Based Hall Table with Faux Marble Top
- 216 An Interesting Lot of Local and Other Books
- 217 A Nice Modern Nest of Three Tables
- 218 A Four Piece Silver Plated Tea Service and Its Gallery Tray
- 219 A Pair of Leather Three Seater Settees
- 220 A Nice Shaped Front Mahogany Wall Mounted Hat / Coat Stand
- 221 A Brass Pillar Oil Lamp and Shade
- 222 A Nice Laura Ashley Two Drawer Side Table
- 223 A Half Set of Vintage China
- 224 An Oil Painting 'Glenaan' - Sam McLarnon
- 225 A Watercolour 'White Park Bay' - Sam McLarnon
- 226 A Nice Upholstered Mahogany Framed Chair
- 227 A Pine Clothes Rail
- 228 A Coalport Figurine 'Theresa'
- 229 A Coalport Figurine 'Geraldine'
- 230 A Coalport Figurine 'Melissa'
- 231 A Coalport Figurine 'Happy Anniversary'
- 232 Three Pieces of Blue Mountain Pottery
- 233 A Very Nice Mahogany Standard Lamp and Shade, carved Base
- 234 A Very Nice Brass Lidded Two Handled Bowl
- 235 A Nice Pair of Edwardian Mahogany Upholstered Armchairs
- 236 An Edwardian Mahogany Oval Occasional Table
- 237 A Pine Towel Rail
- 238 A Pine Dressing Table Mirror
- 239 A Set of Mahogany Freestanding or Wall Shelves
- 240 A Very Nice Mahogany Cased Granddaughter Clock
- 241 A Royal Doulton Figurine 'Fragrance'
- 242 Two Royal Doulton Figurines 'Monica' and 'Bridesmaid'
- 243 A Nice Pine Dressing Mirror on Stand
- 244 An Elizabethan 'Chatsworth' Teaset
- 245 A Nice Oak Occasional Table, Barley Twist Legs
- 246 A Royal Albert 'Petit Point' China Teaset
- 247 A Very Nice Georgian Mahogany Inlaid Corner Cupboard
- 248 An Old 'Glastonburys' Print and Another 'Cottagers Hospitality'
- 249 A Nice Pair of Gilted Mirror Wall Brackets for Restoration
- 250 A Very Fine Inlaid Mahogany Turn Over Leaf Card Table
- 251 An Upholstered Balloon Backed Chair
- 252 A Good Box of Linen
- 253 Two Sylvac Dogs
- 254 A Lot of Interesting Books, Robert Burns etc
- 255 An Edwardian Inlaid Mahogany Oval Occasional Table
- 256 A Balloon Backed Upholstered Chair
- 257 Two Royal Doulton Figurines 'Marie' and 'Valerie'
- 258 Two Royal Doulton Figurines 'Babie' and 'Penny'



167



169



170



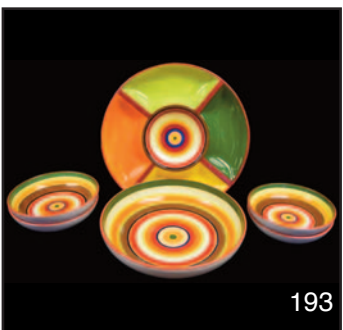
171



185



190



193



201



204



205



207



213



210



214



222



235



247



250



240

- 259 A Nice Lot of Hand Painted and Coloured Glass
- 260 A Very Nice Oval Victorian Inlaid Occasional table
- 261 A Coalport Figurine 'Strawberry Fair'
- 262 A Coalport Figurine 'Emily'
- 263 A Coalport Figurine 'Strawberry Fair'
- 264 A Watercolour 'Glenaan' - Sam McLarnon
- 265 A Very Nice 16 Piece Decorated Porcelain Dessert Set including Four Comports
- 266 A Very Nice Collection of Royal Crown Derby, Cups, Saucers, etc
- 267 A Nice Set of Eight Royal Albert 'Lady Carlisle' TV Cups and Plates
- 268 A Nice Early Royal Albert Teaset
- 269 A Nice Set of Three Oak Tables
- 270 A Nice English Pottery Coffee Set
- 271 A Nice Carved Back Mahogany Upholstered Armchair
- 272 A Watercolour 'Ballycastle from Railway Walk' - Sam McLarnon
- 273 A Watercolour 'Glenballyeamon' - Sam McLarnon
- 274 A Nice Mahogany Occasional Table
- 275 A Pair of Equestrian Prints and Two Others
- 276 A Watercolour 'Near Traweene Bay' - Olive E Davidson
- 277 A Mahogany Wine Table
- 278 A Good 'Hermelle' Westminster Chime Mantle Clock
- 279 A Nice Coffee table, Nest of Two Tables and Pair of Matching Wall Shelves
- 280 A Victorian Mahogany Oak Cased Barometer
- 281 A Nice Inlaid Mahogany Mantle Clock
- 282 A Vintage 'Smyths' Drop Dial Wall Clock
- 283 An Unusual Mahogany Magazine Rack
- 284 A Mahogany Dressing Mirror On Stand
- 285 A Very Nice Pair of Windsor Style Armchairs
- 286 A Watercolour and Printed Framed Plaque 'The Precious Blood' - Miles Gaythwaite
- 287 A Three Fold Dressing Table Mirror
- 288 An Early Bone China Teaset
- 289 An Old Carriage Clock Case, Plant Holders etc
- 290 A Very Nice Circular Dining Room Table on Centre Pedestal
- 291 A Good Set of Five Balloon Back Dining Room Chairs
- 292 A Royal Stafford 'Mandolin' Tea and Dinner Set
- 293 A Good Lot of Local and Other Books
- 294 Three Volumes of 'Memories in Focus' and Other Local Books
- 295 A Nice Mahogany Three Drawer Side Cabinet
- 296 A Nice Four Piece Silver Plated Tea Service
- 297 A Limited Edition Coalport Figurine 'Best Friends'
- 298 A Limited Edition Coalport Figurine 'Sophie'
- 299 A Limited Edition Coalport Figurine 'Sarah Jane'
- 300 A Nice Victorian Side / Hall Table, Two Drawers
- 301 A 'King William, No Surrender' Bowl and Some Coronation Ware
- 302 An Early Old Teapot, Comport and Jug
- 303 A Pair of Crown Ducal Vases and Other Ceramics
- 304 A Nice English Bone China Teaset
- 305 A Good Lot of Four Royal Winton Leaf Plates
- 306 A Good Lot of Blue and White Ware
- 307 An Old Victorian Kitchen Armchair
- 308 Four Nice Pieces of Tyrone and Other Crystal
- 309 A Large Poole Circular Bowl
- 310 A Hand Crafted and Glazed Circular Bowl
- 311 A Beswick Lidded Hand Painted Dish and a Nice Centre Piece
- 312 A Good Lot of Old Car Manuals
- 313 A 'Myotts' Tea Set
- 314 A Nice Early Old Teaset
- 315 A Good Extending Kitchen Table and Six Matching Pine Chairs
- 316 A Good Lot of Interesting Local Books
- 317 A Set of Seven Waterford Crystal Wine Glasses
- 318 A Nice Pair of Small Folding Tables
- 319 A Royal Albert 'Old Country Rose' Teaset and Other Pieces
- 320 A Very Nice Upholstered Wingbacked Drawing Room Chair
- 321 A Royal Doulton Figurine 'Dinky Do' and a Coalport Figurine 'Lucy'
- 322 A Royal Doulton Figurine 'Romany Sue' and 'Bo Peep'
- 323 Two Brass Table Lamps and Shades
- 324 A Nice Collection of Local History and Other Books
- 325 A Royal Crown Derby Planter, A Mary Gregory Vase and a Dish
- 326 A Coalport Figurine 'Winsome'
- 327 Two Early Glass Decanters and a Pair of Glass Candlesticks
- 328 A Samsung Flatscreen TV
- 329 A Mahogany Sutherland Table for Restoration
- 330 An Old Present From Coleraine Tumbler and Two Moustache Cups
- 331 A Watercolour 'The Yorkshire Dales' - Tim Ball
- 332 An Oil Painting 'On the Beach'
- 333 A Large Collection of Teapots
- 334 A Four Piece Piquot Ware Teaset
- 335 A Nice Collection of Coloured and Other Glasses
- 336 Two Pairs of Nicely Framed Circular Wall Plaques
- 337 A Lot of Three Old Mantle Clocks



255



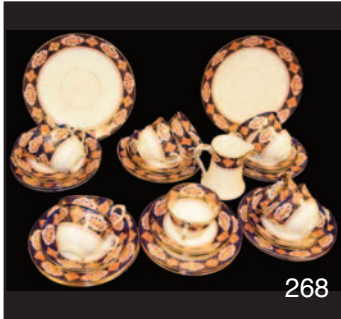
264



265



266



268



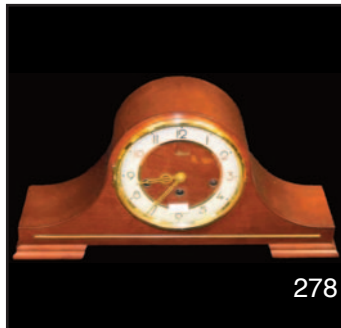
269



271



273



278



283



Table

290



292



296



300



314



315



316



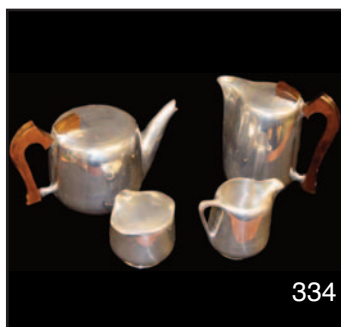
318



320



345



334



343



344

338 A Collection of Old Teapots
 339 A Nice Lot of Cermics
 340 A Blue Glass Waterjug and Six Matching Footed Tumblers
 341 A Gilted Porcelain Coffee Set
 342 A Limited Edition Signed Print 'Kettlewell Church' - After Jack Green
 343 A Watercolour 'Glenariff' - Sam McLarnon
 344 A Watercolour 'Glencloy' - Sam McLarnon
 345 A Very Nice Mahogany Corner Glazed Display Cabinet
 346 A Nice Pair of Sam McLarnon Prints
 347 A Rise and Fall Footstool
 348 A Large Masons Ironstone Bowl
 349 A Large Masons Ironstone Bowl
 350 An Oil Painting 'Out for a Stroll' - William Cunningham
 351 A Pastal 'Dappled Light'
 352 A Very Nice Two Handled Overpot
 353 A Brass Mantle Clock
 354 A Nice Figurine of a Poodle
 355 A Nice Pine Side Cabinet
 355a An Upholstered Stool
 356 A Bevelled Glass Wall Mirror
 357 A Nice Mahogany Davenport
 358 A Pine Two Door Wardrobe
 359 Two Royal Doulton Figurines 'Sandra' and 'Valerie'
 360 A Very Good Pine Farmhouse Kitchen table
 361 A Good Pair of Oak Framed Kitchen Chairs
 362 A Royal Grafton 'Indian Tree' Teaset and Other Pieces
 363 A Large Collection of Glynns Volumes and Others
 364 A Tyrone Crystal Biscuit Barrell and Two Other Pieces of Crystal
 365 A Nice Pair of Octagonal Mahogany Small tables
 366 Two Royal Doulton Figurines 'Cisse' and 'Fair Lady'
 367 A Nice Collection of Belleek
 368 A Pair of Metal Based Table Lamps and Shades
 369 A Large Glazed Earthenware Planter
 370 An Unusual Folding Upholstered Chair
 371 An Early Pair of Pug Dogs
 372 A Nice Crystal Table Lamp Base
 373 A Large Masons Ironstone Tureen, Ladle and Platter
 374 A Mahogany Drop Leaf Coffee Table
 375 A Nice Piece of Oval Decorated Glass
 376 A Sylvac Planter and a Wash Bowl a/f
 377 A Very Early Old Captain Style Chair
 378 A Good Lot of Interesting Local Books
 379 A Circular Planter
 380 A Nice Carved Front Hall Table
 381 An Edwardian Mahogany Occasional Table
 382 A Tyrone Crystal Candleholder and Other Pieces of Crystal
 383 A Large Spode Kettle
 384 A Good Lot of Six Crystal Wine Glasses

385 A Very Nice Circular Mahogany Breakfast Table
 386 A Good Set of Six Mahogany Framed Dining Room Chairs
 387 A Nice Pine Plant Stand
 388 A Rush Top and Another Footstool
 389 A Good High Backed Upholstered Armchair
 390 A Very Good Royal Albert Old Country Rose, Teaset, Coffee Set and Other Pieces
 391 A Royal Albert 'Lavender Rose' Teaset Complete with Teapot
 392 Two Part Teasets
 393 A Very Nice Gilt Framed Bevelled Glass Wall Mirror
 394 A Rossmore Dressing Table and Matching Three Drawer Chest
 395 An Oil Painting 'Giant Hogweed' - Miles Gaythwaite
 396 A Lot of Blue and White Bowls
 397 A Nice China Teaset
 398 A Large Lot of Cabinet Cups and Saucers
 399 A Mahogany Sutherland Table

Thursday Evening

400 A Large Pine Farmhouse / Boardroom Table
 401 A Large Collection of Glynns Journals
 402 A Tapestry Top Footstool
 403 A Masons Ironstone Jug and Lidded jar
 404 A Masons Ironstone Jug and Lidded Jar
 405 A Modern Nest of Three Tables
 406 An Elizabethan 'Avignon' Teaset
 407 A Lot of Three Bentwood Chairs
 408 A Standard Lamp and Shade
 409 A Nice Old Water Jug
 410 A Heavey Brass Jardinere
 411 A Royal Doulton Figurine 'The Last Waltz'
 412 A Royal Doulton Figurine 'Janet'
 413 Two Lladro Figurines 'Girls with Flowers'
 414 A Good Lot of Masons Ironstone Plates
 415 A Nice Lot of Plates including Two Aynsley 'Orchard Gold' Plate, Cakestand etc
 416 A Watercolour 'Study of a Lady and a Swan' - Martin Hasson
 417 Two Nice Decorated Jugs and a Matching Planter
 418 A Nice Pair of Coffee Tables
 419 A Waterford Crystal Comport and Other Pieces of Crystal
 420 A Very Nice Upholstered Button Wingbacked Armchair
 421 A Lot of Old Bowls etc
 422 A Nice Modern Circular Side Table
 423 A Circular Fruit Bowl and Other Pieces of Crystal
 424 An Inlaid Upholstered Single Chair
 425 A Very Nice Three Door Oak Sideboard
 426 A Nice Upholstered Bedroom Chair
 427 A Nice Upholstered Bedroom Chair



349



350



352



357



355



358



360



363



365



369



371



373



374



380



383



385



390



391



392



398



400

- 428 A Nice Sized Upholstered Day Bed
- 429 A 'Delphine' China Teaset
- 430 A Shaped Side Mahogany Occasional Table
- 431 A Very Nice Piece of Tyrone Crystal
- 432 A Royal Albert 'Berkley' Teaset with Extra Pieces
- 433 An Unusual Handcrafted Table Lamp and Shade
- 434 A Nice Old Water Jug
- 435 A Lot of Old Giants Causeway Prints
- 436 A Signed Print of 'The Palace Bar' and another
- 437 A very Old Cheese Dish and a Hand Painted Bowl
- 438 A Nice Framed Print 'Avocca, Co.Wicklow' - After Colin Gibson
- 439 A Bar Backed Single Chair
- 440 An Oil Painting on Panel of a Tiger
- 441 A Limited Edition Signed Print 'Bushmills Distillery' - Colin Gibson
- 442 A Nice Burr Walnut Corner Cabinet
- 443 A Gainsborough Bone China Teaset and Another Part Teaset
- 444 A Nice Upholstered Bedroom Chair
- 445 A Georgian Mahogany Drop Leaf Table
- 446 A Good Lot of Two Old Water Jugs
- 447 A Good Lot of Assorted Crystal
- 448 A Very Good Victorian Mahogany Dressing Mirror on Stand
- 449 A Nice Upholstered Open Armchair
- 450 An Oil Painting 'Fishing' - Noel Shaw
- 451 An Oil Painting 'Summer Sailing' - R Wintz
- 452 A Nice Shaped Gilt Framed Overmantle
- 453 A Limited Edition Pint 'Victorian Interior'
- 454 A Nice Satsuma Bowl
- 455 A Dressing Table Mirror on Stand
- 456 A Masons Ironstone Two Handled Bowl
- 457 A Pine Chest of Four Drawers
- 458 A Good Pine Framed Wall Mirror
- 459 A Small Upholstered Tub Chair
- 460 An Oil Painting 'Dunluce Castle' - T Ebbinghart
- 460a A Nice Framed Print 'Thatched Living' - W Reeves
- 461 Two Nice Old Vases
- 462 A Mahogany Bedside Cabinet
- 463 A Circular Mahogany Bedside Table
- 464 A Nice Royal Grafton Circular Bowl
- 465 A Gilt Framed Bevelled Glass Wall Mirror
- 466 An Old Volume 'History of the Gun' and a Large Volume 'Websters International Dictionary'
- 467 A Good Useful Clothes Rack
- 468 A Lot of Two Teddy Bears
- 469 A Framed Map of Palestine
- 470 A Very Good Set of Bunkbeds
- 471 A Good Lot of Linen
- 472 An Old Set of Building Blocks, Model Cars etc
- 473 A Watercolour 'The Blue Lake'
- 474 A Gilt Framed Wall Mirror
- 475 A Small Studio Couch / Daybed
- 476 Two Nice Teddy Bears
- 477 A Good Lot of L.P's
- 478 A Teddy Bear and Other Soft Toys
- 479 A Nice Early Teaset
- 480 A Nice Beswick Cat
- 481 A Nice Mantle Clock
- 482 A Nice Pottery Hen on Nest
- 483 A Nice Collection of Drinking Glasses
- 484 A Large Collection of L.P's and Their Box
- 485 A Good Elizabethan Teaset
- 486 A Royal Albert Old Country Rose Teaset
- 487 A Nice Collection of Coloured Glass Paperweights
- 488 A Belleek Based Table Lamp and Shade and a Belleek Vase
- 489 A Large Framed Photograph 'Portrush'
- 490 A Watercolour 'Cushendun' - Sam McLarnon
- 491 A Watercolour 'Rockport' - Sam McLarnon
- 492 A Pair of Upholstered Chairs
- 493 An Unusual Small Occasional Table, Bobbin Legs
- 494 A Nice Two Handled Tureen and Dish
- 495 A Large Limited Edition Royal Doulton Figurine 'Cinderella'
- 496 A Waterford Crystal Water Jug
- 497 A Small Oak Table Barley Twist Legs
- 498 A Button Backed Bedroom Chair
- 499 A Small Upholstered Chair
- 500 A Life Size Figurine of A Gentleman
- 501 A Carved Oak Hall Chair
- 502 A Carved Oak Hall Chair
- 503 Two Masons Ironstone Jugs and Another
- 504 A Small Carved Side Cabinet, Two Drawers
- 505 A Waterford Crystal Table Lamp and Shade, Slight Chip
- 506 A Small Mahogany Table Centre Pedestal, Drop Ends
- 507 A Nice Upholstered Armchair
- 508 A Brass Two Handled Lidded Pot
- 509 A Small Occasional Lamp Table
- 510 A Brass Oil Filled Standard Lamp with Ruby Shade
- 511 A Nice Framed Print 'Hay Making'
- 512 An Oil Painting 'Calf' Signed
- 513 A Bevelled Glass Wall Mirror
- 514 A Jug and Basin Set and Another Piece
- 515 A Royal Winton Flower Pot and A Crystal Basket
- 516 A Kneehole Chest of Five Drawers
- 517 An Oil Painting 'The Blue Door' - R Wintz
- 518 A Lot of Two Nice Bowls
- 519 A Nice Hand Turned Wooden Table Lamp and Shade
- 520 A Nice Shaped Front Chest of Four Drawers
- 521 A Nice Pair of Silver Plated Sauce Boats
- 522 A Pair of Early Hunting Scene Plaques and an Masons Ironstone Lidded Jar
- 523 A Nice Circular Patio Table
- 524 A Nice Pair of Circular Candle Holders



- 525 A Royal Doulton Figurine 'Sweet & Twenty'
- 526 A Royal Doulton Figurine 'Captain Cook'
- 527 An Interesting Lot of Books
- 528 A Nice Old Over Pot
- 529 A Small Edwardian Mahogany Side Table with Drawer
- 530 A Nice Gilted Metal Figurine Mantle Clock
- 531 A Nice Circular Mahogany Plantstand
- 532 A Standard Lamp and Shade
- 533 A Victorian Mahogany Towel Rail
- 534 A Metal Framed Coffee Table
- 535 A Good Rectangular Floor Rug
- 536 A Very Nice Pair of Ceramic Based Painted Table Lamps and Shades
- 537 A Crystal Bowl and Jug and a Lot of Five Silver Plated Napkin Rings
- 538 A Mahogany Nest of Three Tables
- 539 A Mayfair Bone China Coffee Set
- 540 A Very Nice Inlaid Mahogany Bookcase with Drawers Below
- 541 A Tuscan Bone China Teaset
- 542 A Nice Oval Gilt Framed Wall Mirror
- 543 A Sylvac Jug and Planter
- 544 A Very Useful Rossmore Open Bookshelf
- 545 A Watercolour 'Fairhill Street, Ballycastle' - Sam McLarnon
- 546 A Royal Albert 'Moss Rose' Teaset and Other Pieces
- 547 A Very Good Lot of Crystal
- 548 A Royal Standard 'Fascination' Teaset
- 549 A Small Mahogany Table /Canterbury
- 550 A Beswick Figurine of a Spaniel Dog
- 551 Two Nice Coloured Glass Bowls
- 552 An Early Old Bone China Teaset
- 553 A Very Good Lot of 'Kings Pattern' Newbridge Cutlery and Other Cutlery
- 554 A Very Nice Slimline Vienna Wall Clock
- 555 A Very Nice Inlaid Mahogany Cellerette, Brass Mounts
- 556 A Mahogany Cased Granddaughter Clock
- 557 A Very Nice Victorian Rosewood Sewing Box
- 558 A Nice Inlaid Mahogany Framed Upholstered Tub Chair
- 559 An Oak Framed Bevelled Glass Wall Mirror
- 560 A Victorian Mahogany Revolving Stool
- 561 An Oak Brass Bound Planter
- 561a A Watercolour 'Minavn Cliffs, Achill Island' - Hobson
- 562 A Nice Ceramic Planter
- 563 A Victorian Mahogany Occasional Table
- 564 A Nice Pair of Oriental Vases
- 565 A Very Nice Button Backed Upholstered Three Piece Suite
- 566 A Small Mahogany Chest of Drawers / Canterbury
- 567 A Tyrone Crystal Letter Opener etc
- 568 A Lot of Three Bird Figurines
- 569 A Very Nice Inlaid Victorian Mahogany Oval Table
- 570 A Very Large Carpet Square
- 571 A Colclough Bone China Teaset, Matching Jug and Teapot
- 572 A Royal Albert 'Memory Lane' Teaset and Other Pieces
- 573 A Good Lot of Silver Plate etc
- 574 A Sundry Lot Inc a Wade Piggy Bank, Cloisonné Vase etc
- 575 A Very Nice Georgian Mahogany Tea Table
- 576 A Nice Richmond Bone China 'Rosetime' Tea and Dinner Set
- 577 A Nice Nest of Three Tables
- 578 A Nice Inlaid Wag at the Wall Wall Clock
- 579 An Oil Painting 'Taking A Moment' - Signed
- 580 An Etching 'Round Tower, Windsor' - Signed
- 581 A Pair of Brass Candlesticks and A Brass Letter Rack
- 582 A Watercolour 'Bonamargey, Ballycastle' - Sam McLarnon
- 583 A Circular Mahogany Dining Room Table on Centre Pedestal
- 584 A Very Nice Set of Four Victorian Bar Back Dining Room Chairs
- 585 A Royal Albert Bone China Teaset
- 586 A Brass Pillar Oil Lamp, Hand Painted Bow and Ruby Shade
- 587 A Large Carltonware Hand Painted Lidded Jar
- 588 A Large Teddy Bear
- 589 A Figurine of A Highland Cow
- 590 A Nice Mahogany Library Table, Brass Claw Feet and Castors
- 591 A Sylvac Lidded Jar and a Lidded Hand Turned Bowl
- 592 A Royal Grafton Bone China Teaset
- 593 A Victorian Mahogany Sutherland Table
- 594 A Royal Doulton 'Easter Morn' Teaset
- 595 A Very Nice Shaped Front Library Table, Brass Toes and Castors
- 596 A Royal Doulton Figurine 'The Mask Seller'
- 597 A Royal Doulton Figurine 'The Carpet Seller'
- 598 A Royal Doulton Figurine 'Will He- Won't He'
- 599 A Beswick Figurine of Rearing Horse
- 600 A Royal Albert Figurine 'Benjamin Bunny' and a Beswick Figurine of a Bird
- 601 A Lot of Three Royal Doulton Beatrix Potter Figurines
- 602 A Geobel Bird Figurine
- 603 A Royal Doulton Figurine 'The Milk Maid'
- 604 An Edinburgh Crystal Decanter and Another
- 605 A Watercolour 'North Antrim Coast' - Sam McLarnon
- 606 A Watercolour 'Fairhead' - Sam McLarnon
- 607 A Small Tapestry Top Footstool
- 608 A Nice Old Water Jug
- 609 A Nice Old Water Jug
- 610 A Nice Inlaid Mahogany Shaped Front Sideboard
- 611 A Waterford Crystal Decanter



503



505



508



521



516



523



525



540



530



544



546



550



552



556



557



561



564



565

- 612 A Hummel Figurine 'Boy with Chello'
- 613 A Royal Worcester Figurine 'Spring Morn'
- 614 Two Nice Sylvac Dogs
- 615 A Three Piece Swiss Clock Set
- 616 A Royal Doulton Figurine 'Linda'
- 617 A Royal Doulton Figurine 'Ascot'
- 618 A Good Pair of Brass Candlesticks
- 619 A Small Mahogany Occasional Table
- 620 A Beswick Figurine 'Thewell'
- 621 A Beswick Figurine 'Small Pony'
- 622 A Beswick Figurine 'Fawn'
- 623 A Beswick Figurine of an 'Owl' and Another of Two Kittens
- 624 An Unusual Beswick Dog Ashtray and a Corgi Figurine
- 625 A Pair of Beswick Figurines 'Pandas' and a Pair of 'Koala' Bears
- 626 A Nice Lot of Five Beswick 'Birds'
- 627 A Lot of Souvenir Figurines
- 628 An Unusual Pair of Fighting Bulls
- 629 Seven Pieces of Swarovski Glass
- 630 Six Pieces of Swarovski Crystal
- 631 Six Pieces of Swarovski Crystal
- 632 Six Pieces of Swarovski Crystal
- 633 A Beswick Pig and Two Piglets
- 634 A Set of Cufflinks and 'Sixpences'
- 635 A Proof Set of 'Ethiopia' Coinage
- 636 A Very Good Large Photograph Album
- 637 A Silver Jug, London 1791
- 638 A Set of Six Silver Handled Butter Knives, Sheffield 1922
- 639 A Silver Ashtray, Birmingham 1974
- 640 A Silver Teapot, London 1907
- 641 A Georgian 18th Century Silver Pap Boat, London 1794
- 642 A Pair of Silver Napkin Rings, Birmingham 1902
- 643 A Silver Ladies Evening Bag, London 1914
- 644 A Silver Plated Picture Frame
- 645 An Unusual Silver Bracelet
- 646 A Pair of 9ct Gold Earrings
- 647 A Very Nice Gold and Cameo Brooch
- 648 An 18ct Gold Cubic Zircona Ring
- 649 A 9ct Gold and Diamond Brooch
- 650 A 9ct Gold and Amethyst Brooch
- 651 A 9ct Gold Sapphire and Pearl Brooch
- 652 A 9ct Gold and Pearl Brooch
- 653 A 9ct Gold Garnet and Pearl Brooch
- 654 A 9ct Gold Brooch
- 655 A 9ct Gold Chain and T bar
- 656 A Fine 9ct Gold and Diamond Chain
- 657 A Nice String of Fresh Water Pearls
- 658 A Gold Plated Ladies Wrist Watch
- 659 A Nice Pair of Silver and Copper Earrings
- 660 A Very Nice 9ct Gold Ladies Wrist Watch
- 661 A Nice Elephant Embossed Bangle
- 662 A Silver Necklace and T bar
- 663 A Silver Bangle
- 664 A Large Silver Locket
- 665 A Very Heavy Charm Bracelet approx, 33 Charms
- 666 A Heavy Silver Charm Bracelet, Approx 22 Charms
- 667 A Silver Perfume Bottle on Chain
- 668 A Very Nice 9ct Gold Brooch
- 669 A Pair of Silver and Amethyst Earrings
- 670 A 9ct Gold Longines Quartz Ladies Wrist Watch
- 671 A Very Nice Gold Plated Inset Brooch
- 672 A Silver Bracelet and T Bar
- 673 A Silver Necklace and T bar
- 674 A Pair of Silver Earrings
- 675 A Lot of Costume Jewellery
- 676 A Box of Costume Jewellery
- 677 A Box of Pearls and Other Jewellery
- 678 A Lot of Charms, Tie Pins, Rings etc
- 679 A Box of Costume Jewellery
- 680 A Box of Costume Jewellery
- 681 A Box of Costume Jewellery
- 682 A Magnifying Glass
- 683 A 'Frey Willie' Necklace
- 684 A Lot of Six Bangles
- 685 A Lot of Earrings
- 686 An Irish 3D Piece and a Tube of Old Pennies
- 687 A Lot of Old Match Boxes
- 688 An 1884 Shilling
- 689 A 1950 Florin
- 690 A 1870 Sydney Mint Australian Sovereign
- 691 A 1968 US Kennedy Half Dollar
- 692 A 2000 US Sacagawea Liberty Dollar
- 693 A 1853 Braided Hair Liberty One Cent
- 694 A 1820 George III Shilling
- 695 A Set of Britains First Decimal Coins
- 696 A £5.00 Coin and Three Crowns
- 697 An Italian Micro Mosaic Brooch
- 698 A Lot of Five Pen Knives
- 699 A Part Set of Great Britain Half Pennies (1902-1933)
- 700 A Full Set of Great Britain Half Pennies (1935-1967)
- 701 A Part Set of Great Britain Pennies (1930-1967)
- 702 A Part Set of Great Britain Pennies (1902-1929)
- 703 A Part Set of Great Britain Six Pence Collection (1914-1967)
- 704 A Part Set of Great Britain Shillings / 5 Pence Collection (1953 - 1970)
- 705 A Part Set of Great Britain Shillings Collection (1937 - 1951)
- 706 A Full Set of Great Britain Florins / 10 Pence Collection (1941 - 1971)
- 707 A Part Set of Great Britain Half Crowns Collection (1941 - 1967)
- 708 A Jewellery Box and Contents
- 709 A Lot of Ladies Wrist Watches



571



572



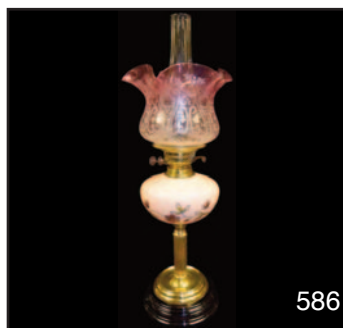
575



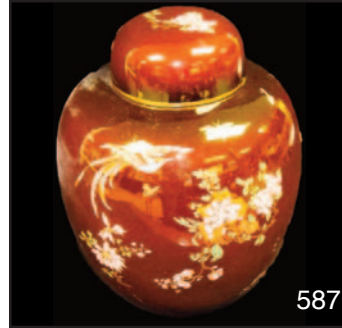
579



583



586



587



597



598



599



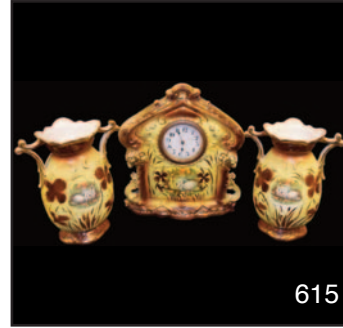
601



604



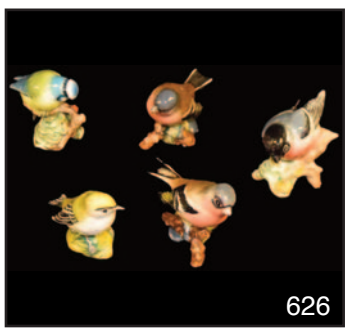
610



615



620



626



629



635



636



637



647



651



655



668

mcafee



51 Main Street, Ballymoney, BT53 6AN, Tel: (028) 2766 7669