

mcafee



Ballymoney

Thursday 8th October @ 6.30pm

Conditions

1. The highest approved bidder shall be the purchaser. The Auctioneer reserves the right to refuse any bid, and should any dispute arise between two or more bidders, the lot or lots in dispute shall be put up again, or not, and resold at the discretion of the Auctioneer, or the auctioneer may declare the purchaser. The Auctioneer reserves the right to bid on behalf of the vendor up to and including any reserve price placed on any lot and to alter, divide, group or withdraw any lot or lots either before or at any time during the sale.
2. The Auctioneer shall regulate the bidding and no bid shall be retracted.
3. Every purchaser shall give his name and place of abode, in default of which the Auctioneers shall have the power to resell at once, or afterwards as they may think fit.
4. Each bidder shall be supposed to have seen and to be thoroughly acquainted with the contents and conditions of the lot or lots on which he may bid, and no allowance whatsoever will be made for any faults, imperfections or errors of any description. The measurements and quantities described in the Catalogue are believed to be correct and must be taken as such. The purchaser being held to have satisfied himself as to measurements and quantities and other specifications in the Catalogue before bidding, neither will the Auctioneers or the Vendors be responsible for any lot or parts of any lot after the fall of the hammer, from which time all lots purchased are at the risk of the Purchaser.
5. The Auctioneers or the Vendors do not guarantee the measurements catalogued, or the correct description, genuineness or authenticity of any lot.
6. Each purchaser shall pay the whole amount of his purchase money (Auctioneer's Commission payable by purchaser) for all lots bought by him before any lot or lots can be removed and the whole amount due from each purchaser must be absolutely paid on each day of the sale and if not paid within such time, all moneys deposited in any part payment shall be absolutely forfeited and the Auctioneers will be at liberty to resell the lot or lots or any parts thereof remaining un-removed, by Public Sale or otherwise, without giving previous notice to the purchaser and any difference or deficiencies which may arise from, such re-sale, together with all expenses attending the same shall be made good by the purchaser.
7. The lots are sold with all faults and errors of description. No allowance can be made in any case, nor will the Vendors be answerable for any deficiencies in quantities or measurements when the purchaser,

his agent, carrier or man employed by him has removed any part of his lot or lots from the premises. All lots purchased must be removed absolutely in the time specified and if not so removed may be resold by the Vendors.

8. The Purchaser shall be answerable for all damages occasioned by any injury or other lots, by the removal of lots purchased by them, or to the premises and to repair or pay damages to the owners of same before the removal of their lots from the premises. In the event of any persons interested in the premises, claiming the whole or any part of a lot before its removal there from or if in the Auctioneer's opinion, the removal of any lot will endanger or permanently damage any building, the Auctioneer may, by written notice to the purchaser of such lot delivered to him or his Agent, or sent by post to his abode or place of business last known to the Auctioneers, rescind the sale of any such lot. The purchaser shall then be repaid his purchase money but shall not have or make any other claim.
9. Such lot or lots as are not cleared away agreeably to the condition of this sale, will not only be forfeited and may be dealt with under last condition, but the purchaser shall pay every expense attending the removal of any such lot or lots, and the costs of making good any damage occasioned by such removal. No lots shall be removed until the day following the last day of sale.
10. If any dispute or difference arises about any lot, or any other subject, the same shall be settled by the Auctioneers, with the approval of the Vendors, whose determination shall be final and binding on all parties concerned.
11. The Auctioneers nor the Vendors do not accept any liability for personal injuries of any description sustained or caused by any reason whatsoever by any person while on the premises or otherwise.
12. Purchasers will pay 15% Auctioneers Commission (minimum fee £1) + VAT on the commission.

**Bid online via [easyliveauction](http://easyliveauction.com) -
Please register early -
See terms & conditions.**

easyliveAuction.com





Ballymoney

Fine Furnishings



‘The Auction Rooms’ Main Street

Thursday 8th October @ 6.30pm

A very interesting collection of fine furnishings, clocks, paintings, collectibles, silver and jewellery.

Viewing Tuesday 6th and Wednesday 7th October 2.00 – 5.00 and 7.00 – 8.30pm and day of sale Thursday 8th October 2.30 – 6.00pm.
Social Distancing Rules apply and masks must be worn

Bids may be left prior to sale, telephone bids can also be arranged or view and bid online via

easyliveAuction.com



Telephone Number During Viewing & Sale
(028) 2766 7669 / 07860474956



1	A Royal Doulton Figurine 'Day Dreams'	39	A Royal Doulton Figurine 'The Piper'
2	A Royal Doulton Figurine 'Sweet and Twenty'	40	An Oil Painting 'Farmyard Friends' - Signed
3	A Royal Doulton 'Oliver Twist' Jug	41	A Very Good Collection of Noritake Plates and Bowls
4	An Early Clarice Cliff Bizarre Pattern Sugar Shaker	42	A Noritake Lidded Bowl, Noritake Two Handled Dish and a Cabinet Cup and Saucer
5	A Waterford Crystal Jug	43	A Sundry Lot of Belleek Penquin, Jug etc
6	A Crystal Bowl and a Waterford Crystal Sugar Shaker	44	An Oil Painting 'Belfast Castle' - A Calderwood
7	A Beswick Horse	45	A Very Nice Inlaid Mahogany Three Piece Upholstered Suite
8	A Beswick Horse	46	A Very Nice Pair of Villeroy and Boch Vases
9	A Beswick Horse	47	A Very Nice Shaped Front Slimline Console Table
10	A Framed Text 'Formation of the Corps of Amoured Sergeants'	48	A Good Set of Oak Open Bookshelves
11	A Good Three Piece Alcocks Fishing Rod	49	A Border Fine Art Figurine 'Starts First Time' and its presentation Box and Certificate
12	An Oil Painting 'The Marina, Coleraine' - Desmond Rainey	50	A Very Nice Pair of Walnut Framed Single Beds and Their Mattresses
13	A Nice Gilt Framed Egyptian Print 'A Land Ship'	51	A Blue Mountain Figurine of a Bison
14	A Table Lamp and Shade	52	A 1st Period Belleek Tumbler and a 2nd Period Belleek Lidded Salt
15	A Set of Six Waterford Crystal Sundae Dishes	53	An Ornamental Figurine of a Pig
16	A Set of Six Waterford Crystal Footed Glasses	54	A Nice Geobel 'Michaelangelo' Vase
17	A Set of Six Waterford Crystal Sundae Dishes	55	A French White Marble Clock Set
18	A Set of Seven Waterford Crystal Footed Glasses	56	A Georgian Mahogany Tantalus
19	A Set of Four Waterford Crystal Sundae Dishes	57	A Nice Pair of Heavy Gilt Framed Pictures 'Fowl Play'
20	A Set of Six Waterford Crystal Tumblers	58	A Large Watercolour '- R B Higgins
21	A Lot of Waterford and Other Pieces	59	A Limited Edition Print 'Still Life' - Glynn Boyd Harte
22	A Very Nice Doulton Burslem Overpot	60	A Very Nice Walnut Cased Double Weight Vienna Wall Clock
23	A Very Good Brass Topped Table, Folding Supports	61	A Set of Four Carved Framed Upholstered Chairs
24	A Watercolour 'Mulroy Bay' - George Farrell	62	A Very Heavy Lidded Tyrone Crystal Footed Dish
25	An Oil Painting 'Abstract' - Brian Ferran	63	A Mahogany Bracket Clock
26	An Oil Painting 'Aul Sam' - Bobbie Anderson	64	A Signed Print 'Landscape' - J H Craig
27	An Oil Painting 'Carlingford Lough' - W Tyrell	65	A Very Nice Slimline Side Hall Table, Two Drawers
28	A Very Good Parker Knoll Armchair	66	Two Prints 'Kellys Coalboats' - Frank McKelvey
29	An Unusual Nine Compartment Two Handled Tray	67	A Good Mahogany Mantle Shelf
30	A Good Stick Barometer	68	A Pair of Upholstered Tub Chairs
31	A Nice Wall Hanging	69	A Gilt Framed Print 'The Boyhood of Raleigh' - Sir John S Millias Bart
32	A Nice Wooden Sculpture 'Trio'	70	A Very Nice Inlaid Mahogany Cased Drop Dial Clock
33	An Oil Painting 'Harbour Scene' - Victor McCurry	71	A Large Bevelled Glass Wall Mirror
34	An Oil Painting 'A Winters Walk' - J C McDaid	72	A Very Nice Pair of Mahogany Framed Wall Mirrors
35	An Oil Painting 'Morning in the Mournes' - William Cunningham	73	A Nice Framed Set of Five Coloured Prints
36	A Pair of Noritake Vases		
37	A Royal Doulton Figurine 'The Master'		
38	A Royal Doulton Figurine 'Silks and Ribbons'		



3



4



5



8



16



17



18



22



28



30



31



32



35



36



40



46



49



50



55



56



58



60

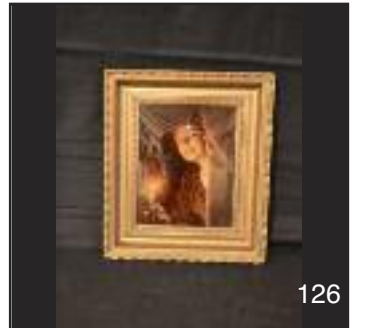
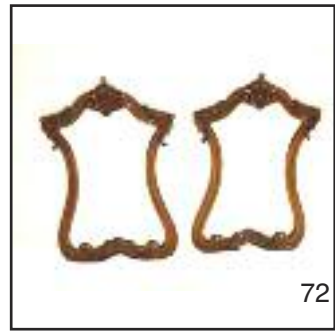


62



63

74	An Oak Occasional Table, Centre Pedestal	113	An Interesting Lot of Ceramics
75	A Nice Tall Chest of Five Drawers	114	A Large Brass Urn
76	A Limited Edition Border Fine Art Figurine 'Cut and Crated' with Certificate	115	A Nice Shaped Front Mahogany Chest of Four Drawers
77	A Watercolour 'Near Glenties, Co.Donegal' - Rowland Hill	116	A Small Inlaid Mahogany Occasional Table, Centre Pedestal
78	A Watercolour 'Copeland Isles, Co.Down' - Rowland Hill	117	An Oil Painting 'Nosey Cow' - Con Campbell
79	A Very Nice Mahogany Two Door Shelved Cabinet	118	An Oil Painting 'Co.Down Cottage' - Sally Tandy
80	A Very Large Limited Edition Border Fine Art Figurine 'Call of the Falcon' and Its certificate	119	A Fine Pair of Victorian Watercolours - Minton Drinkwater
81	A Mahogany Brass Inlaid Bracket Clock	120	An Early 20th Century Oak Canteen of Cutlery Table and Its Contents
82	An Oriental Decorated Plaque	121	A Nice Pair of Silhouettes
83	An Etching Mourn Mountains- R Cresswell Boak	122	A Crystal Decanter converted to a Table Lamp
84	A Gilt Framed Print 'Young Lady' - W Connor	123	A Mahogany Nest of Three Tables
85	A Noritake Table Centre Piece	124	A Waterford Crystal Mantle Clock and an Atlantis Candle Holder
86	A Noritake Dish	125	A Beswick Panda Pup
87	A Nice Decorated Two Handled Vase	126	A Nice Gilt Framed Cyrstoleum
88	A Nice Inlaid Mahogany Oval Occasional Table	127	A Bottle of Old Bushmills Millennium Single Barrell, Single Malt Whiskey
89	An Early Royal Doulton Figurine 'Rosina'	128	An Album of Old Photographs
90	An Early Pair of Royal Doulton Figurines 'Derby and Joan'	129	An Album of Sketches and Autographs
91	A Swarovski Crystal Mask in Original Box	130	A Nice Belleek Basket
92	A Swarovski Crystal Mask in Original Box	131	A Moorcroft Dish
93	A Swarovski Crystal Mask in Original Box	132	A Moorcroft Dish
94	A Royal Doulton Figurine 'Top of the Hill'	133	A Nice Silver Plate Photoframe
95	A Nice Crown Devon Tunstall Bowl	134	A Very Nice Gilt Framed Picture 'Still Life'
96	An Unusual Shaped Ruby Jug	135	A Nice Inlaid Mahogany Settee
97	A Capodimonte Figurine 'The Shoemaker'	136	A Good Lot of Three Cushions
98	A Four Piece Silver Plated Tea Service	137	A Nice Modern Torchere
99	A Silver Plated Sectional Cakestand and a Silver Plated Entr e Dish	138	A Very Nice Marble Topped Cherry Wood Platter
100	A Watercolour 'Near Teelim, Co.Donegal' - Maurice C Wilks	139	A Nice Modern Torchere
101	A Set of Six Mahogany Framed Dining Room Chairs including Two Carvers	140	A Very Nice Inlaid Mahogany Open Armchair
102	A Good Pair of Upholstered Wing Backed Armchairs	141	A Nice Carved Back Nursing Chair
103	A Pair of Upholstered Tub Chairs	142	A Good Mahogany Torchere
104	A Circular Chinese Rug	143	A Nice Closinne Vase
105	A Good Rectangular Floor Rug	144	A Lot of Three Good Cushions
106	A Finely Woven Rug	145	A Nice Turn Over Mahogany Tea Table
107	A Nice Gilt Framed Cyrstoleum	146	A Oil Painting 'Glenmoory' - Tommy Clyde
108	A Nice Gilt Framed Print 'Visiting' and Another	147	A Very Unusual Decorated Pottery Leaf Dish
109	A 1960's Carltonware 15 Piece Coffee Set	148	A Myott & Sons 'Rosemary' Pattern Tea and Dinner Service
110	A Nice Gilt Framed Bevelled Glass Wall Mirror	149	A Nice Austrain Sculpture of a Lady - Signed
111	A Nice Walnut Occasional Table, Centre Drawer	150	A Very Nice Pair of Inlaid Mahogany Sheild Back Open Armchairs
112	A Very Nice Pair of Onyx Based Table Lamps and Shades	151	A Nao Figurine 'Nightime'
		152	A Lladro Figurine 'The Clown'
		153	A Lladro Figurine 'Girl with Dog'
		154	A Lladro Figurine Dog'



155	A Lladro Figurine 'Girl with Geese'	198	An Unusual Mahogany Bentwood Hall Stand
156	A Lladro Figurine 'Fisherboy'	199	An Oil Painting on Panel
157	A Lladro Figurine 'Girl with Basket'	200	An Exceptionally Nice Shaped Front Side / Hall Table
158	A Lladro Figurine 'Girl with Chello'	201	An Oak Framed Tapestry
159	A Crown Devon Wall Plaque 'Champion'	202	A Watercolour 'Fairhead' - Jack Wilkinson
160	A Wemyss Pig	203	A Watercolour 'Agivey Bridge' - Jack Wilkinson
161	A Very Nice Decorated and Glazed Vase	204	A Pencil Drawing 'Castle' - M Murdock
162	A Pair of Oil Painting 'Birds' - W Houston	205	A Mahogany Double Pedestal Desk, Leather Inset
163	A Pair of Oil Paintings 'Birds' - W Houston	206	An Oak Framed Desk Chair
164	A Victorian Mahogany Vanity Box	207	A Waterford Crystal Table Lamp and Shade
165	A Cased Taxidermy of a Trout	208	A Set of Six Victorian Minton Cups and Saucers and Two Large Plates
166	A Fully Fitted Mother of Pearl Rosewood Sewing Box with key	209	A Large Carved Soapstone Figurine and Its Stool
167	A Very Nice Ruby Oil Lamp on Footed Plated Stand	210	A Large Royal Dux Figurine 'The Fish Seller'
168	A Silver Plated Oil Lamp	211	A Nice Parian Style Bust
169	A Stieff Teddy Bear	212	A Very Nice Pair of Oriental Vases
170	A Large Waterford Crystal Bowl	213	A Framed Oil Painting 'North Antrim Landscape' - Paula McKinney
171	A Nice Framed Icon	214	A Framed Oil Painting 'The Barrister' - Roy Wallace
172	A Nice Framed Small Picture	215	A Rare Pair of Crystal Lamp / Occasional Tables
173	A Small Coloured Etching and a Black and White Drawing	216	An Inlaid Mahogany Nest of Three Tables
174	An Interesting Collection of Crystal	217	A Very Nice Parian Style Figurine 'The Fruit Seller'
175	A Good Mahogany Breakfast Table, Centre Pedestal	218	A Very Good Brass Standard Lamp and Shade
176	A Set of Four Upholstered Mahogany Framed Dining Room Chairs	219	A Good Oval Walnut and Inlaid Coffee Table, Centre Pedestal
177	A Pair of Mahogany Bedside Cabinets	220	A Very Nice Royal Chelsea 'Goldren Rose' Teaset
178	A Slimline Mahogany Chest of Drawers	221	A Nice Floral Vase and a Nice French Decorated Comport
179	A Decorated Brass Planter	222	A Gilted Wall Bracket and a Brass Stool
180	A Good Bentwood Coatstand	223	A Very Nice Brass Double Candle Holder
181	A Gilt Framed Oval Sectional Wall Mirror	224	A Very Nice Pair of Brass Candle Sconces
182	An Oil Painting 'Ramelton', Donegal' - Wilson Gordon	225	An Inlaid Mahogany Open Armchair
183	A Very Nice Brass Framed Triple Mirror Firescreen	226	A Nice Collection of Silver Plate
184	A Framed Rare Calendar Dated January 1937 of the Abdicated King Edward	227	A Very Nice Tray Top Mahogany Table on Tripod Stand
185	An Inlaid Brass Nest of Four Tables	228	A Ruby Decanter and Two Ruby Tumblers
186	A Crystal Decanter Converted to a Table Lamp and Shade	229	A Nice Ruby Basket
187	A Nice Carved Mahogany Plantstand	230	A Very Nice Hammersley Teaset
188	An Inlaid Mahogany Open Armchair	231	A Three Piece Silver Plated Teaservice
189	An Inlaid Mahogany Nursing Chair	232	A Nice Mahogany Occasional Centre Table, Centre Pedestal
190	A Very Good Pair of Mahogany Hall Chairs	233	A Three Branch Figurine Based Table Lamp and Shade
191	A Small Mahogany Occasional Table, Two Drawers	234	A Pair of Oak Hall Chairs
192	A Nice Crystal Based Table Lamp and Shade		
193	A Nice Pair of Watercolours 'Flying Geese' - A Briscoe		
194	A Large Copper Two Handled Circular Pan		
195	A Large Circular Imari Charger and Its Stand		
196	A Nice Brass Bed Warmer		
197	A Nice Childs Open Armchair		



152



154



160



161



163



165



166



167



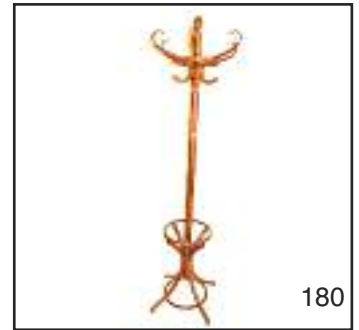
168



172



175



180



183



184



185



187



195



197



198



203



207



208



209



210

235	A Very Nice Lift Top Games / Sewing Table	270	A Galway Crystal Vase in its Presentation Box
236	A Good Overpot and Saucer	271	Two Gilted Picture Frames and Four Door Handle Surrounds
237	A Nice French Porcelain bowl and Four Similar Decorated Small Dishes	272	A Lot of Two Imari Plates and An Imari Bowl
238	An Early Silver Plated Tea Pot and Coffee Pot	273	A Good Rectangular Chinese Rug
239	A Parian Style Figurine of a Lady	274	A Parian Figurine of a Foal and Another of a Horse
240	A Very Unusual Mahogany and Gilted Metal Base Planter	275	A Good Gilted Metal Picture Stand
241	A Nice Collection of Silver Plate	276	A Nicely Framed Print 'The Hunt'
242	A Very Nice Mahogany Three Branch Cakestand	277	An Oil Painting 'Portnoo' - Aylmer Armstrong
243	Two Nice Quality Silver Plated Candleabra	278	A Pencil Sketch 'Ballymoney Town Clock' - Jack Wilkinson
244	A Nice Berger Back Occasional Chair	279	A Watercolour 'Church Spire' - Aylmer Armstrong
245	A Very Nice Royal Dux Figurine of a Parrot	280	An Oil Painting 'Tuning Up' - Noel Shaw
246	An Early Dresden Figurine of a Golden Pheasant	281	A Watercolour 'Winterscene' - G. M.C.
247	A Very Nice 21 Piece Teaset	282	A Decorated Sword and its Scabbard
248	A Most Unusual Brass Mounted Kingwood Small Drawer Unit	283	A Set of Four New Edinburgh Crystal Drinking Glasses
249	A Very Nice Carved Back Mahogany Open Armchair	284	A Nice Shaped Side Inlaid Mahogany Occasional Table
250	A Very Nice Inlaid Mahogany Shaped Back Settee	285	A Nice Slimline Walnut Chest of Six Drawers
251	A Very Nice Mahogany Cased Two Handled Tray on a Folding Base	286	A Noritake Dish, Three Others and Two Small Closoinne Dishes
252	A Very Nice Gilted Metal and Decorated Lidded Jar	287	A Pair of Piano Sconces
253	A Very Nice Gilted Metal and Decorated Figurine 'Birds'	288	A Mahogany Nest of Three Glass Topped Tables
254	A Very Nice Gilted and Metal Decorated Lidded Box	289	A Porcelain Figurine 'The Snow Queen' and Its Crystal Base
255	A Royal Worcester Figurine 'June'	290	A Very Nice Brass Pillar Oil Lamp, Converted to Electric
256	A Royal Worcester Figurine 'October'	291	A Black and White Etching ' Farm Carmoney' - Aylmer Armstrong
257	A Royal Worcester Figurine 'Mondays Child is Fair of Grace'	292	A Pair of Sketches 'Old Man' and 'Self Portrait' - Alymer Armstrong
258	A Royal Worcester Figurine 'August'	293	An Oil Painting 'The Old Farm' - Charles McAuley
259	A 'Mouseman' Ashtray	294	A Nice Inlaid Walnut Rectangular Occasional Table, Centre Drawer
260	A Very Nice 'Ivory' Hand Painted Mantle Clock	295	A Very Nice Royal Albert Hand Painted Teaset
261	An Unusual Jade Style Figurine 'Horses'	296	A Nest of Three Walnut Tables
262	An Unusual Jade Style Figurine 'Birds'	297	An Oil Painting 'The Darrell' - B Cutts
263	An Unusual Jade Style Figurine 'Birds'	298	A Pencil Drawing 'Head of a Girl' - Alymer Armstrong
264	A Rare 1st Edition 'My Lady of the Chimey Corner' Volume, Signed and inscribed to M/s Doherty	299	A Watercolour 'Lough Gill' - H Bailie
265	A Volume 'McCahans Local Histories' Signed Cahal Dalat	300	A Watercolour 'Muckish from Downings' - G W Morrison
266	A Volume 'Day of the Corncrake' - John Hewitt and Charles McAuley	301	A Lot of Three Hummel Figurines
267	A Volume 'Gastons Glynnnes' Signed By Roy Gaston	302	A Large Hummel Figurine
268	A Tyrone Crystal Figurine of a Church	303	A Large Double Hummel Figurine
269	A Tyrone Crystal Footed Bowl	304	A Nice Mirror Backed Fall Front Music Cabinet



212



215



218



220



227



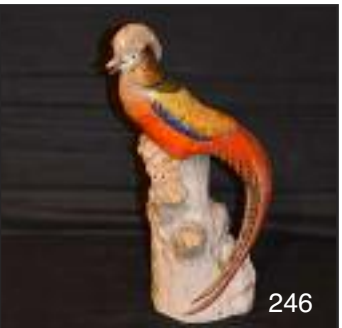
234



240



245



246



248



249



250



252



254



257



260



261



263



266



269



280



285

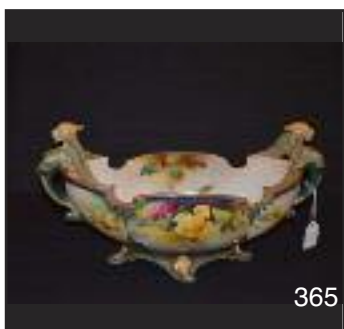


289



294

- | | | | |
|-----|--|-----|--|
| 305 | A Nice Mahogany Framed Upholstered Couch | 338 | A Nice 3rd Period Belleek Teapot |
| 306 | A Nice Pair of Mahogany Framed Upholstered Chairs | 339 | A Nice Figurine Topped Gilted Picture Frame |
| 307 | An Oil Painting 'Country Lane Near Lough Erne' - William Cunningham | 340 | A Limited Edition Belleek Centre Piece 'Greyhounds' |
| 308 | An Oil Painting 'Sea and Landscape' - Wallace Weir | 341 | A Pair of Belleek Figurines 'Basket Carriers' |
| 309 | An Oil Painting 'Hay Making' - Tom McGoldrick | 342 | A Good Selection of Early Porcelain |
| 310 | A Nice Sized Gilt Framed Wall Mirror | 343 | A Good Upholstered Oak Armchair |
| 311 | A Nice Pair of Inlaid Mahogany Chairs | 344 | An Inlaid Mahogany Fall Front Writing Bureau |
| 312 | An Oil Painting 'Wild Geese on The River Bann' - Irvine Templeton | 345 | An Oil Painting 'Evening by the Lagan' - William Cunningham |
| 313 | An Oil Painting 'Dunluce Castle' - Gerald Maguire | 346 | A Nice Pair of Royal Worcester Decorated Plates |
| 314 | A Nice Shaped Side Piano / Dressing Table Stool, Tapestry Seat | 347 | Two Nice Royal Worcester Cabinet Cups and Saucers |
| 315 | A Good Mahogany Turn Over Leaf Table, Centre Pedestal | 348 | A Nice Old Print 'Boy with Rabbit' |
| 316 | A Collection of Assorted Porcelain Pieces | 349 | An Early Hand Crafted Panel 'A Well Earned Break' |
| 317 | An Oil Painting 'The Hunter' - Owen Hayes | 350 | A Superb Pair of Mahogany Framed Mirror Backed Wall Brackets |
| 318 | An Oil Painting 'Moonlight Fishing' - John Manson | 351 | A Handcrafted Beadwork Panel |
| 319 | A Nice Mahogany Small Chest of Four Drawers | 352 | A Good Lot of Early Copper |
| 320 | A Set of Six Royal Crown Derby Breakfast Cups and Saucers | 353 | A Two Handled Lidded Pot and Two Brass Candle Sconces |
| 321 | A Very Nice Pair of Hand Painted Ewers | 354 | A Set of Black Metal and Brass Scales and Their Weights |
| 322 | A Tall Royal Worcester Figurine Vase | 355 | A Good Wingbacked Armchair |
| 323 | A Nice Pair of Gilted Metal Picture Frames | 356 | An Inlaid Mahogany Sutherland Table |
| 324 | A Very Nice Sized Circular Breakfast Table, Carved Legs, Paw Feet | 357 | A Large Gilt Framed Oval Portrait of a Distinguished Gent |
| 325 | A Very Fine and Glazed Decorated Jardinere on Stand | 358 | A Nice Sized Mahogany Four Drawer Chest with Dressing Slide |
| 326 | A Rectangular Mahogany Occasional Table | 359 | A Nice Sized Shield Back Mahogany Dressing Mirror |
| 327 | A Nice Pair of Watercolours 'River Scene' - George Trevor | 360 | A Good Oak Butlers Tray and Stand |
| 328 | A Watercolour 'Early Crocus' - Rhonda Paisley | 361 | A Mahogany Circular Table on Centre Pedestal |
| 329 | A Good Upholstered Mahogany Framed Open Armchair | 362 | A Royal Worcester Figurine 'The Parakeet' |
| 330 | A Large Oil Painting 'Evening Light' - Hugh McIlfratrick | 363 | A Royal Worcester Hand Painted and Gilted Vase 'Flowers' |
| 331 | An Early Dog Handled Jug and a Similar One | 364 | A Royal Worcester and Hand Painted Vase 'Flowers' |
| 332 | An Early Aynsley Teaset | 365 | A Very Nice Decorated , Two Handled Royal Worcester Bowl |
| 333 | A Mahogany Two Drawer Side Table, Gallery Back | 366 | A Very Nice Decorated Two Handled Royal Worcester Lidded Urn |
| 334 | A Pair of Hoof Wall Hangers | 367 | A Very Nice Decorated and Lidded Royal Worcester Bowl |
| 335 | An Inlaid Mahogany Occasional Square Top Table | 368 | A Royal Worcester Hand Painted Plate |
| 336 | A Nice Inlaid Mahogany Two Seat Settee | 369 | A Concave Mahogany Two Door Corner Cupboard |
| 337 | A 2nd Period Belleek Cabinet Cup and Saucer and Two Later Belleek Cabinet Cups and Saucers | 370 | A Nice Mahogany Slimline Chest of Six Drawers |
| | | 371 | A Collection of 1st, 2nd and 3rd Period Jugs and Bowls |



372	An Inlaid Mahogany Fall Front Coal Scuttle	406	A Parian Style Figurine and a Parian Style Figurine Vase
373	A Mahogany Screen, Pin Point Handcrafted Panel	407	A Three Piece Royal Crown Derby Tea Service
374	A 2nd Period Belleek Teapot and Other Belleek Pieces	407A	Two Royal Crown Derby Coffee Cans and Saucers
375	An Oil Painting 'Eric Clapton' - David Blair	408	A Porcelain Girl with Basket and Two Floral Ceramic Candle Holders
376	An Oil Painting 'Sailing Boats' - John Manson	409	A Silver Plated Egg Holder and A Tea Service on Tray
377	An Oil Painting 'Salmon Fishing Boat, Portstewart' - Aylmer Armstrong	410	A Good Pair of Mahogany Framed Armchairs
378	A Watercolour 'Portbradden' - G W Morrison	411	Two Gilted Metal Picture Frames
379	A Walnut Framed Upholstered Chair	412	A Cantonese Bowl and Tray
380	A Framed Oil Painting 'Hillside Abodes' - J P Rooney	413	A Masons Ironstone 'Penary' Bowl
381	A Framed Oil Painting 'Near Emerald Waters' - J P Rooney	414	A Cased Mahogany Nest of Three Tables
382	A Very Early Gents Carved Open Armchair	415	A Parian Figurine 'The Three Graces'
383	A Nice Mahogany Panelled Door Cupboard	416	A 2nd Period Belleek Teapot and Another
384	A Large Royal Dux Centrepiece 'Girl at Fountain'	417	A Pair of Parian Style Figurine Bookends
385	A Large Oil Painting 'Awaiting Their Return' - J P Rooney	418	A Parian Bust and Another Parian Style Figurine
386	A Small Oak Chest of Four Drawers	419	Two Parian Style Busts
387	A Six Piece Decorated Porcelain Dessert Set	420	A Parian Style Bust of a Young Lady
388	A Milk Glass Oil Lamp and Shade	421	A Parian Style Bust of a Young Lady and a Parian Style Figurine
389	Two Nice Brass Framed Picture Frames	422	A Nice Pair of Soapstone Figurines
390	A Very Nice Framed Minature of a Lady	423	A Soapstone Lidded Bowl
391	A Mahogany Wine Table	424	A Soapstone Figurine
392	A Tall Hand Painted Vase	425	A Large Soapstone Figurine
393	A Very Nice Inlaid Octagonal Occasional Table, Centre Pedestal	426	A Similar Soapstone Figurine
394	A Very Good Pair of Gilted Metal Wall Brackets	427	A Very Nice Limited Edition Porcelain Dish
395	An Oil Painting 'Grazing Peacefully' - Donal McNaughton	428	A Royal Crown Derby Plate
396	An Oil Painting 'Among the Flowers' - R Keefer	429	Four Pieces of Lattachino Glass
397	A Watercolour 'The Bishops House Downhill' - Jack Wilkinson	430	A Nice Bronze Figurine 'Camel and Rider' - Louis Albert Carvin
398	A Watercolour 'Balnamore Mill' - Jack Wilkinson	431	Two Interesting Pieces of Soapstone
399	A Nice Oval Copper Framed Wall Mirror	432	A Pair of Gilted Two Handled Vases
400	An Unusual Four Shelf Brass Mounted Whatnot	433	A German 'Thomas' Teaset
401	A Very Nice Circular Wall Plaque 'On Mothers Knee'	434	A Carved Mahogany Coffee Table, Leather Inset
402	A Watercolour 'Portbradden' - Aylmer Armstrong	435	A Very Nice Oval Glass Top Display Cabinet
403	A Watercolour 'Windy Day, Strandhead' - Aylmer Armstrong	436	A Very Nice Canteen of Bone Handled Fish Knives and Forks
404	Two Nice Cantonese Plates	437	A Very Nice Noritake Teasets
405	Two Nice Cantonese Plates	438	Two Royal Crown Derby Coffee Cans and Saucers
		439	A Nice Mahogany Occasional Table
		440	An Oil Painting 'Red Sauce' - Spillane
		441	A Pair of Prints 'Best Buddies' - Keith Glasgow
		442	A Very Nice Globe of the World On Stand
		443	A Mahogany Framed Firescreen, Painted Panel
		444	A Nice Wooden Childs Chair



382



383



384



385



390



397



400



403



407



410



414



415



417



435



436



442



445



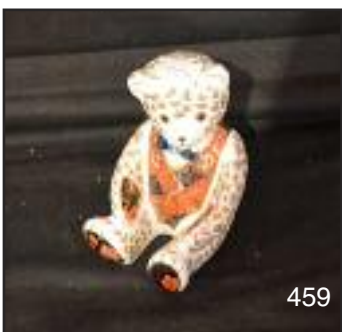
450



454



456



459



461



470



486

445	An Inlaid Mahogany Dressing Mirror on Stand	483	A Myott & Sons 'Ye Olde Willow' Dinner Service
446	A Nice Gilt Framed Oval Wall Mirror	484	A Very Nice Oval Walnut Occasional Table
447	A Good Lot of Linen	485	A Very Nice Set of Three Circular Christmas Plates
448	An American Style Rocking Chair	486	An Oil Painting 'Malin Homested, Donegal' - Manson Blair
449	A Console Table and Matching Mirror	487	An Oval Gilt Framed Wall Mirror
450	A Very Nice Shaped Mirror Backed Display Cabinet	488	A Collection of Ceramics
451	A Pencil Sketch 'Coleraine Coal Boat' - Aylmer Armstrong	489	A Wood and Son 'Kenya' Coffee Set
452	A Pencil Sketch 'Roof Tops Belfast' - Aylmer Armstrong	490	A Nice Oval Mahogany Framed Mirror with Brass Candle Sconces
453	A Pencil Sketch 'Alec Walton' - Aylmer Armstrong	491	A Nice Mahogany Dressing Mirror
454	A Very Nice Pair of Decorated Two Handled Vases	492	A Brass Bed Warmer, Turned Handle
455	A Silver Plated Picture Frame and Another	493	A Very Nice Six Piece Porcelain Dessert Set
456	Two Parian Style Figurines 'Birds'	494	A Box of Very Nice Candles
457	A Royal Crown Derby Figurine 'Bird'	495	A Very Nice Upholstered Bead Top Stool
458	A Royal Crown Derby Figurine 'Cat'	496	An Interesting Sundry Lot
459	A Royal Crown Derby Figurine 'Teddy Bear'	497	A Framed Oil Painting 'Portstewart' - William Cunningham
460	A Royal Crown Derby Figurine 'Dolphin'	498	A Framed Watercolour 'Scrabo, Co. Down' - Sam McLarnon
461	A Royal Crown Derby Figurine 'Drummer Boy'	499	An Oil Painting 'Torrhead' - Auther H Twells
462	A Royal Crown Derby Figurine 'Cat'	500	A Royal Dux Figurine 'The Basket Carrier'
463	A Royal Crown Derby Figurine 'Pheasant'	501	A Very Good Lot of Bone Handled Cutlery and Table Forks
464	A Royal Crown Derby Figurine 'Bird'	502	A Very Good Lot of Silver Plate Cutlery
465	A Very Nice Royal Worcester 'Beaufont' Dinner Server (never used)	503	A Very Good Lot of Silver Plate Cutlery
466	An Oil Painting 'Days Work Done' - Liam Reilly	504	A Lot of Silver Handled and Other Plated Cutlery
467	A Very Nice Oval Framed Bead Point Tapestry	505	A Good Circular Rug
468	A Good Mahogany Shaped Front Chest of Five Drawers	506	A Good Rectangular Rug
469	A Sundry Lot of Ceramics	507	A Good Rectangular Rug
470	An Oil Painting 'Awaiting their Lift' - Alan Beers	508	A Nice Set of Balance Scales and Weights
471	A Portfolio Watercolour 'Lichens on North Coast Basalt' - R G Sellar	509	A Nice Onyx Based Oil Lamp and Shade
472	A Wood Block 'Coast Road Victoriana' - R G Sellar	510	A Very Nice Pair of Belleek Figurines
473	A Pencil Sketch 'Near Coleraine' - Aylmer Armstrong	511	A Very Nice Pair of Belleek Figurines 'Basket Carriers'
474	A Nice Pair of Framed Crystoleums	512	A Horn Handled Masonic Walking Stick
475	A Watercolour 'The Old Dwelling' and Another 'Waterfall'	513	A Shaped Front Mahogany Side / Hall Table, Two Drawers
476	A Mahogany Framed Upholstered Chair	514	An Unusual Cast Metal Framed Barometer
477	A Nice Gilded Metal Wall Bracket	515	Six Folding Pen Knives
478	An Interesting Lot of Copper and Brassware	516	A Set of Five Commemorative Isle of Man Crowns
479	A Sundry Lot of Ceramics, Seven Pieces	517	Five Commemorative Coins
480	A Nice Slimline Chest of Five Drawers	518	A Lot of Coin Folders and a Quantity of 1967 1, 6d + 1 Pieces
481	A Lot of Three Nice Ceramic Plates 'Birds'	519	A Box of Brass Thruppences
482	A Good Wall Bracket and Two Pairs of Gilded Cherubs	520	A Gold 1/2 Sovereign 1925
		521	An 1887 Victorian Crown
		522	A 1900 Victorian Crown
		523	A Cased Set of Silver Plated Servers and A Pair of Asparagus Tongs
		524	A Set of Six Silver Napkin Rings



491



493



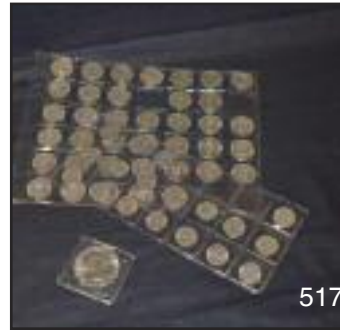
500



501



510



517



521



525



530



534



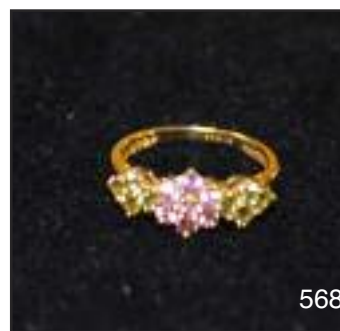
540



560



563



568



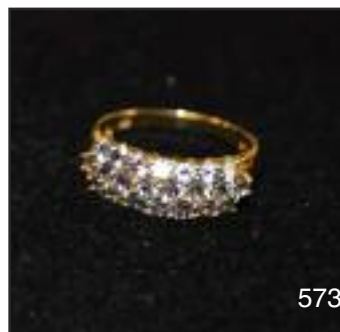
569



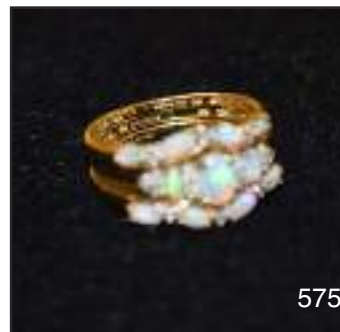
570



571



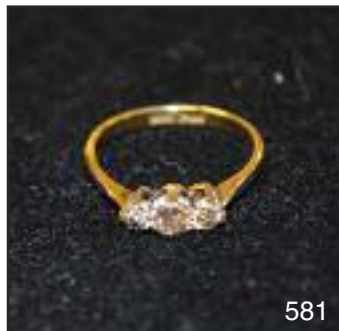
573



575



580



581



582



583



584

- 525 A Superb Very Important Minature by Emily Hayward Drayton Taylor 1894 in a Very Heavy Solid Silver Frame
- 526 A Silver Picture Frame, Sheffield 1990
- 527 A Silver Vase, London 1900
- 528 A Cased Set of Six Silver Spoons, Sheffield 1915 and A Set of Silver Plated Tongs
- 529 A Silver Circular Photoframe, Birmingham 1921
- 530 A Nice Pair of Silver Candlesticks, Sheffield 1898
- 531 A Large Silver Topped Dressing Table Jar, Birmingham 1928
- 532 A Large Silver Topped Dressing Table Jar, Birmingham 1896
- 533 A Silver Top Cut Glass Box, Thomas Hayes and Sons, Birmingham 1901 and a Silver Plated Top Cut Glass Atomizer
- 534 A Nice Etched Glass, Silver Topped Perfume Bottle, Birmingham 1922
- 535 A Superb Heavy Silver Embossed Bowl London 1853 D&C Hands
- 536 A Silver Photoframe, Birmingham 1918
- 537 A Silver Photoframe, London 1987
- 538 A Silver Inkstand with Silver and Cut Glass Inkwell, Birmingham 1901
- 539 A Small Pair of Silver Dishes, Sheffield 1946
- 540 A Superb Pair of Large Silver Sauce Boats, London 1756
- 541 A Pair of Heavy Irish Silver Table Spoons, Dublin 1927, James Scott
- 542 A Silver Toast Rack, Birmingham 1935
- 543 A Silver Spectacle Holder, Birmingham 1975
- 544 A Pair of Bright Cut Serving Spoons, Dublin 1796
- 545 A Pair of Silver Condiments, Chester 1910
- 546 Two Pairs of Silver Sugar Tongs, Dublin 1828 and London 1800
- 547 A Silver Photoframe, Birmingham 1926
- 548 A Silver Photoframe, Birmingham 1918
- 549 A Silver Photoframe, Sheffield 1993
- 550 A Silver Photoframe, Birmingham 1926
- 551 A Silver Shell Dish, Birmingham 1906 and A Silver Dish, Birmingham 1900
- 552 A Silver Circular Dish, Birmingham 1904 and a Silver Topped Jar, Birmingham 1899
- 553 A Silver Topped Jar, Birmingham 1902, A Silver Spirit Label and A Silver Napkin Ring, Birmingham 1910 and London 1992
- 554 A Silver Napking Ring, Birmingham 1908 and a Silver Pill Box, Birmingham 1902
- 555 A Heavy Silver Two Handled Bowl Sheffield, 1914
- 556 A Silver Fork, Birmingham 1912 and a Silver Napkin Ring 19088
- 557 A Silver Photo Frame, Birmingham 1920
- 558 A Silver Photo Frame, Sheffield 1983
- 559 A Very Nice Early Victorian Snuff Box, London 1855 Thomas Johnston
- 560 A Silver Pocket Watch, London 1870
- 561 A Very Nice Estee Lauder 'Dolpin Compact'
- 562 A Silver Cased Masonic Medal
- 563 A Five Piece Silver Dressing Table Set, Birmingham 1907
- 564 A Three Piece Silver Dressing Table Set, Birmingham 1931
- 565 A Two Piece Silver Mounted Tortoise Shell Dressing Table Set, London 1934
- 566 A Silver Backed Dressing Table Mirror, (needs mirror), Birmingham 1903
- 567 A 9ct Gold Diamond and Twist Ring
- 568 A 9ct Gold Dress Ring
- 569 A 9ct Gold Amethyst and Diamond Ring
- 570 A 9ct White Gold Three Diamond Ring
- 571 A Pair of 9ct Gold and Diamond Earrings
- 572 A Silver Golf Club Tie Pin / Brooch London 1987
- 573 A Nice 9ct Gold Diamond Twist Ring
- 574 A 9ct Gold and Torquoise Ring
- 575 A Trio of 9ct Gold and Diamond Rings
- 576 A Nice 9ct Gold Bloodstone Fob and a Gold Plated Fob
- 577 A Pair of United Nations Cufflinks
- 578 A Silver Necklace with Cross Attachment
- 579 A 9ct Gold and Diamond Pendant with Pearl Droplet and Chain
- 580 An 18ct Gold Blue Topaz and Diamond Ring
- 581 An 18ct Gold , Platinum and Diamond Ring
- 582 A 9ct Gold and Diamond Pendant with Chain and Matching Earrings
- 583 A 9ct Gold Gents Ring
- 584 A Nice Dress Brooch of a Bird
- 585 A Nice Cased Pair of Cufflinks
- 586 A Copper Snuff Box, Coin Inset



mafee



51 Main Street, Ballymoney, BT53 6AN, Tel: (028) 2766 7669